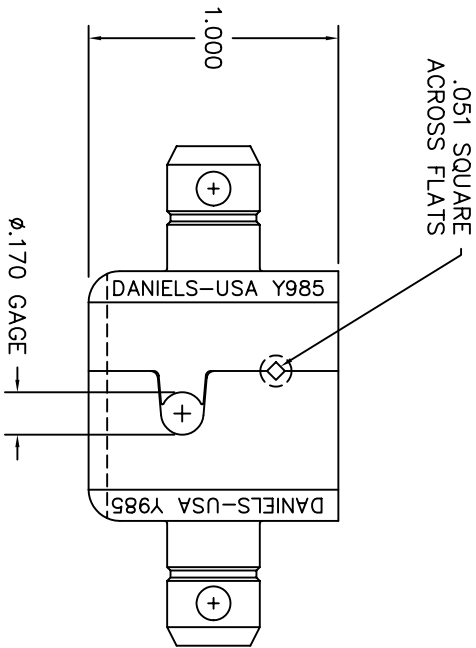
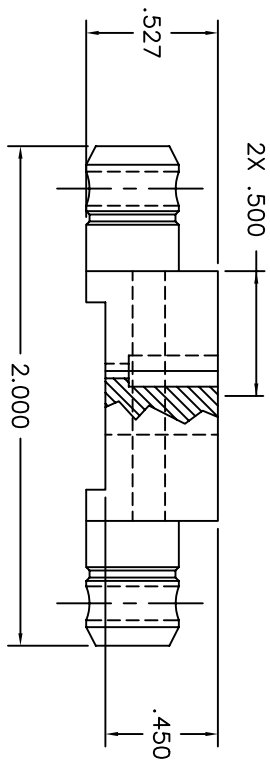


REVISIONS				
REV. NUMBER	E.C.O. NUMBER	DESCRIPTION	BY DATE	APP'D. DATE
1		ORIGINAL RELEASE	JML 6/5/03	RRR 6/5/03



**UNCONTROLLED DOCUMENT
WILL NOT BE UPDATED**

1. FUNCTIONAL EQUIVALENT TO AMP 69477-2.
NOTES:

RESTRICTED & CONFIDENTIAL CONFIDENTIAL PROPERTY OF DANIELS MANUFACTURING CORP. NOT TO BE DISCLOSED TO OTHERS, REPRODUCED OR USED FOR ANY OTHER PURPOSE, EXCEPT AS AUTHORIZED IN WRITING BY DANIELS MANUFACTURING. THIS DRAWING IS THE PROPERTY OF DANIELS MANUFACTURING CORP. NO COPIES OR REPRODUCTIONS ARE TO BE MADE WITHOUT THE WRITTEN PERMISSION OF DANIELS MANUFACTURING CORP. ON COMPLETION OF ORDER OR OTHER PURPOSE FOR WHICH LENT.		MATERIAL		ITEM		PART NO.		DESCRIPTION/REMARKS	
HEAT TREAT		FINISH		DRN.	J. JOYCE	DATE	6/5/03	DANIELS MANUFACTURING CORP. ORLANDO, FLORIDA GAGE 11691	
APP'D.		APP'D.		CHK'D.	RRR	DATE	6/5/03	DIE SET ENVELOPE DRAWING	
NOTE: THIS DRAWING IS AN OUTLINE DRAWING OF THE RESPECTIVE DIM PART NUMBER INDICATED IN THE DIMG PART NUMBER WITHOUT THE "-ENV" SUFFIX.		WHERE USED:		QTY.		SCALE	2X	CAD P/N	Y985-ENV
DO NOT SCALE DRAWING						POSTING		SHEET	1 OF 1
								REV.	1