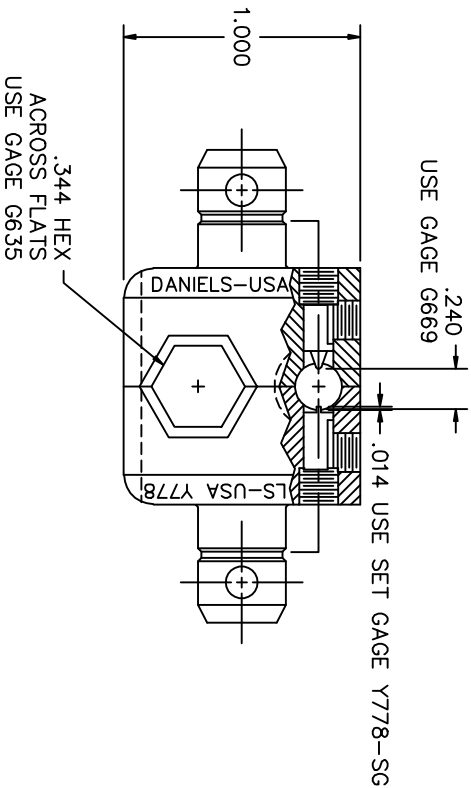
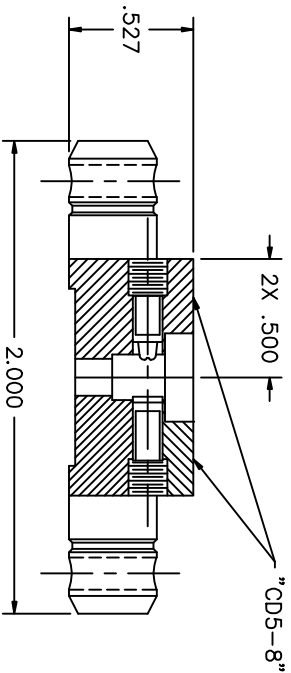



REVISIONS				
REV	ECN	DESCRIPTION	BY	APP'D
SYL	NUMBER		DATE	DATE
5		ADDED SETTING	ENF	RRR
			1-18-10	1-18-10



- TO SET DIE:
1. UNLOCK & BACK INDENTERS SLIGHTLY OUT OF THE CAVITY
  2. INSERT Y778-SG INTO HOLE FROM BACK SIDE OF DIE AS FAR AS IT WILL GO WITH THE SLOT ALIGNED WITH THE FLAT RECTANGULAR INDENTER
  3. ADJUST THE FLAT RECTANGULAR INDENTER UNTIL IT TOUCHES THE SET GAGE (PAY CLOSE ATTENTION TO LINE IT UP IN THE SLOT & DO NOT OVER TIGHTEN)
  4. ADJUST POINTED INDENTER UNTIL IT TOUCHES THE SET GAGE (DO NO OVER TIGHTEN)
  5. REMOVE Y778-SG
  6. VERIFY INDENTER GAGE WITH G669 AND ADJUST POINTED INDENTER IF NEEDED

UNCONTROLLED DOCUMENT  
WILL NOT BE UPDATED

RESTRICTED & CONFIDENTIAL  CONFIDENTIAL PROPERTY OF DANIELS MANUFACTURING CORP. NOT TO BE DISCLOSED TO OTHERS, REPRODUCED OR TRANSMITTED IN ANY FORM OR BY ANY MEANS, WITHOUT THE WRITTEN PERMISSION OF DANIELS MANUFACTURING CORP. ON COMPLETION OF ORDER OR FOR PURPOSE FOR WHICH LENT.	MATERIAL	ITEM	PART NO.	QTY.	DESCRIPTION/REMARKS				
		DRW. I. STANFILL	DATE 8-2-08		DANIELS MANUFACTURING CORP. ORLANDO, FLORIDA GAGE 11851				
		CHKD. DH	DATE 8-17-08						
		APP'D. AAM	DATE 9-4-08						
		NOTE:	WHERE USED:						
FINISH		THIS DRAWING IS AN OUTLINE DRAWING OF THE RESPECTIVE INDICATED ACTUAL DMC PART NUMBER. IT IS NOT TO BE USED FOR MANUFACTURING PURPOSES WITHOUT THE "-ENV" SUFFIX.		SCALE B 2X	Y778-ENV	1	1		
DO NOT SCALE DRAWING				POSTING	DMC. NO. Y778-ENV	REV. 5			