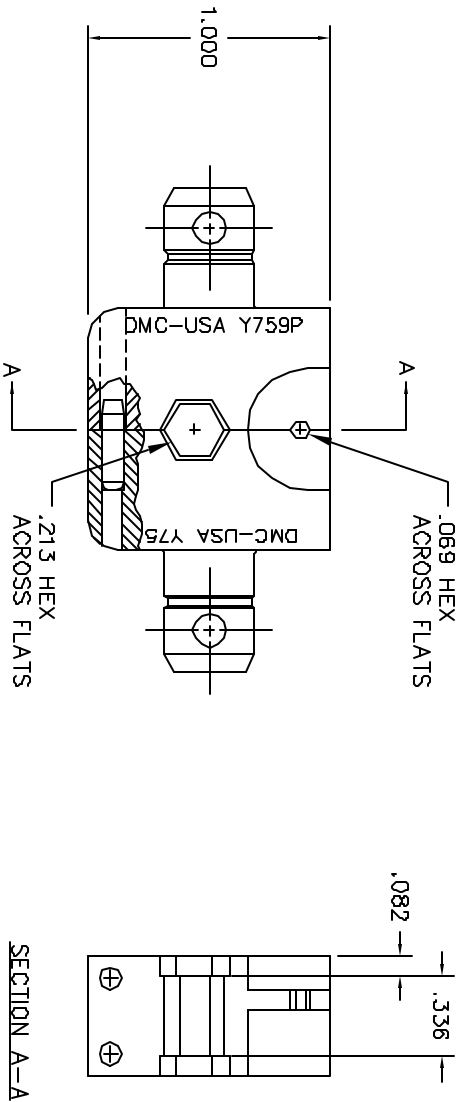
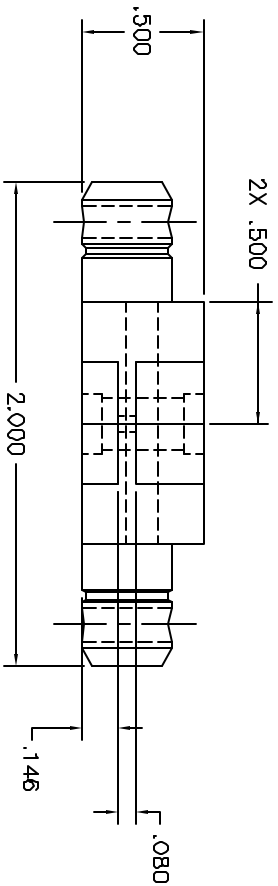


REVISIONS			
REV. STA.	DATE	DESCRIPTION	BY DATE
1	12-10-87	ORIGINAL RELEASE	12-87



**UNCONTROLLED DOCUMENT
WILL NOT BE UPDATED**

1. FUNCTIONAL EQUIVALENT TO KINGS KTH-2061.
NOTES:

RESTRICTED & CONFIDENTIAL		MATERIAL		ITEM		PART NO.		QTY.		DESCRIPTION/REMARKS	
CONFIDENTIAL PROPERTY OF DANIELS MANUFACTURING CORP. THIS DRAWING IS NOT TO BE REPRODUCED OR USED FOR ANY OTHER PURPOSE, EXCEPT AS AUTHORIZED IN WRITING BY DANIELS MANUFACTURING CORP. NO REPRODUCTION OR OTHER PURPOSE FOR WHICH LENT.		HEAT TREAT	FINISH	DRW. D:\DEPT\VA\DWG\12-87	DATE 12-87	DE	DATE	DATE	DATE	DATE	DATE
				APPROX. DATE	APPROX. DATE	APPROX. DATE	APPROX. DATE	APPROX. DATE	APPROX. DATE	APPROX. DATE	APPROX. DATE
DO NOT SCALE DRAWING				NOTE: THIS DRAWING IS AN OUTLINE DRAWING OF THE REFERRED DMC PART NUMBER. INDICATED DIMENSIONS AND PART NUMBER WITHIN THE "-ENV" SUFFIX.		WHERE USED B SIZE 2X SCALE B SIZE 2X SCALE		CAD P/N Y759P-ENV DMC. NO. Y759P-ENV		SHEET OF 1 REV. 1	