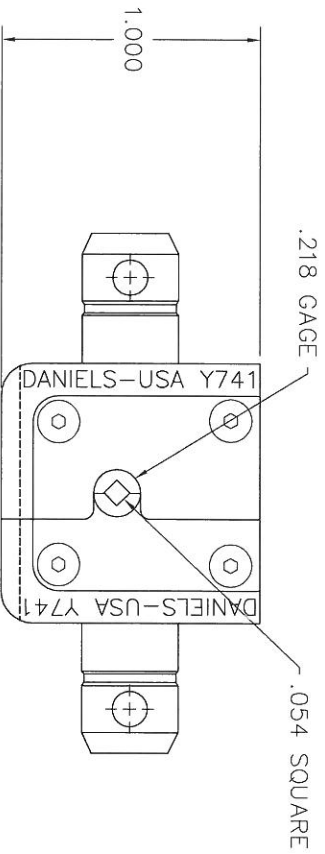
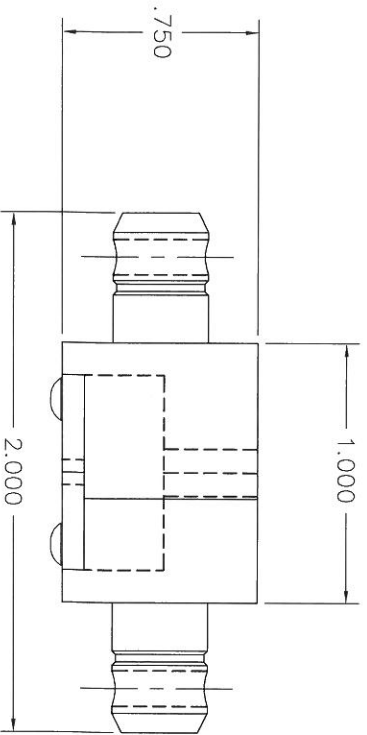


REVISIONS				
REV. SYL.	E.C.O. NUMBER	DESCRIPTION	BY DATE	APP'D DATE
1		ORIGINAL RELEASE	JS 12/10/85	DJR 12/13/85



**UNCONTROLLED DOCUMENT
WILL NOT BE UPDATED**

DIMENSIONS IN INCHES - UNLESS OTHERWISE SPECIFIED

1. FUNCTIONAL EQUIVALENT TO AMP EQUIVALENT 69429-1.

NOTES:

RESTRICTED & CONFIDENTIAL		MATERIAL		ITEM		PART NO.		QTY.		DESCRIPTION/REMARKS	
CONFIDENTIAL PROPERTY OF DANIELS MANUFACTURING CORP. THIS DRAWING IS NOT TO BE DISCLOSED TO OTHERS, REPRODUCED OR USED FOR ANY OTHER PURPOSE, EXCEPT AS AUTHORIZED IN WRITING, BY DANIELS MANUFACTURING. MUST BE RETURNED TO DANIELS MANUFACTURING CORP. ON COMPLETION OF ORDER OR OTHER PURPOSE FOR WHICH SENT.		HEAT TREAT		DRW	JS	DATE	12-10-85			DANIELS MANUFACTURING CORP. ORLANDO, FLORIDA GAGE 11851	
		FINISH		CHK'D.	BJ	DATE	12-11-85				
DO NOT SCALE DRAWING		NOTE:		APP'D.	DJR	DATE	12-13-85			DIE SET ENVELOPE DRAWING	
		THIS DRAWING IS AN OUTLINE DRAWING OF THE RESPECTIVE INDICATED ACTUAL DIM PART NUMBER WITHOUT THE "-ENV" SUFFIX.		WHERE USED:	SCALE	CAD P/N	SHEET	OF			
				POSTING	B	NTS	Y741-ENV	1	1	DMS. NO. Y741-ENV	
										REV. 1	