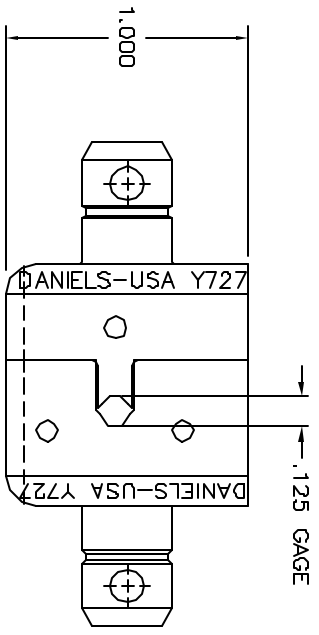
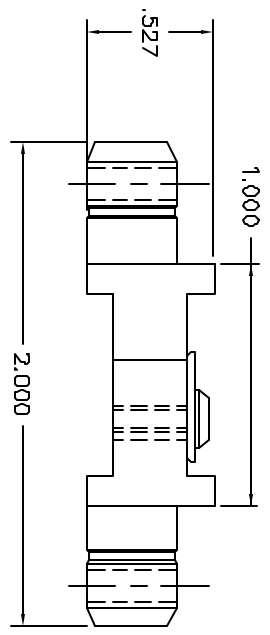


| REVISIONS | | | | |
|-----------|-------------|------------------|------------|-------------|
| REV. | EQCA NUMBER | DESCRIPTION | BY DATE | APP'D DATE |
| 1 | | ORIGINAL RELEASE | AM 8/17/08 | RRR 8/17/08 |



**UNCONTROLLED DOCUMENT
WILL NOT BE UPDATED**

1. AMP EQUIVALENT 45061-3.
NOTES:

| | | | | | | | | | | | |
|--|--|------------|--|---|--|-------------------------|--|--------------------------|--|---|--|
| RESTRICTED & CONFIDENTIAL CONFIDENTIAL PROPERTY OF DANIELS MANUFACTURING CORP. NOT TO BE REPRODUCED OR TRANSMITTED IN ANY FORM OR BY ANY MEANS, ELECTRONIC OR MECHANICAL, INCLUDING PHOTOCOPYING, RECORDING, OR BY ANY INFORMATION STORAGE AND RETRIEVAL SYSTEM, WITHOUT PERMISSION IN WRITING BY DANIELS MANUFACTURING. MUST BE RETURNED TO DANIELS MANUFACTURING CORP. ON COMPLETION OF WHICH LEFT. | | MATERIAL | | ITEM | | PART NO. | | QTY. | | DESCRIPTION/REMARKS | |
| | | HEAT TREAT | | DAN J. JOYCE DATE 8/17/08 | | RRR DATE 8/17/08 | | | | DANIELS MANUFACTURING CORP. ORLANDO, FLORIDA GAGE 11851 | |
| FINISH | | APPL. DATE | | NOTE: THIS DRAWING IS AN OUTLINE DRAWING OF THE RESPECTIVE DIE PART NUMBER INDICATED ACTUAL DIM PART NUMBER WILL BE THE "-ENV" SUFFIX. | | WHERE USED: SCALE 2X | | DAD P/N Y727-ENV | | B-SHEET 1 OF 1 | |
| DO NOT SCALE DRAWING | | | | | | | | DIE SET ENVELOPE DRAWING | | REV. 1 | |