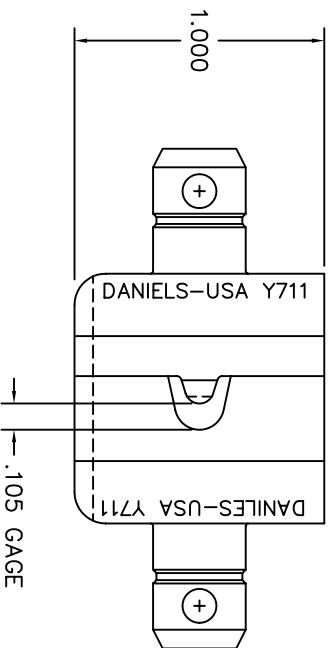
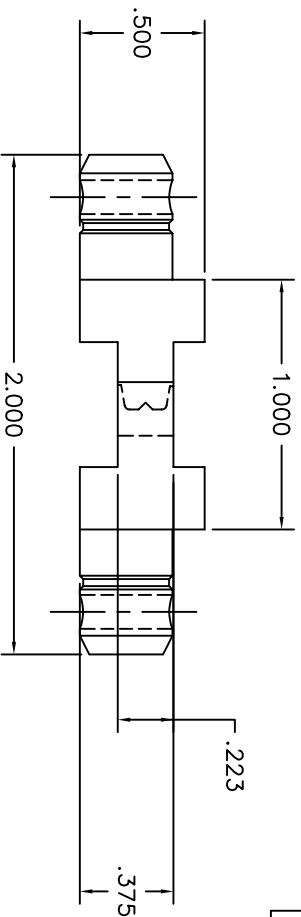


REVISIONS				
REV. NUMBER	E.C.O. NUMBER	DESCRIPTION	BY DATE	APP'D DATE
1		ORIGINAL RELEASE	MGS 12/11/84	KR 12/84



**UNCONTROLLED DOCUMENT  
WILL NOT BE UPDATED**

RESTRICTED & CONFIDENTIAL		MATERIAL		ITEM		PART NO.		QTY.		DESCRIPTION/REMARKS	
CONFIDENTIAL PROPERTY OF DANIELS MANUFACTURING CORP. NOT TO BE DISCLOSED TO OTHERS, REPRODUCED OR USED FOR ANY OTHER PURPOSE, EXCEPT AS AUTHORIZED IN WRITING BY DANIELS MANUFACTURING CORP. ON COMPLETION OF ORDER OR OTHER PURPOSE FOR WHICH LENT.		HEAT TREAT		DRN.	MGS	12/11/84				<b>Daniel's</b> DANIELS MANUFACTURING CORP. ORLANDO, FLORIDA CASE 11851	
		FINISH		CHK'D.	BG	12/12/84					
DO NOT SCALE DRAWING		NOTE:		APP'D.	KR	12/12/84				THIS DRAWING IS AN OUTLINE DRAWING OF THE RESPECTIVE DIE PART NUMBER IS DRAWING PART NUMBER WITHOUT THE "-ENV" SUFFIX.	
		WHERE USED:		APP'D.							
		TITLE		SCALE		CAD P/N		SHEET		REV.	
		ENVELOPE DRAWING		2X		Y711-ENV		1 OF 1		1	