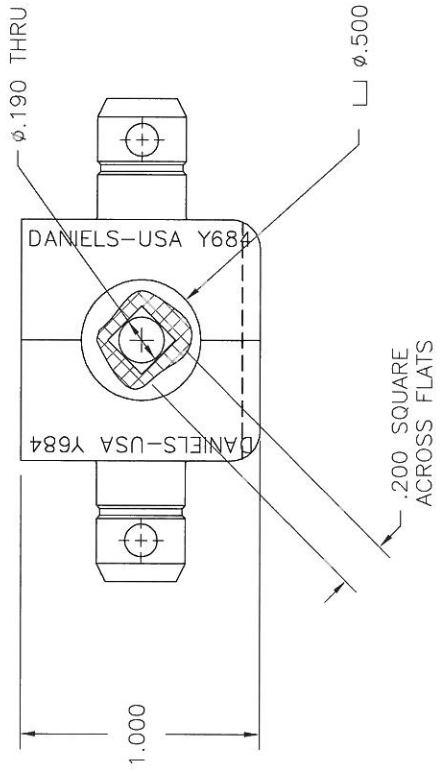
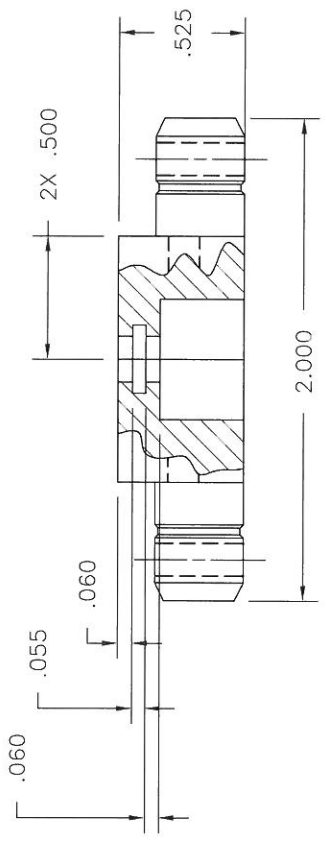


REV. SYM.		E.C.O. NUMBER	DESCRIPTION	BY DATE	APP'D DATE
1			ORIGINAL RELEASE	DH 1/21/88 JS 1/21/88	

REVISIONS

**UNCONTROLLED DOCUMENT
WILL NOT BE UPDATED**
DIMENSIONS IN INCHES - UNLESS OTHERWISE SPECIFIED



RESTRICTED & CONFIDENTIAL		MATERIAL		ITEM		PART NO.		QTY.		DESCRIPTION/REMARKS					
CONFIDENTIAL PROPERTY OF DANIELS MANUFACTURING CORP. NOT TO BE DISCLOSED TO OTHERS. REPRODUCED OR USED FOR ANY OTHER PURPOSE, EXCEPT AS AUTHORIZED IN WRITING BY DANIELS MANUFACTURING CORP. MUST BE RETURNED TO DANIELS MANUFACTURING CORP. ON COMPLETION OF ORDER OR OTHER PURPOSE FOR WHICH LENT.		HEAT TREAT		DRG. DATE 1/21/88 CHKD. JS 1/21/88 APP'D. AAM 1/21/88 APP'D. DATE 1/21/88		DATE 1/21/88 DATE 1/21/88 DATE 1/21/88 DATE 1/21/88		SIZE B SCALE 2X POSTING		DANIELS MANUFACTURING CORP. OPAUCHA, FLORIDA CAGE 11651					
												FINISH		TITLE DIE SET ENVELOPE DRAWING	
												DO NOT SCALE DRAWING		WHERE USED: DMC PART NUMBER Y684-ENV ACTUAL DMC PART NUMBER IS DRAWING NUMBER WITHOUT THE -ENV SUFFIX.	
												1. FOR CRIMP RING: NEXUS P/N MP-101-4		SUPERSEDES Y684-ENV DWG. NO. Y684-ENV	
										SHEET 1 OF 1 REV. 1					

1. FOR CRIMP RING: NEXUS P/N MP-101-4

NOTES: