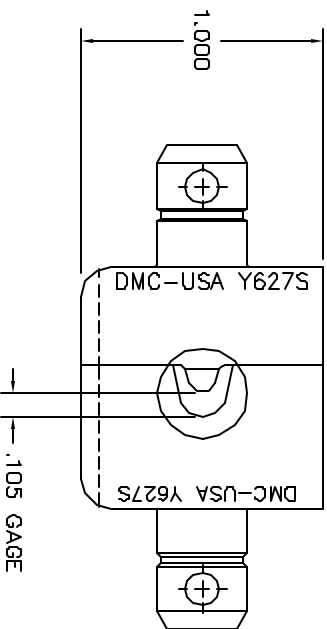
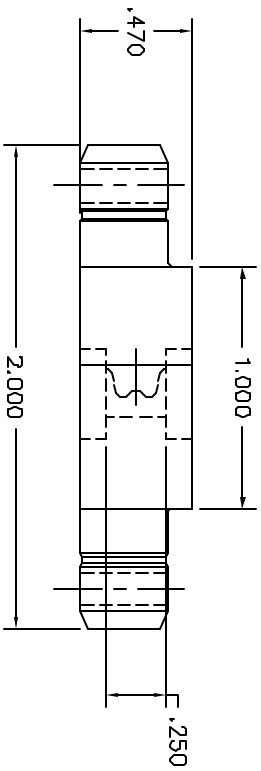


REVISIONS				
REV.	EQCA NUMBER	DESCRIPTION	BY DATE	APP'D DATE
1		ORIGINAL RELEASE	JM/1/20/03	1/20/03



**UNCONTROLLED DOCUMENT  
WILL NOT BE UPDATED**

RESTRICTED & CONFIDENTIAL		MATERIAL		ITEM		PART NO.		QTY.		DESCRIPTION/REMARKS			
CONFIDENTIAL PROPERTY OF DANIELS MANUFACTURING CORP. NOT TO BE REPRODUCED OR TRANSMITTED IN ANY FORM OR BY ANY MEANS, ELECTRONIC OR MECHANICAL, INCLUDING PHOTOCOPYING, RECORDING, OR BY ANY INFORMATION STORAGE AND RETRIEVAL SYSTEM, WITHOUT THE WRITTEN PERMISSION OF DANIELS MANUFACTURING CORP. THIS DRAWING IS AN OUTLINE DRAWING OF THE RESPECTIVE DIE PART NUMBER INDICATED. ACTUAL DIM PART NUMBER WILL BE THE "-ENV" SUFFIX.		HEAT TREAT	FINISH	DRAWN BY	J. JOYCE	DATE	1/20/03	DATE	1/20/03	<b>DMC</b> DANIELS MANUFACTURING CORP. ORLANDO, FLORIDA GAGE 11851			
				APPROV. DATE								WHERE USED:	DWG P/N
DO NOT SCALE DRAWING				NOTE:		TITLE		SCALE		DIE SET		REV.	
				THIS DRAWING IS AN OUTLINE DRAWING OF THE RESPECTIVE DIE PART NUMBER INDICATED. ACTUAL DIM PART NUMBER WILL BE THE "-ENV" SUFFIX.		ENVELOPE DRAWING		2X		Y627S-ENV		1 OF 1	
										Y627S-ENV		1	