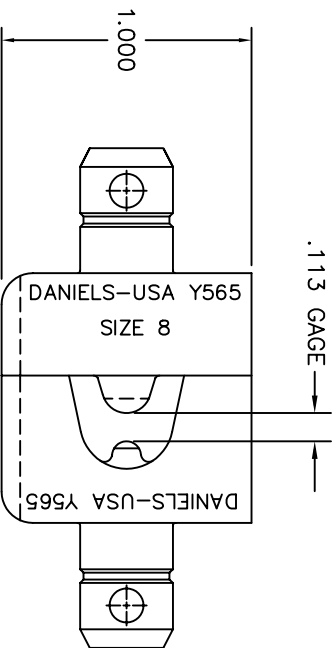
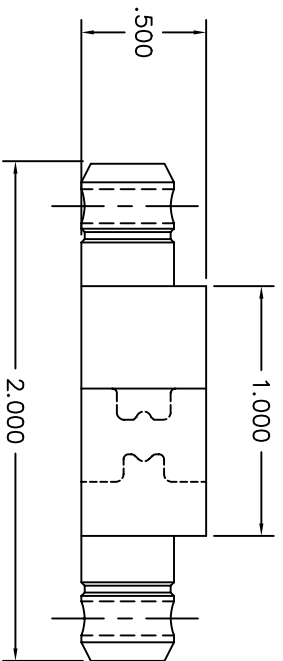


REVISIONS				
REV. NUMBER	E.C.O. NUMBER	DESCRIPTION	BY DATE	APP'D DATE
1		ORIGINAL RELEASE	AMZ 3/7/88	JS 3/88



**UNCONTROLLED DOCUMENT
WILL NOT BE UPDATED**

RESTRICTED & CONFIDENTIAL		MATERIAL		ITEM		PART NO.		QTY.		DESCRIPTION/REMARKS	
CONFIDENTIAL PROPERTY OF DANIELS MANUFACTURING CORP. NOT TO BE DISCLOSED TO OTHERS, REPRODUCED OR USED FOR ANY OTHER PURPOSE, EXCEPT AS AUTHORIZED IN WRITING BY DANIELS MANUFACTURING. THIS DRAWING IS THE PROPERTY OF DANIELS MANUFACTURING CORP. NO REPRODUCTION OR OTHER PURPOSE FOR WHICH LENT.		FINISH		DRN.	AMZ	DATE	3/7/88	DANIELS MANUFACTURING CORP. ORLANDO, FLORIDA CAGE 11691	1	DIE SET ENVELOPE DRAWING	SHEET 1 OF 1
				CHK'D.	JS	DATE	3/8/88				
DO NOT SCALE DRAWING		HEAT TREAT		APP'D.	AMZ	DATE	3/8/88	WHERE USED:		CAD P/N	Y565-ENV
				APP'D.	AMM	DATE	3/8/88	SCALE	2X	DWG. NO.	Y565-ENV
NOTE: THIS DRAWING IS AN OUTLINE DRAWING OF THE RESPECTIVE DIM PART NUMBER INDICATED ABOVE THE DIMG PART NUMBER WITHOUT THE "-ENV" SUFFIX.											