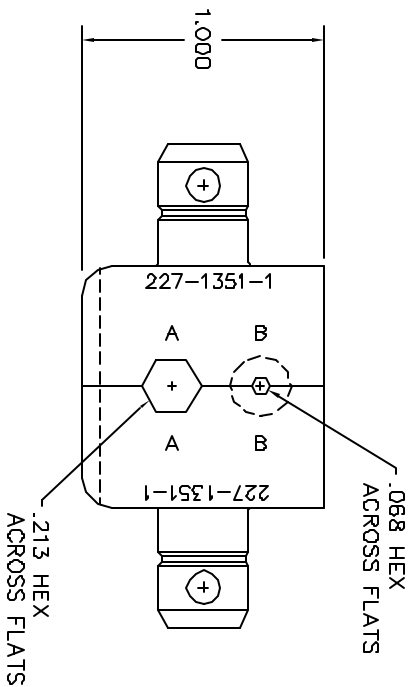
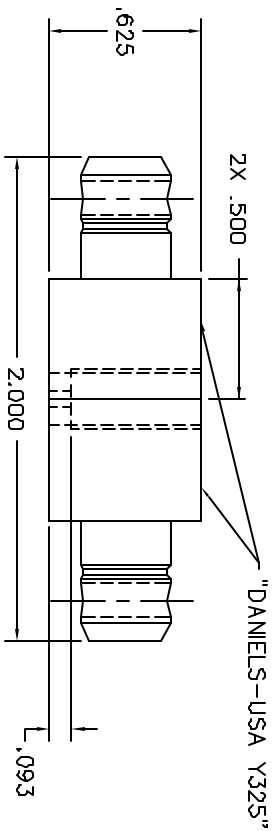


REVISIONS			
REV.	NO.	DESCRIPTION	DATE
1		ORIGINAL RELEASE	6/21/84



**UNCONTROLLED DOCUMENT
WILL NOT BE UPDATED**

1. AMPHENOL P/N 227-1351-1.

NOTES:

RESTRICTED & CONFIDENTIAL DANIELS MANUFACTURING CORP. NOT TO BE REPRODUCED OR TRANSMITTED IN ANY FORM OR BY ANY MEANS, ELECTRONIC OR MECHANICAL, INCLUDING PHOTOCOPYING, RECORDING, OR BY ANY INFORMATION STORAGE AND RETRIEVAL SYSTEM, WITHOUT PERMISSION IN WRITING FROM DANIELS MANUFACTURING CORP. THIS DRAWING IS AN OUTLINE DRAWING OF THE RESPECTIVE PARTS AND IS NOT TO BE USED FOR FABRICATING PARTS WITHOUT THE "ENV" SUFFIX.		MATERIAL		ITEM		PART NO.		QTY.		DESCRIPTION/REMARKS	
		HEAT TREAT		FINISH		DATE		DATE		DATE	
DO NOT SCALE DRAWING		FINISH		DATE		DATE		DATE		DATE	

DATE	8/24/84	DATE	8/24/84	DATE	8/24/84
CHK'D.	DVC	DATE	8/24/84	DATE	8/24/84
DE	DE	DATE	8/24/84	DATE	8/24/84

NOTE:		WHERE USED		CADD P/N		SHEET	
THIS DRAWING IS AN OUTLINE DRAWING OF THE RESPECTIVE PARTS AND IS NOT TO BE USED FOR FABRICATING PARTS WITHOUT THE "ENV" SUFFIX.		DIE SET		Y325-ENV		1 OF 1	
TITLE		ENVELOPE DRAWING		DWG. NO.		Y325-ENV	

DANIELS MANUFACTURING CORP.
ORLANDO, FLORIDA
CASE 11851