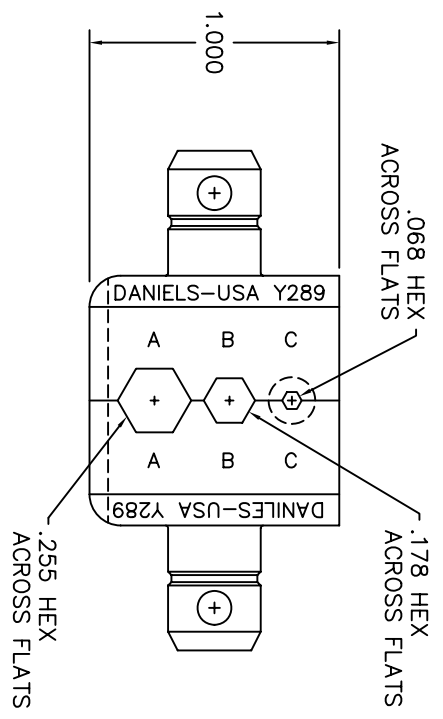
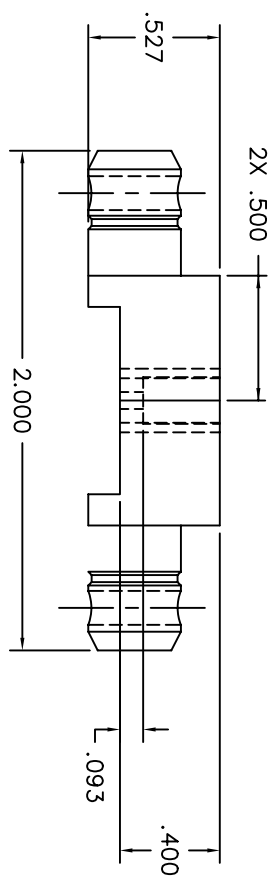


| REVISIONS |               |  |             |             |  |
|-----------|---------------|--|-------------|-------------|--|
| REV       | E.C.O. NUMBER | DESCRIPTION                            | BY DATE     | APP'D DATE  |  |
| 1         |               | ORIGINAL RELEASE                       | LLW 3/2/87  | DLC 3/3/87  |  |
| 2         |               | .255 HEX WAS .178<br>.178 HEX WAS .255 | ED 12/27/95 | DE 12/27/95 |  |



**UNCONTROLLED DOCUMENT  
WILL NOT BE UPDATED**

| RESTRICTED & CONFIDENTIAL  |  | MATERIAL |    | ITEM |        | PART NO. |        | QTY.  |       | DESCRIPTION/REMARKS |         |          |          |       |   |    |   |
|--|--|----------|----|------|--------|----------|--------|---|-------|---------------------|---------|----------|----------|-------|---|----|---|
| CONFIDENTIAL PROPERTY OF DANIELS MANUFACTURING CORP. NOT TO BE DISCLOSED TO OTHERS, REPRODUCED OR USED FOR ANY OTHER PURPOSE, EXCEPT AS AUTHORIZED IN WRITING BY DANIELS MANUFACTURING CORP. ON COMPLETION OF ORDER OR OTHER PURPOSE FOR WHICH LENT. |  | FINISH   |    | DRN. | LLW    | DATE     | 5/2/87 | THIS DRAWING IS AN OUTLINE DRAWING OF THE RESPECTIVE INDIC PART NUMBER AND PART NUMBER IS DRAWING NUMBER WITHOUT THE "-ENV" SUFFIX. |       | SIZE                | B       | CAD P/N  | Y289-ENV | SHEET | 1 | OF | 1 |
| HEAT TREAT   |  | CHK'D.   | DC | DATE | 5/9/87 | NOTE:    |        | WHERE USED:   | SCALE | 2X                  | POSTING | DWG. NO. | Y289-ENV | REV.  | 2 |    |   |
|  |  | APP'D.   |    | DATE |        | TITLE    |        | DIE SET   |       | ENVELOPE DRAWING    |         |          |          |       |   |    |   |

DO NOT SCALE DRAWING