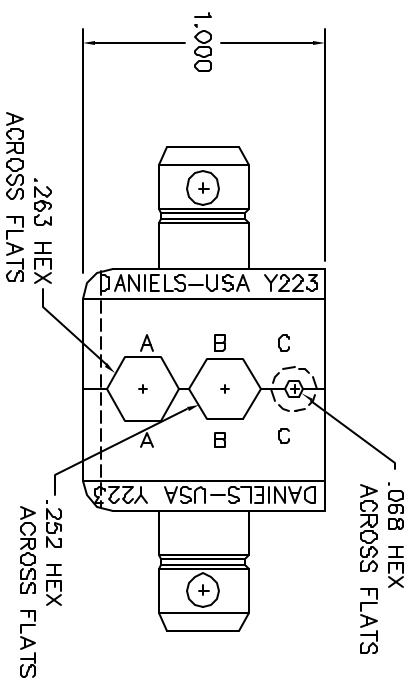
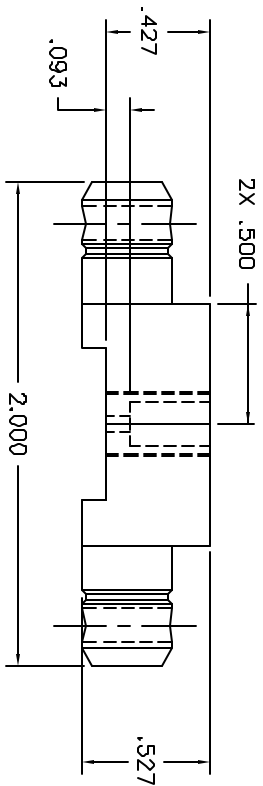


REV.	ECN#	DESCRIPTION	BY	DATE	APPR.	DATE
1		ORIGINAL RELEASE		12/20/04		12/20/04



**UNCONTROLLED DOCUMENT
WILL NOT BE UPDATED**

RESTRICTED & CONFIDENTIAL		MATERIAL		ITEM		PART NO.		QTY.		DESCRIPTION/REMARKS	
CONFIDENTIAL PROPERTY OF DANIELS MANUFACTURING CORP. NOT TO BE REPRODUCED OR TRANSMITTED IN ANY FORM OR BY ANY MEANS, ELECTRONIC OR MECHANICAL, INCLUDING PHOTOCOPYING, RECORDING, OR BY ANY INFORMATION STORAGE AND RETRIEVAL SYSTEM, WITHOUT THE WRITTEN PERMISSION OF DANIELS MANUFACTURING CORP.		HEAT TREAT		DRN J. JOYCE		16/20/04				Daniel's DANIELS MANUFACTURING CORP. ORLANDO, FLORIDA CASE 11851	
		FINISH		CHK'D. RRR		16/20/04					
DO NOT SCALE DRAWING				APPR. DATE		DATE		TITLE		THIS DRAWING IS AN OUTLINE DRAWING OF THE RESERVE DIE AND PART NUMBER INDICATED. ACTUAL DIMENSIONS AND PART NUMBER WITHOUT THE "-ENV" SUFFIX.	
				NOTE:		WHERE USED		DIE SET ENVELOPE DRAWING		CAD P/N: Y223-ENV DWS NO.: Y223-ENV SHEET 1 OF 1 REV 1	