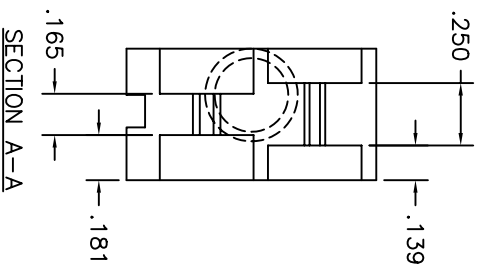
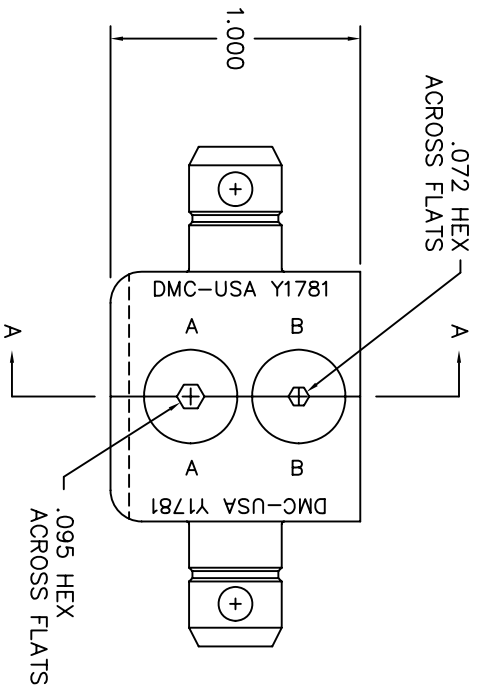
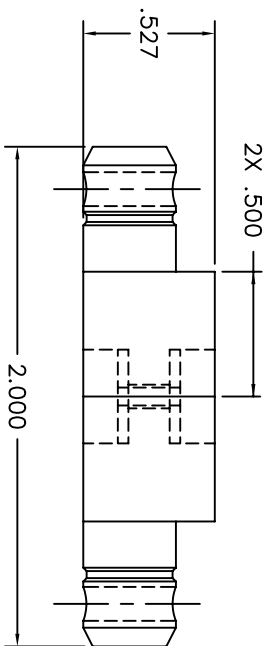


REVISIONS				
REV. SYM.	E.C.O. NUMBER	DESCRIPTION	BY DATE	APP'D DATE
1		ORIGINAL RELEASE	JMW 8/11/06	RRR 8/11/06



**UNCONTROLLED DOCUMENT
WILL NOT BE UPDATED**

RESTRICTED & CONFIDENTIAL		MATERIAL		ITEM		PART NO.		QTY.		DESCRIPTION/REMARKS	
CONFIDENTIAL PROPERTY OF DANIELS MANUFACTURING CORP. NOT TO BE DISCLOSED TO OTHERS, REPRODUCED OR USED FOR ANY OTHER PURPOSE, EXCEPT AS AUTHORIZED IN WRITING BY DANIELS MANUFACTURING CORP. ON COMPLETION OF ORDER OR OTHER PURPOSE FOR WHICH LENT.		HEAT TREAT		DRN. J. JOYCE	DATE 8/11/06	CHK'D. RRR	DATE 8/11/06	DMC DANIELS MANUFACTURING CORP. ORLANDO, FLORIDA CASE 11851			
		FINISH		APP'D.	DATE	APP'D.	DATE				
DO NOT SCALE DRAWING		NOTE:		THIS DRAWING IS AN OUTLINE DRAWING OF THE RESPECTIVE DMC PART NUMBER AND INDICATED PART NUMBER IS DRAWING NUMBER WITHOUT THE "-ENV" SUFFIX.				WHERE USED:		CAD P/N	SHEET 1 OF 1
		ENVELOPE DRAWING		SCALE		POSTING		DMC NO.		Y1781-ENV	