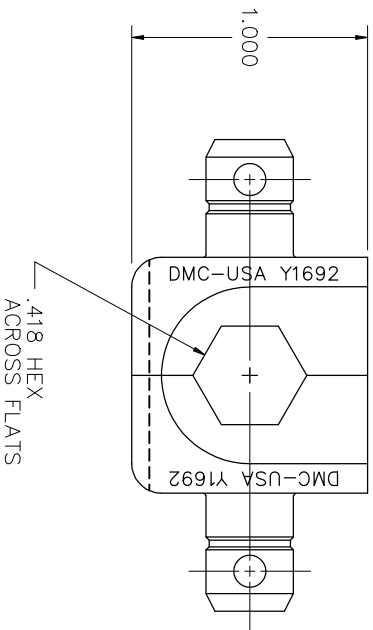
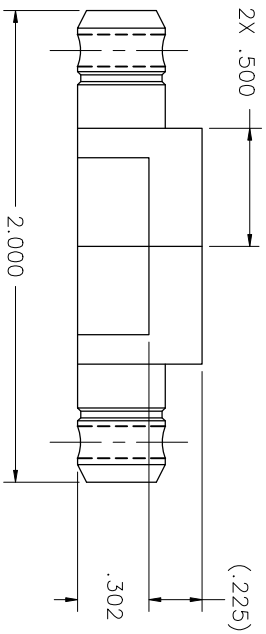


REVISIONS				
REV. NUMBER	E.C.O. NUMBER	DESCRIPTION	BY DATE	APP'D DATE
1		ORIGINAL RELEASE	12/19/08	



**UNCONTROLLED DOCUMENT  
WILL NOT BE UPDATED**

RESTRICTED & CONFIDENTIAL		MATERIAL		ITEM		PART NO.		QTY.		DESCRIPTION/REMARKS	
CONFIDENTIAL PROPERTY OF DANIELS MANUFACTURING CORP. NOT TO BE DISCLOSED TO OTHERS, REPRODUCED OR TRANSMITTED IN ANY FORM OR BY ANY MEANS, ELECTRONIC OR MECHANICAL, INCLUDING PHOTOCOPYING, RECORDING, OR BY ANY INFORMATION STORAGE AND RETRIEVAL SYSTEM, WITHOUT THE WRITTEN PERMISSION OF DANIELS MANUFACTURING CORP. MUST BE RETURNED TO DANIELS MANUFACTURING CORP. UPON COMPLETION OF ORDER PURPOSE FOR WHICH LENT.		FINISH		DATE		DATE		DATE		DATE	
HEAT TREAT		APP'D.		DATE		DATE		DATE		DATE	
NOTE:		THIS DRAWING IS AN OUTLINE DRAWING OF THE RESPECTIVE DMC PART NUMBER AND INDICATED PART NUMBER IS DRAWING NUMBER WITHOUT THE "-ENV" SUFFIX.		WHERE USED:		SIZE		SCALE		SHEET	
DO NOT SCALE DRAWING		DMC PART NUMBER		Y1692-ENV		NTS		CAD P/N		1 OF 1	
		INDICATED PART NUMBER IS DRAWING NUMBER WITHOUT THE "-ENV" SUFFIX.		Y1692-ENV		DMC NO.		Y1692-ENV		REV. 1	
		TITLE		DIE SET		ENVELOPE DRAWING					
		DMC		DANIELS MANUFACTURING CORP.		ORLANDO, FLORIDA		CAGE 11851			