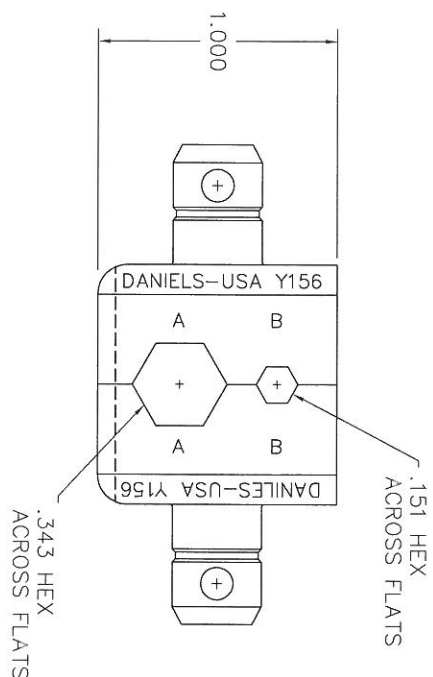
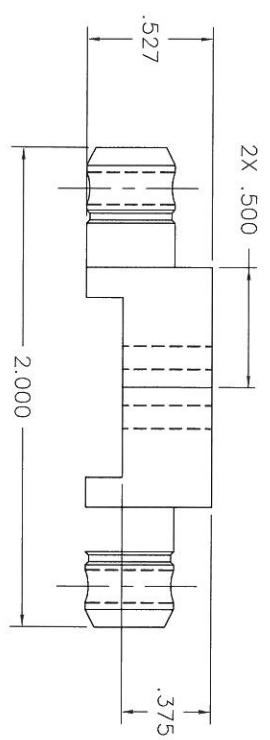


REVISIONS			
REV. SYM.	E.C.O. NUMBER	BY DATE	APP'D DATE
1		LV 12/12/89	TS 12/12/89



**UNCONTROLLED DOCUMENT
WILL NOT BE UPDATED
DIMENSIONS IN INCHES - UNLESS OTHERWISE SPECIFIED**

<p style="text-align: center;">RESTRICTED & CONFIDENTIAL</p> <p style="text-align: center;">CONFIDENTIAL PROPERTY OF DANIELS MANUFACTURING CORP. NOT TO BE DISCLOSED TO OTHERS, REPRODUCED OR TRANSMITTED IN ANY FORM OR BY ANY MEANS, ELECTRONIC OR MECHANICAL, INCLUDING PHOTOCOPYING, RECORDING, OR BY ANY INFORMATION STORAGE AND RETRIEVAL SYSTEM, WITHOUT THE WRITTEN PERMISSION OF DANIELS MANUFACTURING CORP. OR ITS AUTHORIZED REPRESENTATIVE.</p>		MATERIAL	
		FINISH	
HEAT TREAT		DO NOT SCALE DRAWING	
ITEM	PART NO.	QTY.	DESCRIPTION/REMARKS
DRN. LV	12/12/89		DANIELS MANUFACTURING CORP. ORLANDO, FLORIDA CASE 11851
CHK'D. TS	12/12/89		
APP'D. AAM	12/12/89		
<p style="text-align: center;">NOTE:</p> <p style="text-align: center;">THIS DRAWING IS AN OUTLINE DRAWING OF THE RESPECTIVE INDICATED ACTUAL DMC PART NUMBER WITHOUT THE "-ENV" SUFFIX.</p>			
WHERE USED:		CAD P/N	SHEET OF
SCALE 2/1		Y156-ENV	1 1
POSTING		DMC NO.	REV.
		Y156-ENV	1