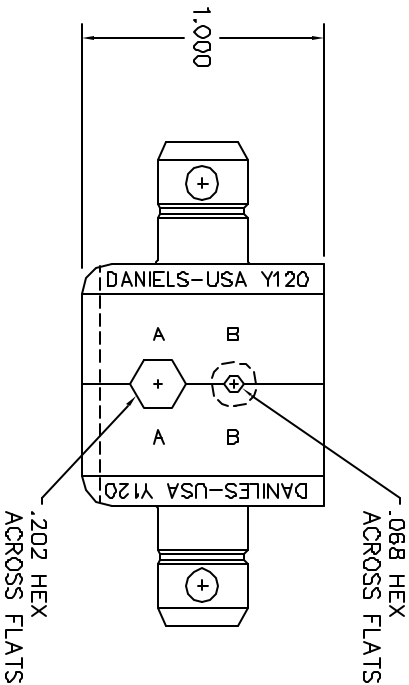
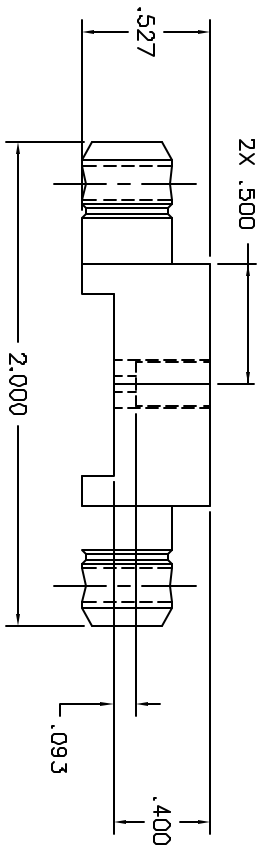


REVISIONS			
REV. NO.	ECNO. NUMBER	DESCRIPTION	BY DATE DATE
1		ORIGINAL RELEASE	6/19/87 6/19/87



**UNCONTROLLED DOCUMENT
WILL NOT BE UPDATED**

RESTRICTED & CONFIDENTIAL		MATERIAL		ITEM		PART NO.		QTY.		DESCRIPTION/REMARKS	
CONFIDENTIAL PROPERTY OF DANIELS MANUFACTURING CORP. NOT TO BE REPRODUCED OR TRANSMITTED IN ANY FORM OR BY ANY MEANS, ELECTRONIC OR MECHANICAL, INCLUDING PHOTOCOPYING, RECORDING, OR BY ANY INFORMATION STORAGE AND RETRIEVAL SYSTEM, WITHOUT THE WRITTEN PERMISSION OF DANIELS MANUFACTURING CORP. WHICH LEHNS.		HEAT TREAT		DIN 1.2345		KMS		DATE 6/18/87		Daniel's DANIELS MANUFACTURING CORP. DANIELS MANUFACTURING CORP. ORLANDO, FLORIDA CASE 11851	
		FINISH		APPL. EN DATE 6/18/87		MGS		DATE 6/18/87			
DO NOT SCALE DRAWING				THIS DRAWING IS AN OUTLINE DRAWING OF THE RESPECTIVE DIE SET PART NUMBER IS DRAWING NUMBER WITHOUT THE "-ENV" SUFFIX.		NOTE: WHERE USED SIZE SCALE B 2X PLOTTING		CAD P/N Y120-ENV SHEET 1 OF 1		DESCRIPTION/REMARKS DANIELS MANUFACTURING CORP. ORLANDO, FLORIDA CASE 11851 DIE SET ENVELOPE DRAWING	