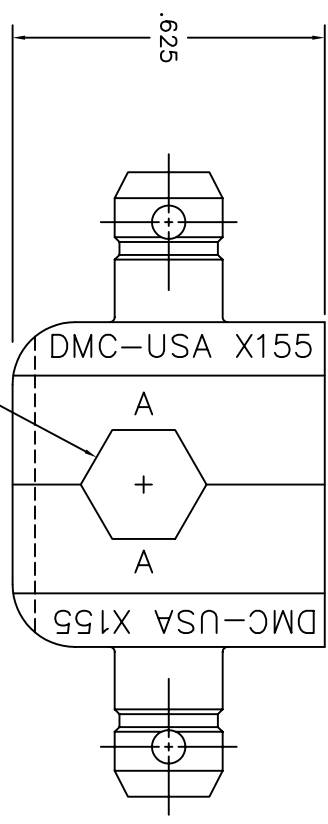
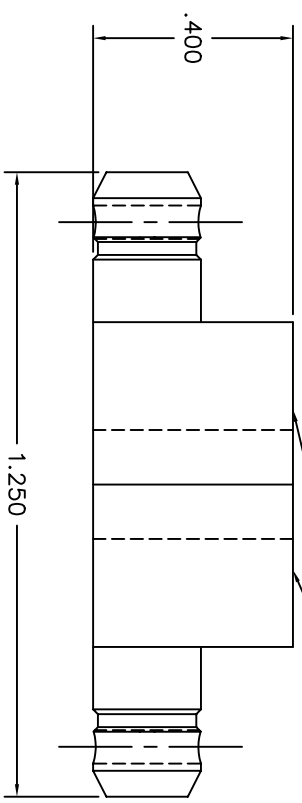


"M22520/10-23"
"CAGE 11851"



**UNCONTROLLED DOCUMENT
WILL NOT BE UPDATED**

REVISIONS				
REV. NUMBER	ECO. NUMBER	DESCRIPTION	BY DATE	APP'D DATE
1		ORIGINAL RELEASE	KMS 7/23/87	MGS 7/23/87

RESTRICTED & CONFIDENTIAL		COMPARTIAL PROPERTY OF DANIELS MANUFACTURING CORP. NOT TO BE DISCLOSED TO OTHERS. REPRODUCED OR USED FOR ANY OTHER PURPOSE, EXCEPT AS AUTHORIZED IN WRITING BY DANIELS MANUFACTURING.	
MATERIAL		MUST BE RETURNED TO DANIELS MANUFACTURING FOR CREDIT ON ORDER OR OTHER PURPOSE FOR WHICH LENT.	
HEAT TREAT		FINISH	
ITEM	PART NO.	QTY.	DESCRIPTION/REMARKS
DRW. KMS	DATE 7/23/87		DMC DANIELS MANUFACTURING CORP. ORLANDO, FLORIDA CAGE 11851
CHK'D. MGS	DATE 7/23/87		
APP'D. EN	DATE 7/23/87		
NOTE: THIS DRAWING IS AN OUTLINE DRAWING OF THE RESPECTIVE DMC PART NUMBER INDICATED. THE ACTUAL DMC PART NUMBER WITHOUT THE "-ENV" SUFFIX.			
WHERE USED:		CAD P/N	SHEET 1 OF 1
SIZE B	SCALE 2X	X155-ENV	REV. 1
POSTING		DMC NO. X155-ENV	

DO NOT SCALE DRAWING