

DIE CLOSURES		
SEL NO	Ø GO	Ø NO-GO
5	.069	.074
6	.076	.081
7	.086	.095
8	.100	.110

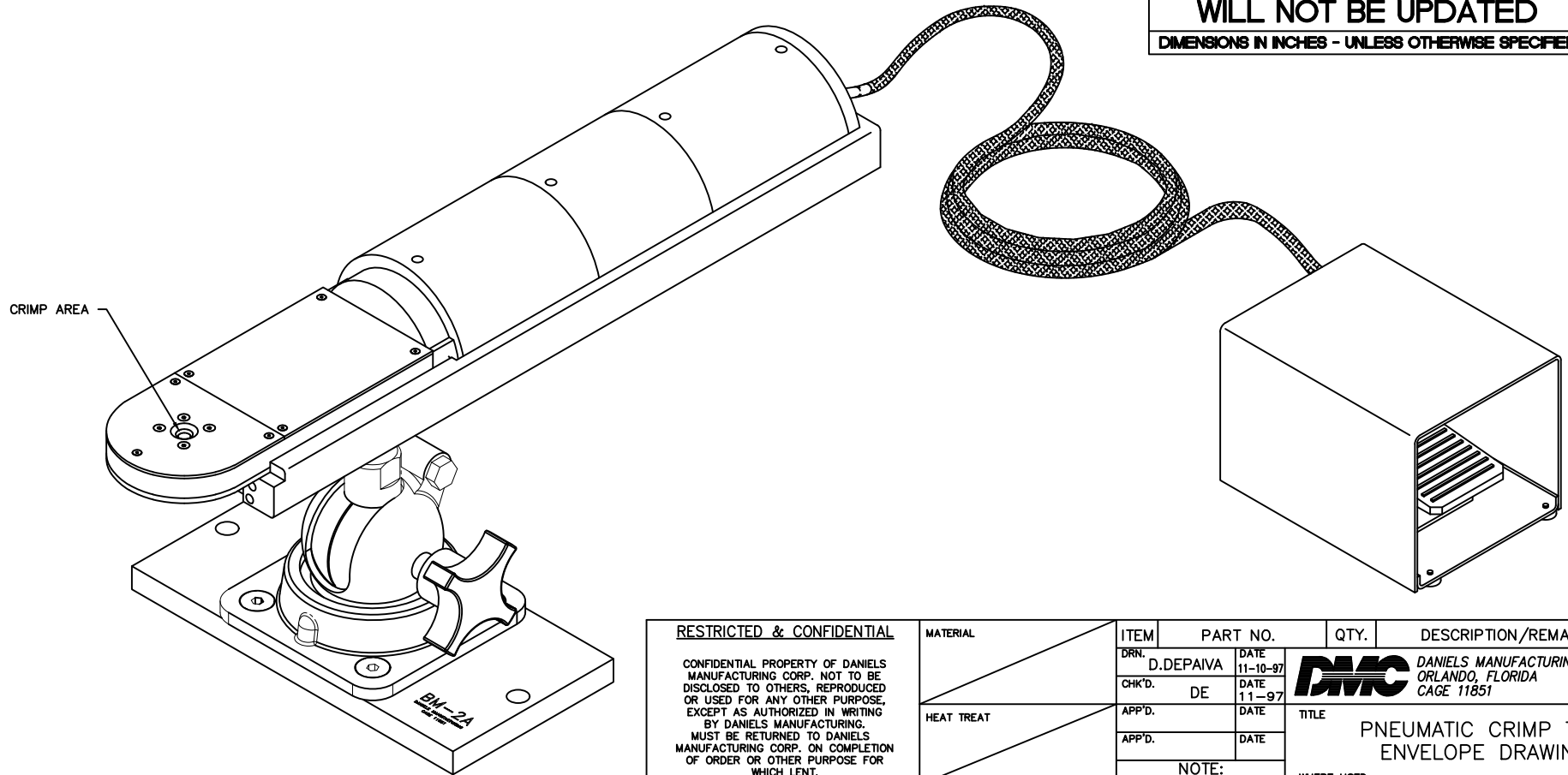
NOTES:

- DIMENSIONS:
 CRIMP TOOL: Ø 3.00 X 15.00
 CRIMP AREA: Ø .325 MAX
 BENCH MOUNT: 4.00 X 4.00 X 8.00
 FOOT PEDAL: 8 X 6 X 5.8
 HOSE: 9 FEET LONG

REVISIONS				
REV. SYM.	E.C.O. NUMBER	DESCRIPTION	BY DATE	APP'D DATE
1		ORIGINAL RELEASE	D.A.D. 11-10-97	DE 11-97
2		REVISED NOTE 2	JWJ 5-3-99	RRR 5-3-99
3		REVISED GAGE DIM'S	K. KOONS 5-9-00	RRR 5-9-00
4		REVISED PICTORIALY	K. KOONS 11-8-00	RRR 11-8-00
5		REPLACED WA10 WITH WA10A, AND REVISED PICTORIALY.	SAL 6-13-05	RRR 6-13-05
6	26317	REMOVED NOTE 2 "BENCH MOUNT IS OPTIONAL" REVISED PICTORIALY.	CKB 12-1-20	TD 12-3-20

**UNCONTROLLED DOCUMENT
WILL NOT BE UPDATED**

DIMENSIONS IN INCHES - UNLESS OTHERWISE SPECIFIED



RESTRICTED & CONFIDENTIAL		MATERIAL	ITEM	PART NO.	QTY.	DESCRIPTION/REMARKS
CONFIDENTIAL PROPERTY OF DANIELS MANUFACTURING CORP. NOT TO BE DISCLOSED TO OTHERS, REPRODUCED OR USED FOR ANY OTHER PURPOSE, EXCEPT AS AUTHORIZED IN WRITING BY DANIELS MANUFACTURING. MUST BE RETURNED TO DANIELS MANUFACTURING CORP. ON COMPLETION OF ORDER OR OTHER PURPOSE FOR WHICH LENT. DO NOT SCALE DRAWING	HEAT TREAT	DRN. D.DEPAIVA DATE 11-10-97	CHK'D. DE DATE 11-97	APP'D. DATE	APP'D. DATE	DMC DANIELS MANUFACTURING CORP. ORLANDO, FLORIDA CAGE 11851 TITLE PNEUMATIC CRIMP TOOL ENVELOPE DRAWING
	FINISH	NOTE: THIS DRAWING IS AN OUTLINE DRAWING OF THE RESPECTIVE DMC PART NUMBER INDICATED. ACTUAL DMC PART NUMBER IS DRAWING NUMBER WITHOUT THE "-ENV" SUFFIX.		WHERE USED:		
		SIZE B	SCALE NTS	CAD P/N WA27-309-EP-ENV	SHEET 1	OF 1
		POSTING	DWG. NO. WA27-309-EP-ENV	REV. 6		