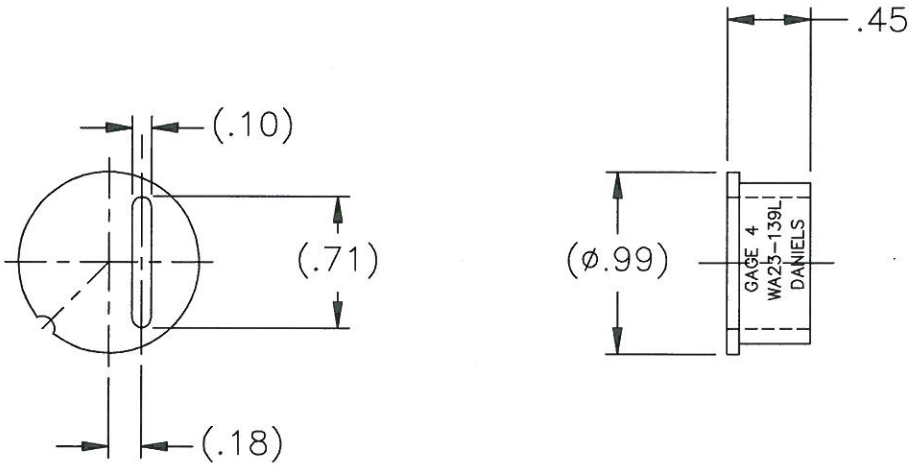


UNCONTROLLED DOCUMENT  
WILL NOT BE UPDATED



**DANIELS MANUFACTURING CORP.**  
526 Thorpe Road  
Orlando, Florida 32824

- 3. COLOR: PLATINUM
- 2. REF: 2024 ALUM.
- NOTES: 1. THIS IS AN AUTOCAD DRAWING, DO NOT CHANGE MANUALLY.

					THESE DRAWINGS, SPECIFICATIONS OR OTHER DATA ARE AND REMAIN, THE PROPERTY OF ASTRO TOOL CORP. AND MUST BE RETURNED UPON REQUEST. THEY CONTAIN INFORMATION OWNED AND/OR DEVELOPED BY ASTRO AT ITS OWN PRIVATE EXPENSE AND MAY NOT BE USED, DUPLICATED OR DISCLOSED TO OTHERS, IN WHOLE OR IN PART FOR DESIGN, MANUFACTURE OR PROCUREMENT WITHOUT THE WRITTEN PERMISSION OF ASTRO TOOL CORP. EACH AND EVERY TIME.	SCALE: N.T.S.	UNLESS OTHERWISE SPECIFIED: DECIMALS: .XXX ± .005 .XX ± .010 .X ± .030	DANIELS MANUFACTURING CORP. 526 Thorpe Road Orlando, Florida 32824 PAGE 58164
A	NEW RELEASE.	DYO	05-15-14	MMK		DWN BY: DYO		
REV.	DESCRIPTION	BY	DATE	APR.		APPROVED:	ANGLES: ± 1°	PART NO.   A   WA23-139L-ENV