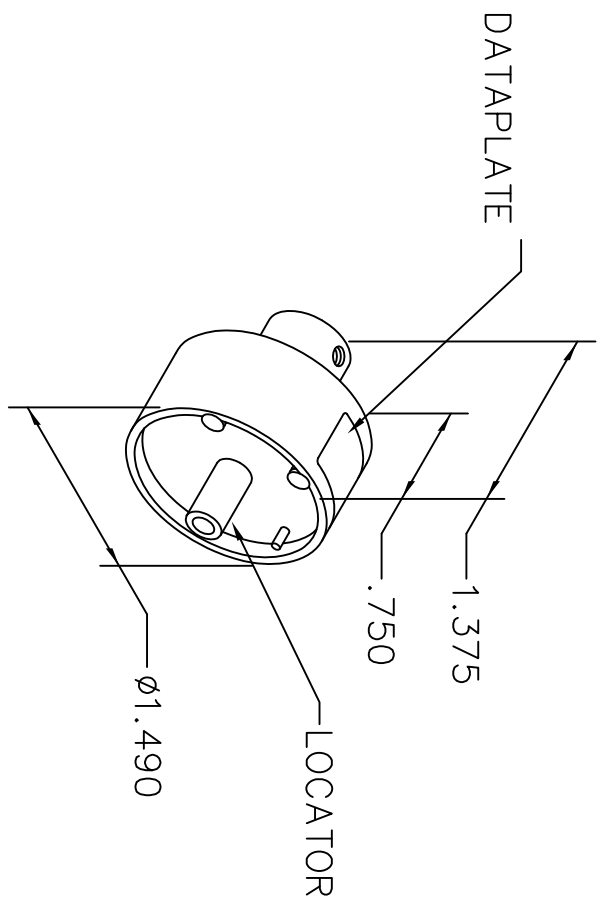


REVISIONS				
REV. SYM.	E.C.O. NUMBER	DESCRIPTION	BY DATE	APP'D DATE
1		ORIGINAL RELEASE	JWJ 8-28-07	RRR 8-28-07

**UNCONTROLLED DOCUMENT  
WILL NOT BE UPDATED**



CONTACTS	22	20	26/ 20	18	26/ 18	22/ 18	16	18/ 18	18/ 18	WIRE SIZE	USE WITH M310 TOOL
YPN025-009	2	3	3	3							
YSK025-011											
YPN025-010					4	4	4	4	5		
YSK025-012											

DATAPLATE

LOCATOR	
HOLE DIMENSIONS	ADDITIONAL FEATURES
ø.109 ∓.709	┌┐ ø.257 ∓.453

**RESTRICTED & CONFIDENTIAL**

CONFIDENTIAL PROPERTY OF DANIELS MANUFACTURING CORP. NOT TO BE DISCLOSED TO OTHERS, REPRODUCED OR USED FOR ANY OTHER PURPOSE, EXCEPT AS AUTHORIZED IN WRITING BY DANIELS MANUFACTURING. MUST BE RETURNED TO DANIELS MANUFACTURING CORP. ON COMPLETION OF ORDER OR OTHER PURPOSE FOR WHICH LENT.

**DO NOT SCALE DRAWING**

DRN. J. JOYCE	DATE 8/28/07
CHKD. RRR	DATE 8/28/07
APPD.	DATE
APPD.	DATE

**NOTE:**  
THIS DRAWING IS AN OUTLINE DRAWING OF THE RESPECTIVE DMC PART NUMBER INDICATED. ACTUAL DMC PART NUMBER IS DRAWING NUMBER WITHOUT THE "-ENV" SUFFIX.

**WHERE USED:**

SIZE A	SCALE NONE	CAD P/N TP793-ENV	SHEET 1 OF 1
POSTING		DMG. NO. TP793-ENV	REV. 1

**DMC** DANIELS MANUFACTURING CORP.  
ORLANDO, FLORIDA  
CAGE 11851

TITLE  
SINGLE POSITION HEAD  
ENVELOPE DRAWING