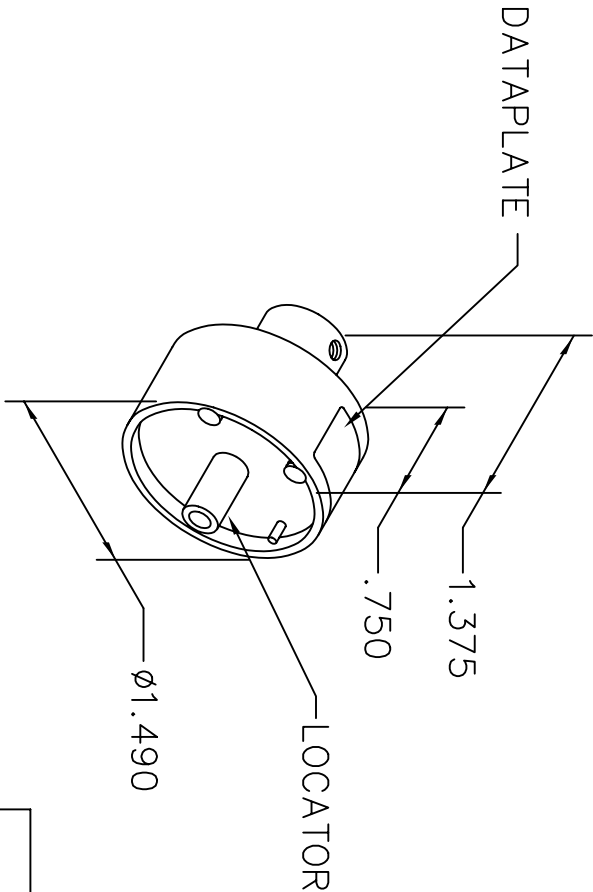


REVISIONS				
REV. SYM.	E.C.O. NUMBER	DESCRIPTION	BY DATE	APP'D DATE
1		ORIGINAL RELEASE	PFD 10-17-91	WV 10-17-91

UNCONTROLLED DOCUMENT  
WILL NOT BE UPDATED



CONTACT PART NO.	12	14	16	WIRE SIZE
MS27148-1	8			SEL. NO.
MS27148-2		8		
MS27148-3			8	

DATAPLATE

LOCATOR	
HOLE DIMENSIONS	ADDITIONAL FEATURES
ø.157 ▽.219	

RESTRICTED & CONFIDENTIAL	
CONFIDENTIAL PROPERTY OF DANIELS MANUFACTURING CORP. NOT TO BE DISCLOSED TO OTHERS, REPRODUCED OR USED FOR ANY OTHER PURPOSE, EXCEPT AS AUTHORIZED IN WRITING BY DANIELS MANUFACTURING. MUST BE RETURNED TO DANIELS MANUFACTURING CORP. ON COMPLETION OF ORDER OR OTHER PURPOSE FOR WHICH LENT.	
DRN. PD	DATE 10-17-91
CHK'D. WV	DATE 10-17-91
APP'D.	DATE
APP'D.	DATE
NOTE: THIS DRAWING IS AN OUTLINE DRAWING OF THE RESPECTIVE DMC PART NUMBER INDICATED. ACTUAL DMC PART NUMBER IS DRAWING NUMBER WITHOUT THE "-ENV" SUFFIX.	
TITLE: ENVELOPE DRAWING SINGLE POSITION HEAD	
WHERE USED: AF8	
SIZE A	SCALE NTS
CAD P/N TP529-ENV	SHEET 1 OF 1
DMC NO. TP529-ENV	REV. 1

DO NOT SCALE DRAWING