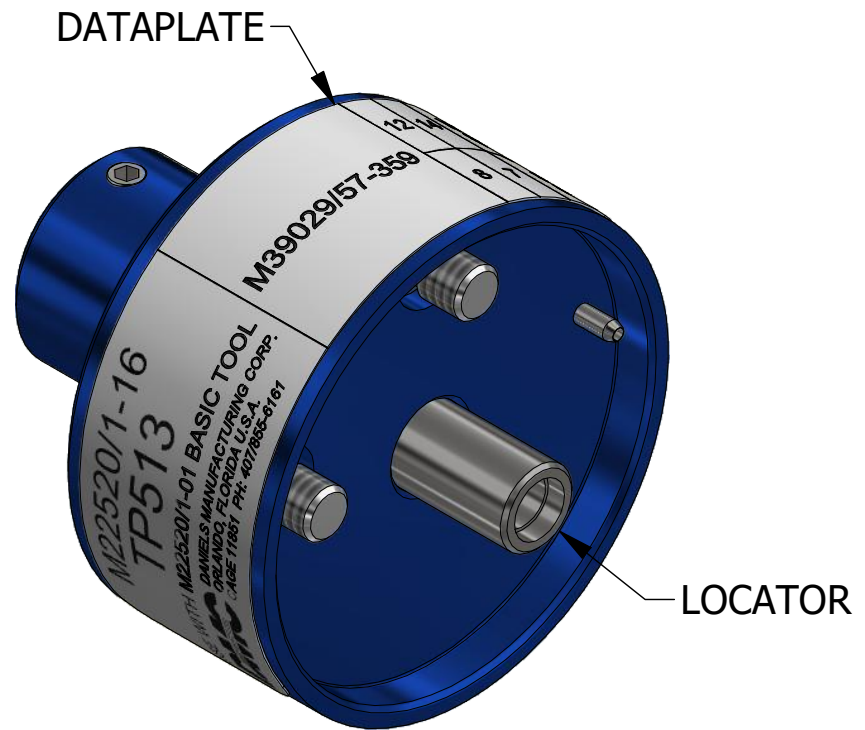
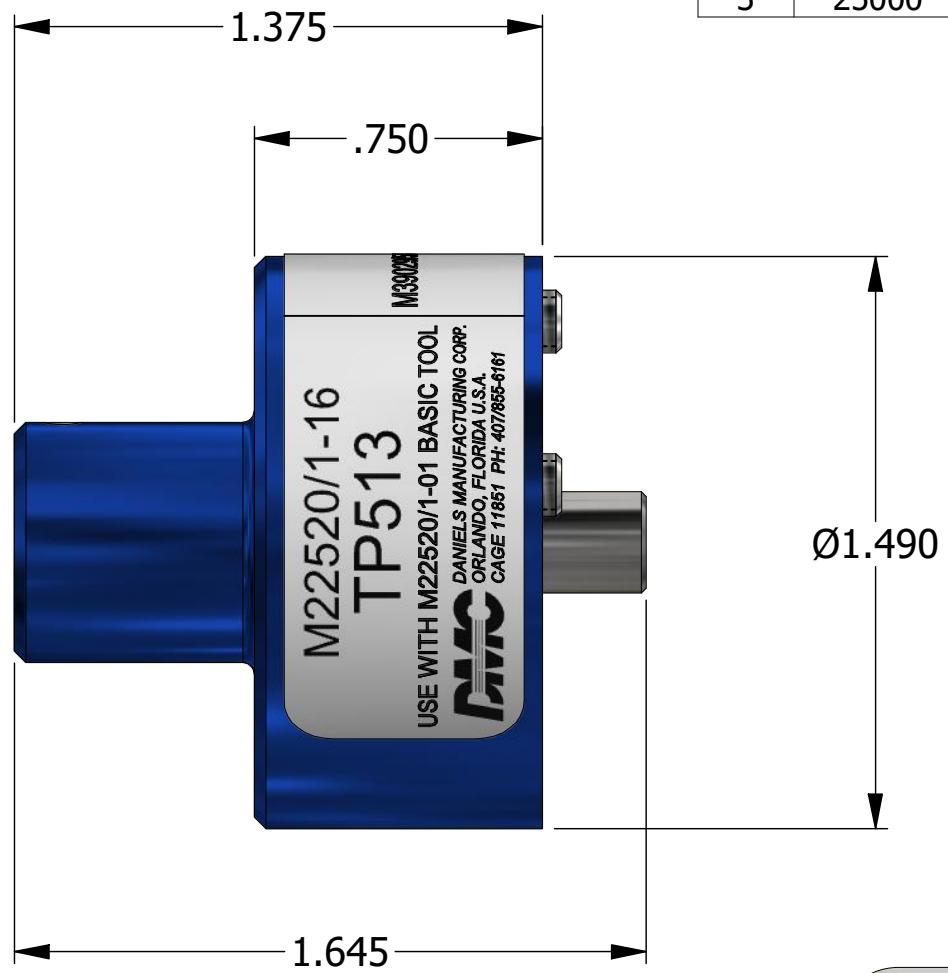


REVISIONS						
REV	ECO NO.	DESCRIPTION	BY	DATE	APP'D BY	DATE
1		ORIGINAL RELEASE	AAM	6/23/1999	RRR	6/23/1999
2	23573	UPDATED & REDRAWN	TonyD	4/1/2015		
3	25000	DATAPLATE UPDATED	TonyD	7/24/2020		



LOCATOR	
HOLE DIMENSIONS	ADDITIONAL FEATURES
Ø.165 ▽.375	└┐Ø.185 ▽.060

**M22520/1-16  
TP513**

USE WITH M22520/1-01 BASIC TOOL

**DMC** DANIELS MANUFACTURING CORP.  
ORLANDO, FLORIDA U.S.A.  
CAGE 11851 PH: 407/855-6161

	12	14	WIRE SIZE
	8	7	SEL No.

M39029/57-359

**DATAPLATE**

**UNCONTROLLED DOCUMENT  
WILL NOT BE UPDATED**

**DIMENSIONS IN INCHES - UNLESS OTHERWISE SPECIFIED**

MATERIAL	ITEM	PART NO.	QTY.	DESCRIPTION / REMARKS
N/A	DRN. A. MOO-YOUNG CHK'D.	DATE 6/23/1999 DATE		<b>DMC</b> DANIELS MANUFACTURING CORP. ORLANDO, FLORIDA CAGE 11851
RESTRICTED & CONFIDENTIAL <small>CONFIDENTIAL PROPERTY OF DANIELS MANUFACTURING CORP. NOT TO BE DISCLOSED TO OTHERS. REPRODUCTION OR USED FOR ANY OTHER PURPOSE EXCEPT AS AUTHORIZED IN WRITING BY DANIELS MANUFACTURING. MUST BE RETURNED TO DANIELS MANUFACTURING CORP. ON COMPLETION OF ORDER OR PURPOSES FOR WHICH LENT.</small>	HEAT TREAT	N/A		NOTE: THIS DRAWING IS AN OUTLINE DRAWING OF THE RESPECTIVE DMC PART NUMBER INDICATED. ACTUAL DMC PART NUMBER IS CAD PART NUMBER WITHOUT THE "-ENV" SUFFIX
CREATED FROM AN INVENTOR MODEL. CHANGES MUST BE REFLECTED IN THE 3D PART	FINISH	N/A		TITLE SINGLE POSITION HEAD (M22520/1-16) ENVELOPE DRAWING
DO NOT SCALE DRAWING				WHERE USED: AF8
			SIZE B	SCALE 2 : 1
				CAD P/N TP513-ENV
				SHEET 1 OF 1
				DWG. NO. TP513
				REV. 3