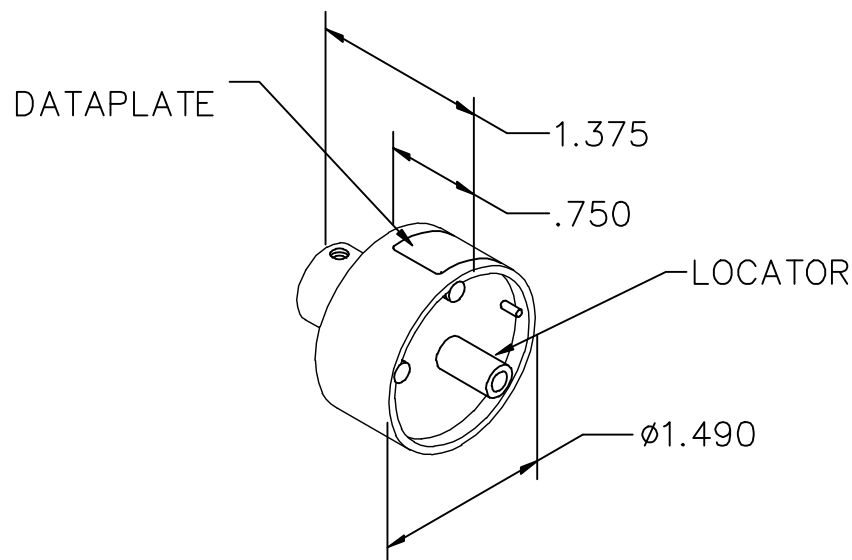


REVISIONS				
REV. SYM.	E.C.O. NUMBER	DESCRIPTION	BY DATE	APP'D DATE
1		ORIGINAL RELEASE	TD 9/23/09	


**UNCONTROLLED DOCUMENT  
WILL NOT BE UPDATED**



DEUTSCH CONTACT	WIRE SIZE
59155-000-SOCKET	
59155-000-PIN	
USE WITH GS226 CRIMP TOOL	

DATAPLATE

LOCATOR	
HOLE DIMENSIONS	ADDITIONAL FEATURES
Ø.165 ▽ THRU	Ø.185 ▽ .050

<u>RESTRICTED &amp; CONFIDENTIAL</u>		DRN. <i>Tony Dilworth</i>	DATE 9/23/09	 <b>DANIELS MANUFACTURING CORP.</b> ORLANDO, FLORIDA CAGE 11851
CONFIDENTIAL PROPERTY OF DANIELS MANUFACTURING CORP. NOT TO BE DISCLOSED TO OTHERS, REPRODUCED OR USED FOR ANY OTHER PURPOSE, EXCEPT AS AUTHORIZED IN WRITING BY DANIELS MANUFACTURING. MUST BE RETURNED TO DANIELS MANUFACTURING CORP. ON COMPLETION OF ORDER OR OTHER PURPOSE FOR WHICH LENT.		CHK'D.	DATE	
		APP'D.	DATE	
		APP'D.	DATE	
DO NOT SCALE DRAWING		NOTE: THIS DRAWING IS AN OUTLINE DRAWING OF THE RESPECTIVE DMC PART NUMBER INDICATED. ACTUAL DMC PART NUMBER IS DRAWING NUMBER WITHOUT THE "-ENV" SUFFIX.		TITLE <b>ENVELOPE DRAWING SINGLE POSITION HEAD</b>
		WHERE USED:	SIZE A	SCALE NTS
		POSTING	CAD P/N TP1575-ENV	SHEET 1 OF 1
			DWG. NO. TP1575-ENV	REV. 1