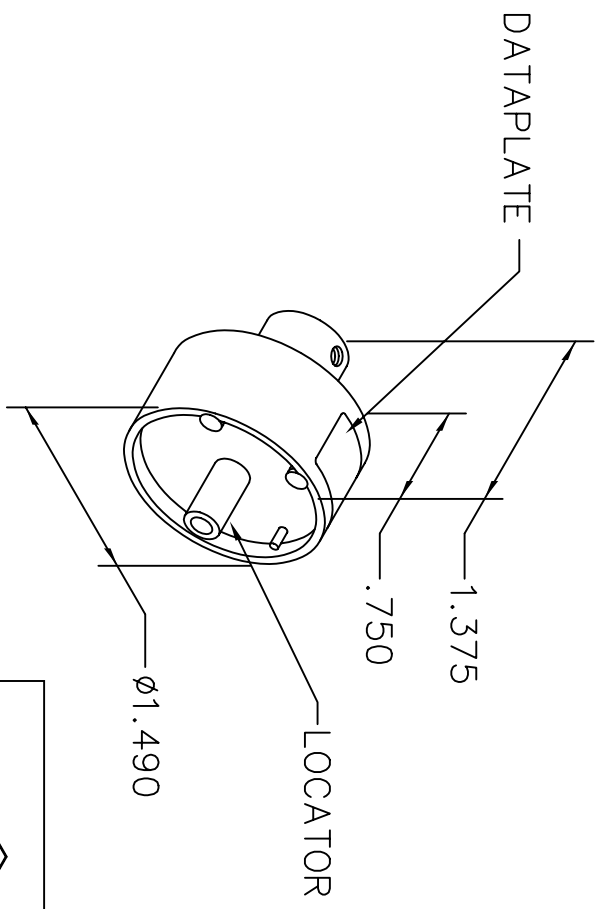



| REVISIONS | | | | |
|-----------|---------------|------------------|------------|------------|
| REV. SYM. | E.C.O. NUMBER | DESCRIPTION | BY DATE | APP'D DATE |
| 1 | | ORIGINAL RELEASE | JMC 9-8-03 | AAM 9-8-03 |

**UNCONTROLLED DOCUMENT
WILL NOT BE UPDATED**



| | | | | | | |
|---|-----------|------|-----|-----|-----|-----|
|  CXTP 40F | CONTACT | CXFA | 1.5 | 2.5 | 4.0 | 6.0 |
| | WIRE SIZE | mm 2 | 1.5 | 2.5 | 4 | 6 |
| USE WITH WA27-309-EP | SEL | | 3 | 4 | 4 | 6 |


DATAPLATE

| | |
|-----------------|---------------------|
| LOCATOR | |
| HOLE DIMENSIONS | ADDITIONAL FEATURES |
| ∅.242 | |
| ∇.632 MIN. | |

RESTRICTED & CONFIDENTIAL

CONFIDENTIAL PROPERTY OF DANIELS MANUFACTURING CORP. NOT TO BE DISCLOSED TO OTHERS, REPRODUCED OR USED FOR ANY OTHER PURPOSE, EXCEPT AS AUTHORIZED IN WRITING BY DANIELS MANUFACTURING. MUST BE RETURNED TO DANIELS MANUFACTURING CORP. ON COMPLETION OF ORDER OR OTHER PURPOSE FOR WHICH LENT.

DO NOT SCALE DRAWING

| | | | |
|---|-------------|--|---|
| DRN. JMC | DATE 9-8-03 |  DANIELS MANUFACTURING CORP. ORLANDO, FLORIDA CAGE 11851 | TITLE ENVELOPE DRAWING SINGLE POSITION HEAD |
| CHK'D. AAM | DATE 9-8-03 | | |
| APP'D. DATE | DATE | | |
| NOTE: THIS DRAWING IS AN OUTLINE DRAWING OF THE RESPECTIVE DMC PART NUMBER INDICATED. ACTUAL DMC PART NUMBER IS DRAWING NUMBER WITHOUT THE "-ENV" SUFFIX. | | WHERE USED: WA27-309-EP | |
| SIZE A | SCALE NTS | CAD P/N TP1322-ENV | SHEET 1 OF 1 |
| POSTING | | DWG. NO. TP1322-ENV | REV. 1 |