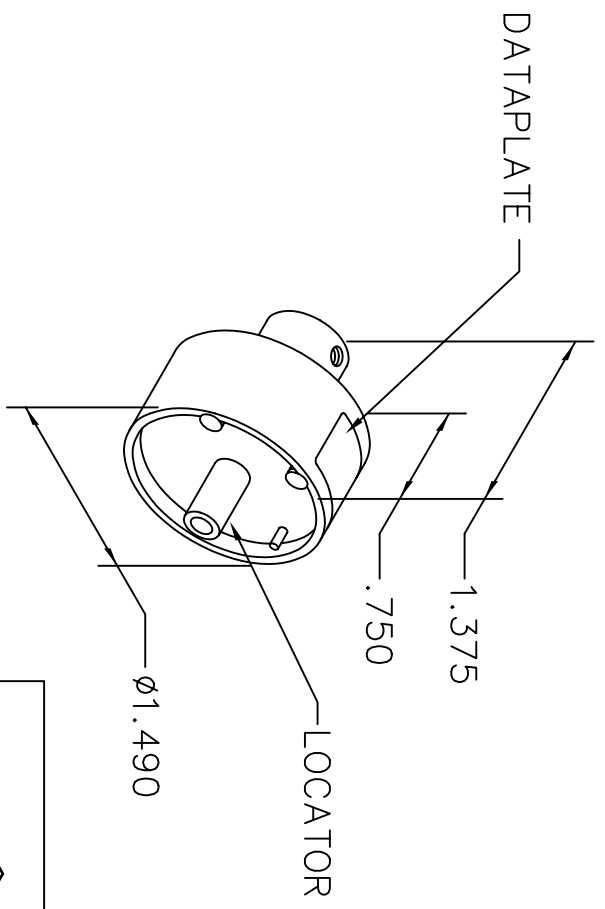



REVISIONS				
REV. SYM.	E.C.O. NUMBER	DESCRIPTION	BY DATE	APP'D DATE
1		ORIGINAL RELEASE	JMC 9-8-03	AAM 9-8-03

**UNCONTROLLED DOCUMENT  
WILL NOT BE UPDATED**



 CXTP 40M	CONTACT	CXMA	1.5	2.5	4.0	6.0
	WIRE SIZE	mm 2	1.5	2.5	4	6
	AWG	16	14	12	6	
USE WITH WA27-309-EP	SEL	3	4	4	6	


DATAPLATE

LOCATOR	
HOLE DIMENSIONS	ADDITIONAL FEATURES
∅.161	L ∅.242
∇.849 MIN.	∇.21

**RESTRICTED & CONFIDENTIAL**

CONFIDENTIAL PROPERTY OF DANIELS MANUFACTURING CORP. NOT TO BE DISCLOSED TO OTHERS. REPRODUCED OR USED FOR ANY OTHER PURPOSE, EXCEPT AS AUTHORIZED IN WRITING BY DANIELS MANUFACTURING. MUST BE RETURNED TO DANIELS MANUFACTURING CORP. ON COMPLETION OF ORDER OR OTHER PURPOSE FOR WHICH LENT.

DO NOT SCALE DRAWING

DRN. JMC	DATE 9-8-03	 DANIELS MANUFACTURING CORP. ORLANDO, FLORIDA CAGE 11851	TITLE ENVELOPE DRAWING SINGLE POSITION HEAD
CHK'D. AAM	DATE 9-8-03		
APP'D. DATE	DATE		
NOTE: THIS DRAWING IS AN OUTLINE DRAWING OF THE RESPECTIVE DMC PART NUMBER INDICATED. ACTUAL DMC PART NUMBER IS DRAWING NUMBER WITHOUT THE "-ENV" SUFFIX.		WHERE USED: WA27-309-EP	
SIZE A	SCALE NTS	CAD P/N TP1321-ENV	SHEET 1 OF 1
POSTING		DWG. NO. TP1321-ENV	REV. 1