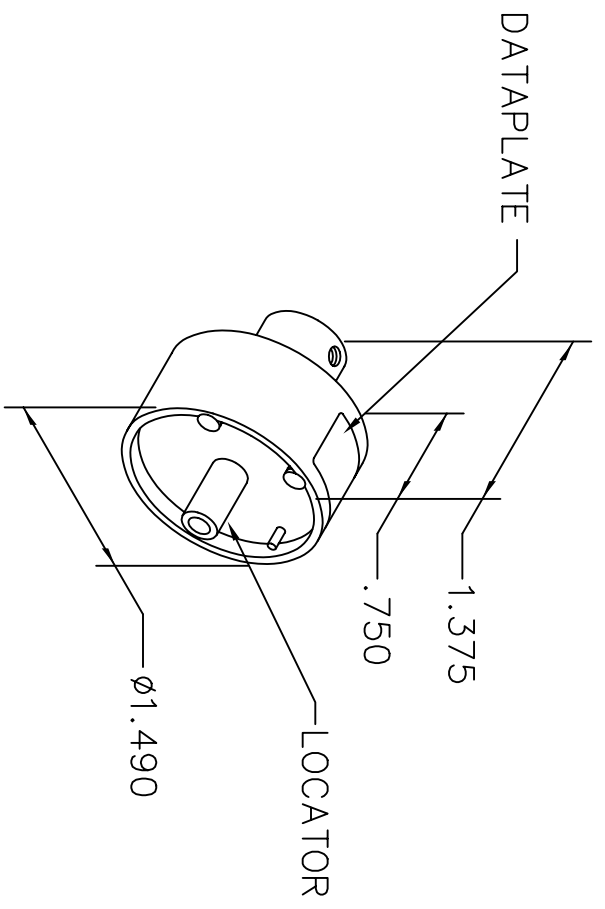


REVISIONS					
REV. SYM.	E.C.O. NUMBER	DESCRIPTION	BY DATE	APP'D DATE	
1		ORIGINAL RELEASE	AAM 1-16-98	RRR 1-16-98	
2		ADDED "...OR M321"	AAM 7-6-99	RRR 7-6-99	

**UNCONTROLLED DOCUMENT
WILL NOT BE UPDATED**



AMPHENOL SOCAPEX										
17DM53744-201	17DM53745-201									WIRE
17DM53744-206	17DM53745-207		2	3						SEL. NO. USE WITH M317 OR M321
17DM53744-207	17DM53745-208	1	2							

DATAPLATE

LOCATOR	
HOLE DIMENSIONS	ADDITIONAL FEATURES
ø.147 ±.619	L □ ø.221 ±.589

RESTRICTED & CONFIDENTIAL

CONFIDENTIAL PROPERTY OF DANIELS MANUFACTURING CORP. NOT TO BE DISCLOSED TO OTHERS, REPRODUCED OR USED FOR ANY OTHER PURPOSE, EXCEPT AS AUTHORIZED IN WRITING BY DANIELS MANUFACTURING. MUST BE RETURNED TO DANIELS MANUFACTURING CORP. ON COMPLETION OF ORDER OR OTHER PURPOSE FOR WHICH LENT.

DO NOT SCALE DRAWING

DRN. A. MOO-YOUNG	DATE 1-16-98	TITLE		WHERE USED: M317 OR M321	
CHK'D. RRR	DATE 1-16-98	ENVELOPE DRAWING SINGLE POSITION HEAD		CAD P/N TP1131-ENV	
APP'D.	DATE	DANIELS MANUFACTURING CORP. ORLANDO, FLORIDA CAGE 11851		SHEET 1 OF 1	
APP'D.	DATE	NOTE: THIS DRAWING IS AN OUTLINE DRAWING OF THE RESPECTIVE DMC PART NUMBER INDICATED. ACTUAL DMC PART NUMBER IS DRAWING NUMBER WITHOUT THE "-ENV" SUFFIX.		REV. 2	