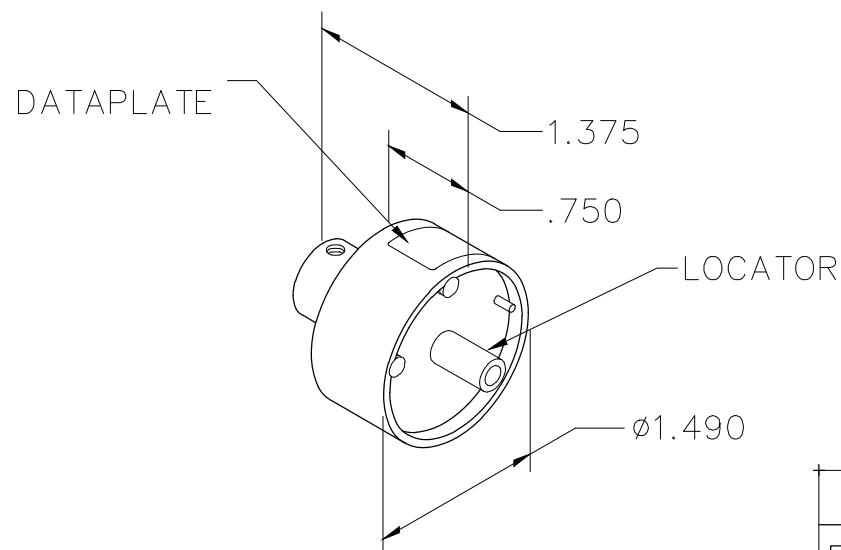


REVISIONS				
REV. SYM.	E.C.O. NUMBER	DESCRIPTION	BY DATE	APP'D DATE
1		ORIGINAL RELEASE	AAM 11-8-01	RRR 11-8-01
2	21800	DATAPLATE CHANGE	TD 6-30-10	


**UNCONTROLLED DOCUMENT
WILL NOT BE UPDATED**



FCT CONTACTS	20	18	16	14	12	WIRE SIZE
FMP018S***, FMP336S***				4	5	SELECTOR NUMBER
FMP043S***, FMP341S***	2	2	3			
USE WITH M309						

DATAPLATE

LOCATOR	
HOLE DIMENSIONS	ADDITIONAL FEATURES
Ø.191 ▽.547	□ Ø.221 ▽.30

<div>RESTRICTED & CONFIDENTIAL</div> <div>CONFIDENTIAL PROPERTY OF DANIELS MANUFACTURING CORP. NOT TO BE DISCLOSED TO OTHERS, REPRODUCED OR USED FOR ANY OTHER PURPOSE, EXCEPT AS AUTHORIZED IN WRITING BY DANIELS MANUFACTURING. MUST BE RETURNED TO DANIELS MANUFACTURING CORP. ON COMPLETION OF ORDER OR OTHER PURPOSE FOR WHICH LENT.</div> <div>DO NOT SCALE DRAWING</div>	DRN. A. MOO—YOUNG	DATE 11-8-01	<div><div>DANIELS MANUFACTURING CORP. ORLANDO, FLORIDA CAGE 11851</div></div>			
	CHK'D. RRR	DATE 11-8-01				
	APP'D.	DATE	TITLE <div>ENVELOPE DRAWING SINGLE POSITION HEAD</div>			
	APP'D.	DATE				
	NOTE: THIS DRAWING IS AN OUTLINE DRAWING OF THE RESPECTIVE DMC PART NUMBER INDICATED. ACTUAL DMC PART NUMBER IS DRAWING NUMBER WITHOUT THE "-ENV" SUFFIX.					WHERE USED: M309
		SIZE A	SCALE NTS	CAD P/N TP1073-ENV	SHEET 1	OF 1
		POSTING		DWG. NO. TP1073-ENV	REV. 2	