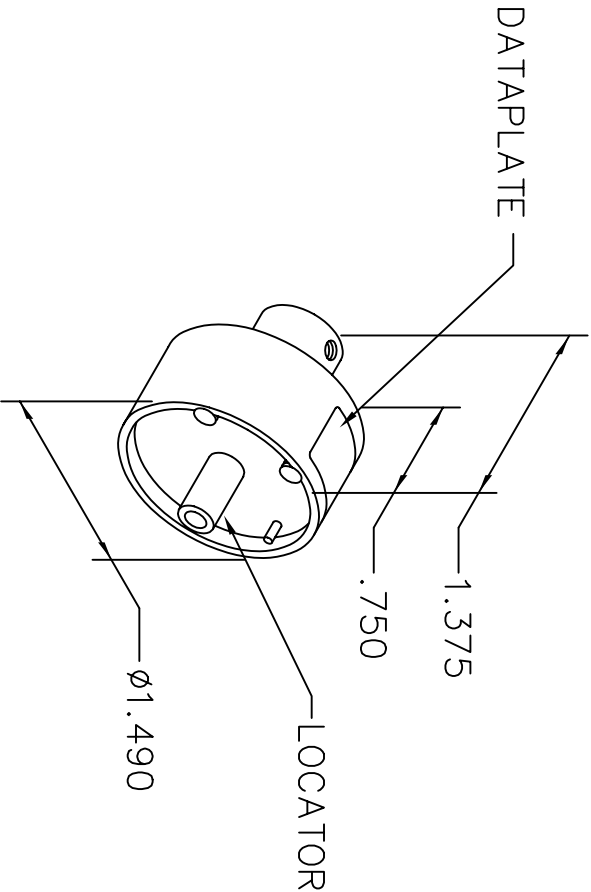


REVISIONS				
REV. SYM.	E.C.O. NUMBER	DESCRIPTION	BY DATE	APP'D DATE
1		ORIGINAL RELEASE	JWJ 10/3/03	RRR 10/3/03

UNCONTROLLED DOCUMENT
WILL NOT BE UPDATED



CONTACT	16	WIRE SIZE
HARTING	3	SELECTOR NUMBER
09030006213		
USE WITH M309		

DATAPLATE

LOCATOR	
HOLE DIMENSIONS	ADDITIONAL FEATURES
ø.228 ▽.604	

<div>RESTRICTED & CONFIDENTIAL</div>		<div>DATE</div>	
<div>CONFIDENTIAL PROPERTY OF DANIELS MANUFACTURING CORP. NOT TO BE DISCLOSED TO OTHERS, REPRODUCED OR USED FOR ANY OTHER PURPOSE, EXCEPT AS AUTHORIZED IN WRITING BY DANIELS MANUFACTURING. MUST BE RETURNED TO DANIELS MANUFACTURING CORP. ON COMPLETION OF ORDER OR OTHER PURPOSE FOR WHICH LENT.</div>		<div>DRN. J. JOYCE</div>	<div>10/3/03</div>
		<div>CHK'D. RRR</div>	<div>DATE 10/3/03</div>
		<div>APP'D.</div>	<div>DATE</div>
		<div>APP'D.</div>	<div>DATE</div>
<div>NOTE: THIS DRAWING IS AN OUTLINE DRAWING OF THE RESPECTIVE DMC PART NUMBER INDICATED. ACTUAL DMC PART NUMBER IS DRAWING NUMBER WITHOUT THE "-ENV" SUFFIX.</div>			
<div>DO NOT SCALE DRAWING</div>			

<div>DMC</div> <div>DANIELS MANUFACTURING CORP. ORLANDO, FLORIDA CAGE 11851</div>			
<div>TITLE</div> <div>ENVELOPE DRAWING SINGLE POSITION HEAD</div>			
<div>WHERE USED: M309</div>			
<div>SIZE</div>	<div>SCALE</div>	<div>CAD P/N</div>	<div>SHEET OF</div>
<div>A</div>	<div>NTS</div>	<div>TP1058-ENV</div>	<div>1 1</div>
<div>POSTING</div>	<div>DWG. NO.</div>	<div>TP1058-ENV</div>	<div>REV. 1</div>



DANIELS MANUFACTURING CORP.
ORLANDO, FLORIDA
CAGE 11851