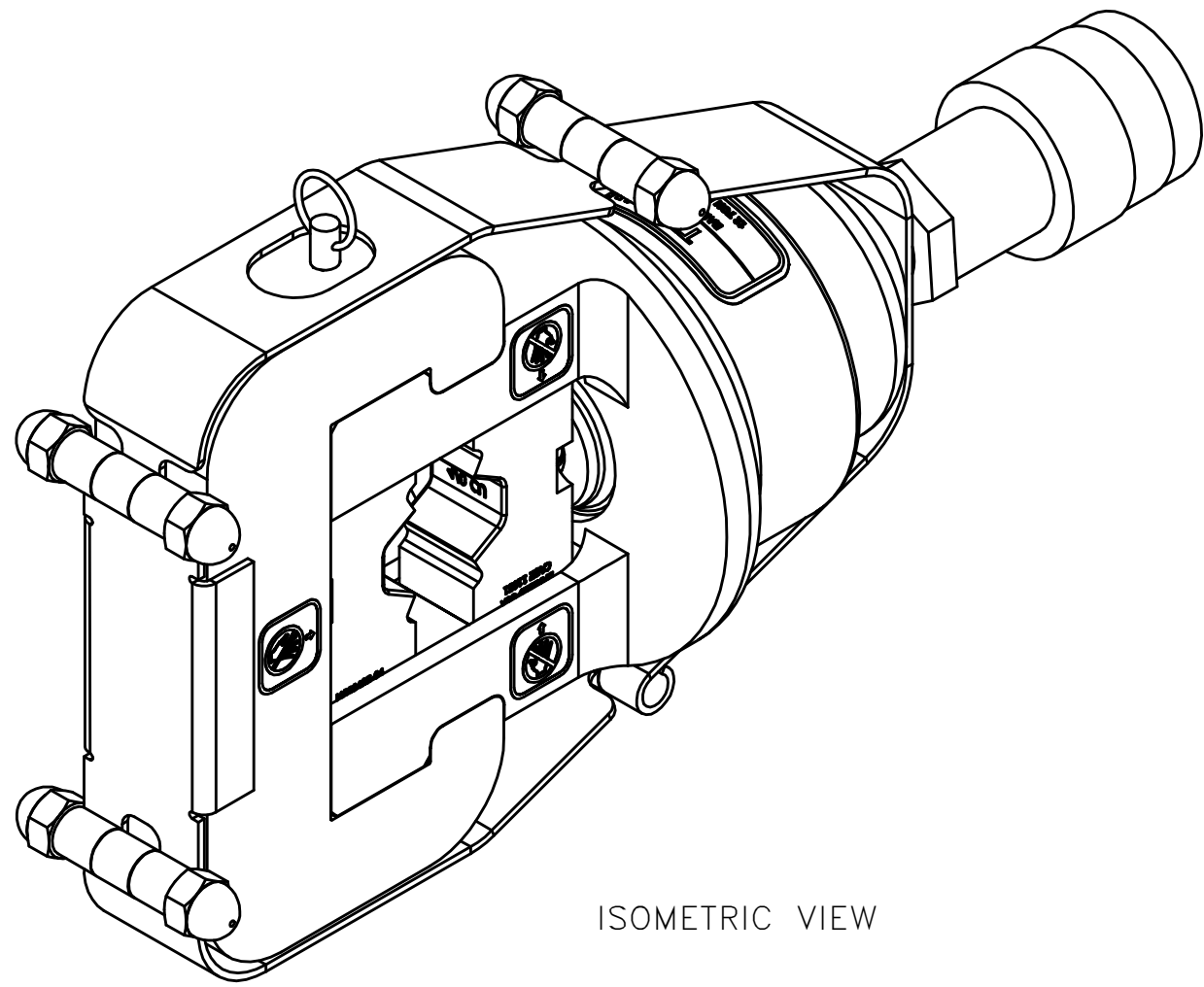
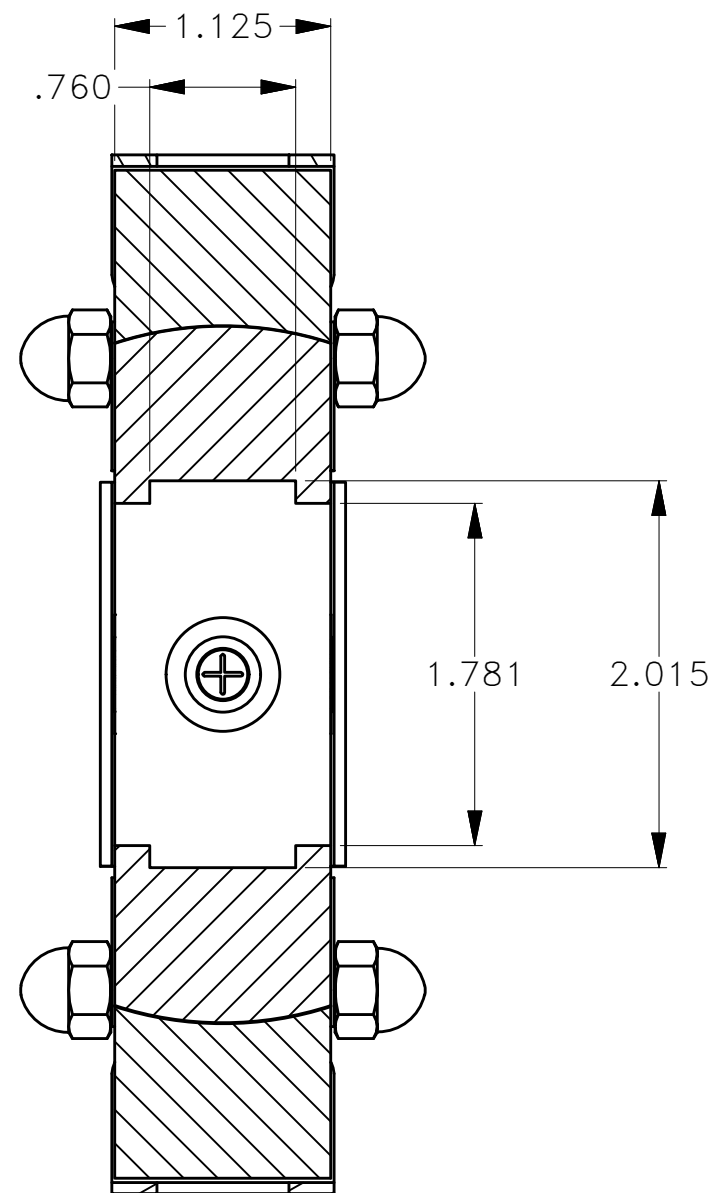
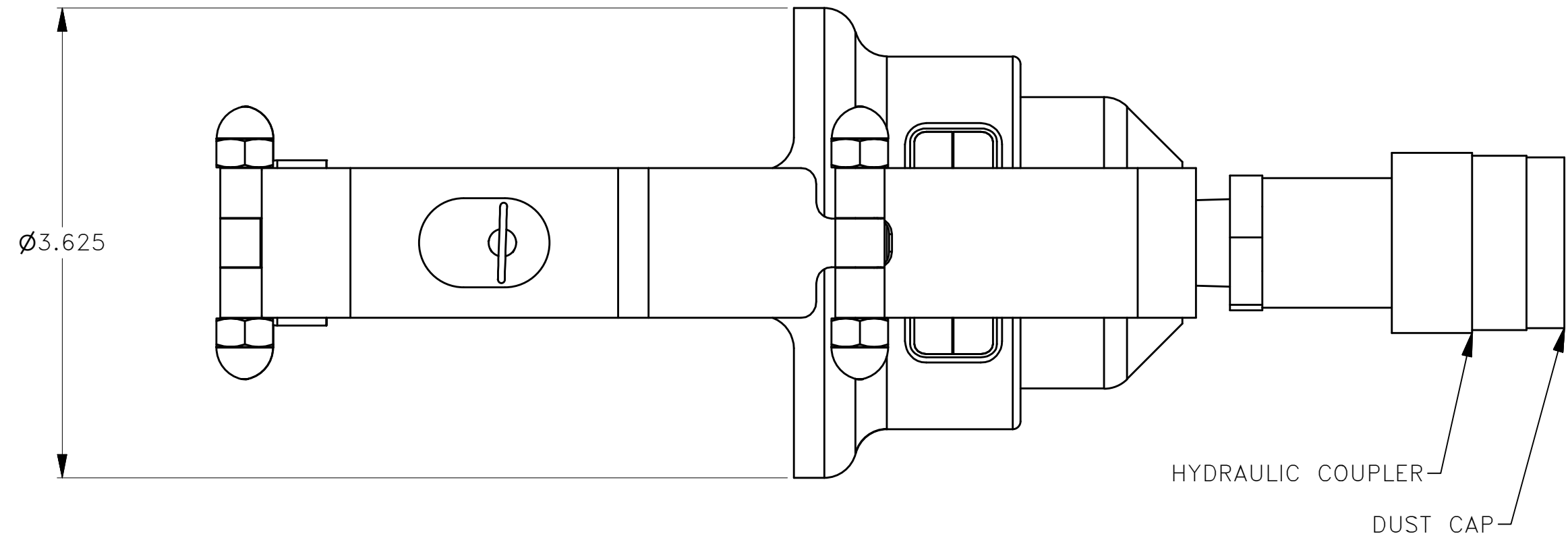


THIS DOCUMENT IS FOR REFERENCE ONLY. USERS MUST ASSURE THEY ARE USING THE CORRECT REVISION.

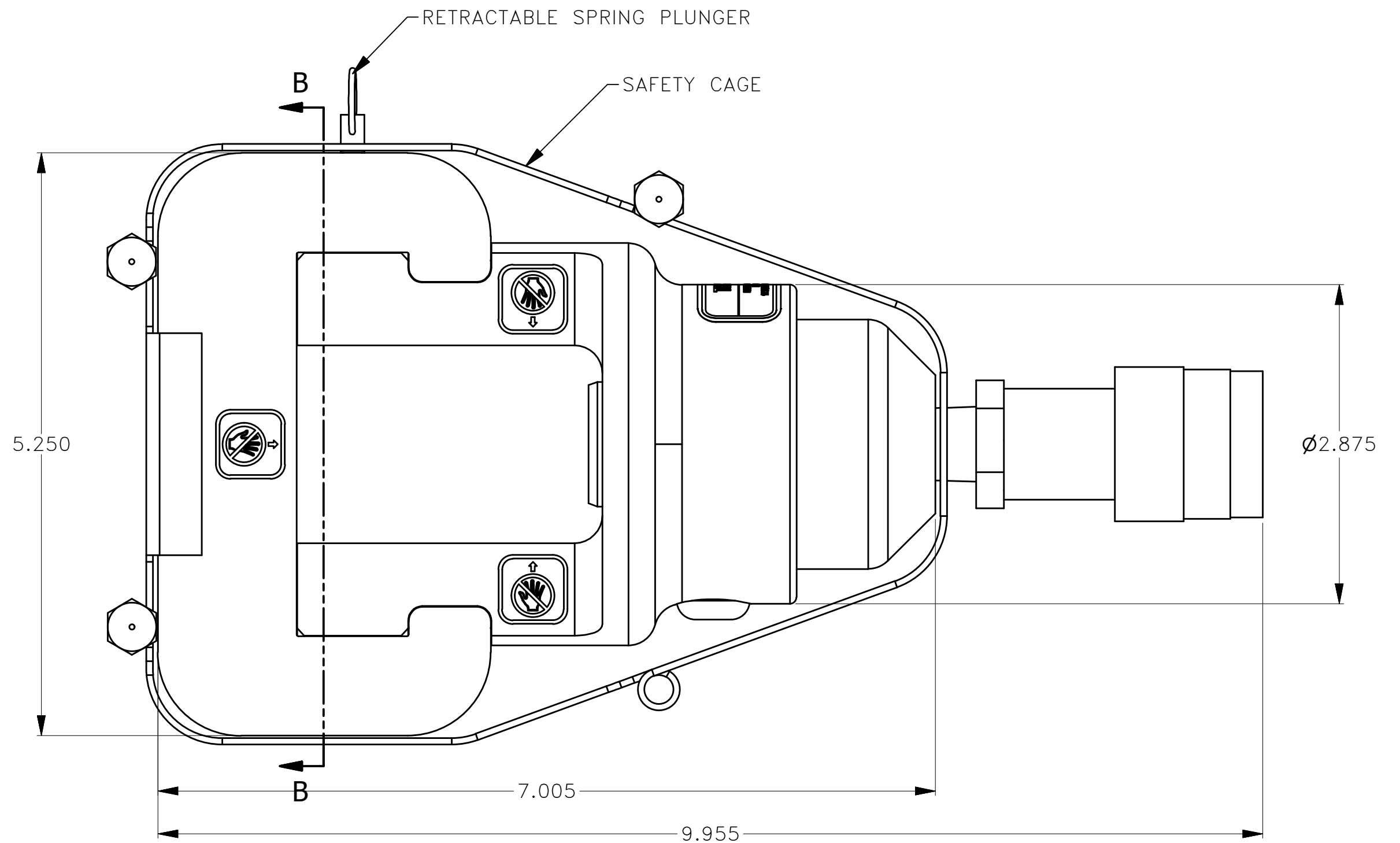
REVISIONS				
REV SYM	ECO NUMBER	DESCRIPTION	BY DATE	APP'D DATE
1		ORIGINAL RELEASE	K. KOONS 1.21.11	D. EBY 1.21.11



ISOMETRIC VIEW



SECTION B-B  
SCALE 1 : 1



UNCONTROLLED DOCUMENT  
WILL NOT BE UPDATED

3. WEIGHT = 8.88lb

2. FORCE OUTPUT = 12 TONS

1. FOR USE WITH DIES HD002 (MS23002) : HD485 (MS90485) : HD442 (MS25442).

NOTES:

RESTRICTED & CONFIDENTIAL		MATERIAL	ITEM	PART NO.	QTY.	DESCRIPTION/REMARKS		
CONFIDENTIAL PROPERTY OF DANIELS MANUFACTURING CORP. NOT TO BE DISCLOSED TO OTHERS, REPRODUCED OR USED FOR ANY OTHER PURPOSE EXCEPT AS AUTHORIZED IN WRITING BY DANIELS MANUFACTURING. MUST BE RETURNED TO DANIELS MANUFACTURING CORP. ON COMPLETION OF ORDER OR OTHER PURPOSE FOR WHICH LENT.		HEAT TREAT	DRN.	Kirk C Koons	DATE	1.21.11		
			CHK'D.	D. EBY	DATE	1.21.11		
			APP'D.		DATE			
			APP'D.		DATE			
CREATED FROM AN INVENTOR MODEL. CHANGES MUST BE REFLECTED IN THE 3D PART		FINISH	NOTE:		THIS DRAWING IS AN OUTLINE DRAWING OF THE RESPECTIVE DMC PART NUMBER INDICATED. ACTUAL DMC PART NUMBER IS DRAWING NUMBER WITHOUT THE "-ENV" SUFFIX			
			DO NOT SCALE DRAWING		WHERE USED:			
			SIZE	C	SCALE	NTS	CAD P/N	TBHD1M-ENV
			POSTING		DWG. NO.	TBHD1M-ENV	SHEET	OF 1 1
				REV.		1		