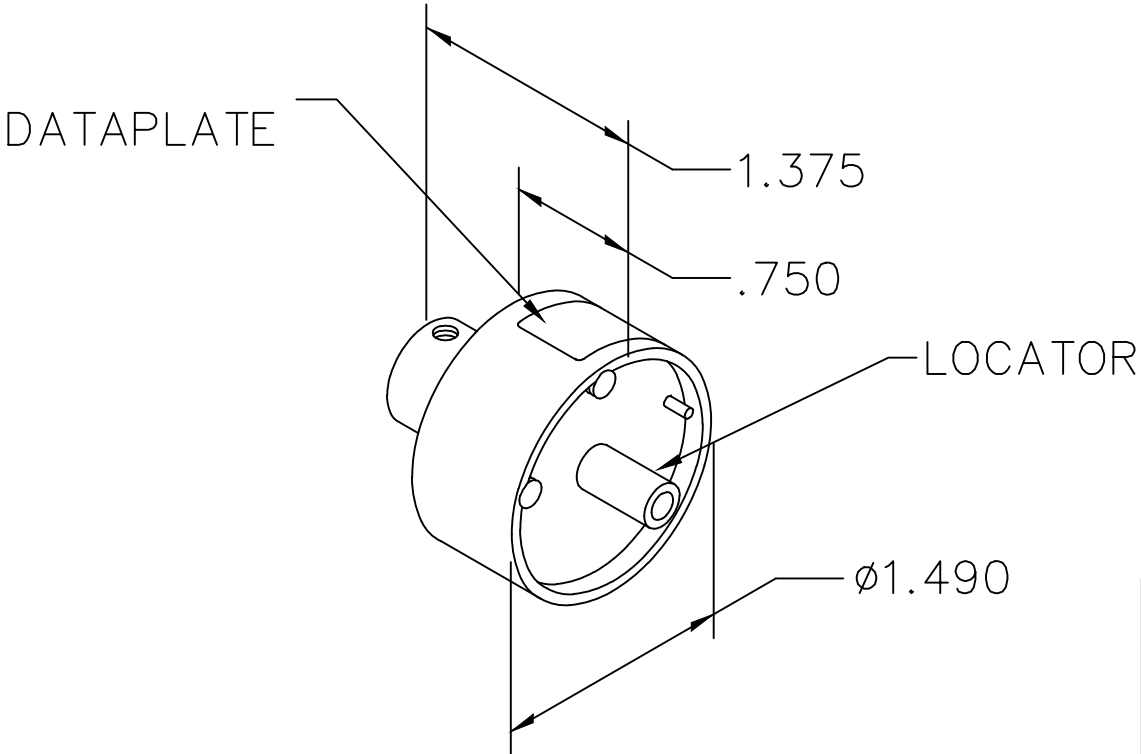




REVISIONS				
REV. SYM.	E.C.O. NUMBER	DESCRIPTION	BY DATE	APP'D DATE
1		ORIGINAL RELEASE	AAM 5-15-00	RRR 5-15-00



HYPERTRONICS	18	WIRE SIZE
YPN025-002 YSK025-003 YSK025-004 YSK025-002	1	SELECTOR NUMBER
USE WITH M300BT		

DATAPLATE

LOCATOR	
HOLE DIMENSIONS	ADDITIONAL FEATURES
$\varnothing .104$ 1.14 MIN.	 $\varnothing .248$ 1.534

RESTRICTED & CONFIDENTIAL  CONFIDENTIAL PROPERTY OF DANIELS MANUFACTURING CORP. NOT TO BE DISCLOSED TO OTHERS, REPRODUCED OR USED FOR ANY OTHER PURPOSE, EXCEPT AS AUTHORIZED IN WRITING BY DANIELS MANUFACTURING. MUST BE RETURNED TO DANIELS MANUFACTURING CORP. ON COMPLETION OF ORDER OR OTHER PURPOSE FOR WHICH LENT.	DRN. A. MOO-YOUNG	DATE 5-15-00	 DANIELS MANUFACTURING CORP. ORLANDO, FLORIDA CAGE 11851	
	CHK'D. RRR	DATE 5-15-00		
	APP'D.	DATE	TITLE ENVELOPE DRAWING SINGLE POSITION HEAD	
	APP'D.	DATE		
DO NOT SCALE DRAWING	NOTE: THIS DRAWING IS AN OUTLINE DRAWING OF THE RESPECTIVE DMC PART NUMBER INDICATED. ACTUAL DMC PART NUMBER IS DRAWING NUMBER WITHOUT THE "-ENV" SUFFIX.		WHERE USED: M300BT	
	SIZE A	SCALE NTS	CAD P/N SP611A-ENV	SHEET 1 OF 1
	POSTING		DWG. NO. SP611A-ENV	REV. 1