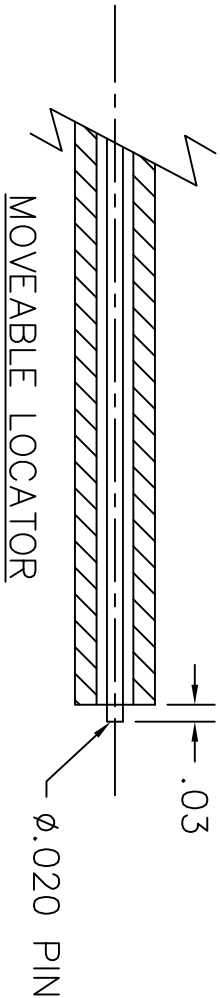
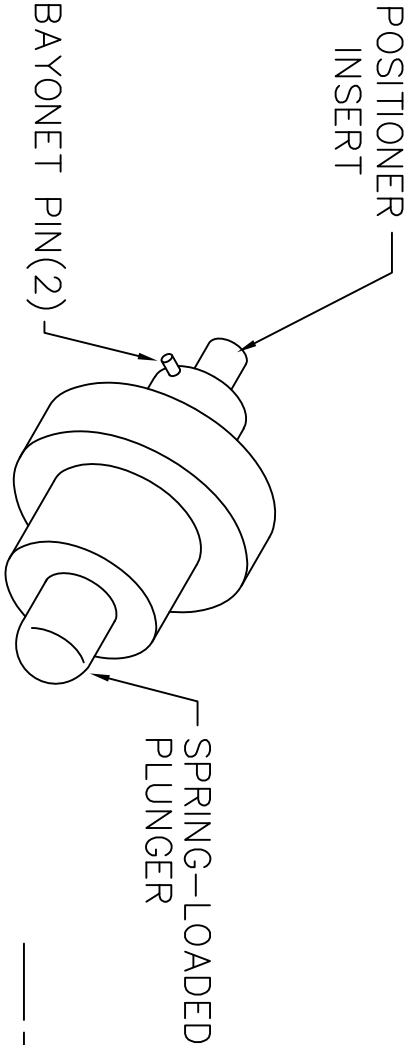
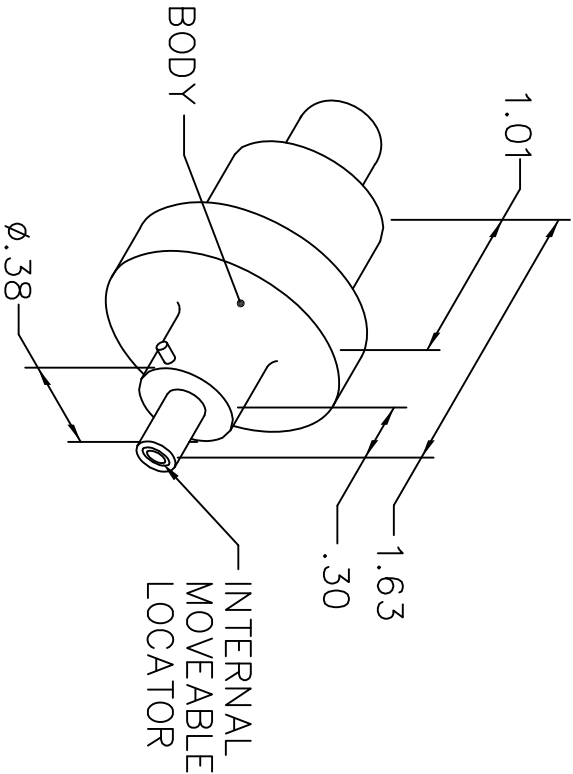


REVISIONS				
REV. SYM.	E.C.O. NUMBER	DESCRIPTION	BY DATE	APP'D DATE
1		ORIGINAL RELEASE	JWJ 5-30-07	RRR 5-30-07

UNCONTROLLED DOCUMENT
WILL NOT BE UPDATED



- NOTES:
1. FOR USE WITH DANIELS CRIMP TOOL MH992.
 2. THE MOVEABLE LOCATOR IS PUSHED THROUGH THE TOOL OPENING BY MEANS OF THE PLUNGER, TO ASSIST IN LOADING EXTREMELY SMALL CONTACTS FOR CRIMPING.

MOVEABLE LOCATOR	
HOLE DIMENSIONS	ADDITIONAL FEATURES
Ø.035 √.619	INTERNAL Ø.020 PIN

<u>RESTRICTED & CONFIDENTIAL</u>	
CONFIDENTIAL PROPERTY OF DANIELS MANUFACTURING CORP. NOT TO BE DISCLOSED TO OTHERS, REPRODUCED OR USED FOR ANY OTHER PURPOSE, EXCEPT AS AUTHORIZED IN WRITING BY DANIELS MANUFACTURING. MUST BE RETURNED TO DANIELS MANUFACTURING CORP. ON COMPLETION OF ORDER OR OTHER PURPOSE FOR WHICH LENT.	
DO NOT SCALE DRAWING	

DRN.	J. JOYCE	DATE	5-30-07
CHK'D.	RRR	DATE	5-30-07
APP'D.		DATE	
APP'D.		DATE	

NOTE: THIS DRAWING IS AN OUTLINE DRAWING OF THE RESPECTIVE DMC PART NUMBER INDICATED. ACTUAL DMC PART NUMBER IS DRAWING NUMBER WITHOUT THE "-ENV" SUFFIX.	
--------------------------------------------------------------------------------------------------------------------------------------------------------------	--

TITLE			
POSITIONER ENVELOPE DRAWING			
DMC DANIELS MANUFACTURING CORP. ORLANDO, FLORIDA CAGE 11851			

WHERE USED: MH992			
SIZE	SCALE	CAD P/N	SHEET OF
A	NTS	K969SE-ENV	1 1
POSTING		DWG NO.	REV.
		K969SE-ENV	1