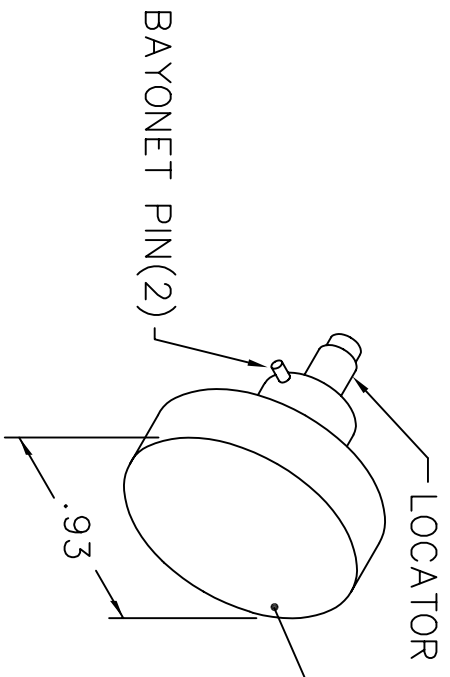
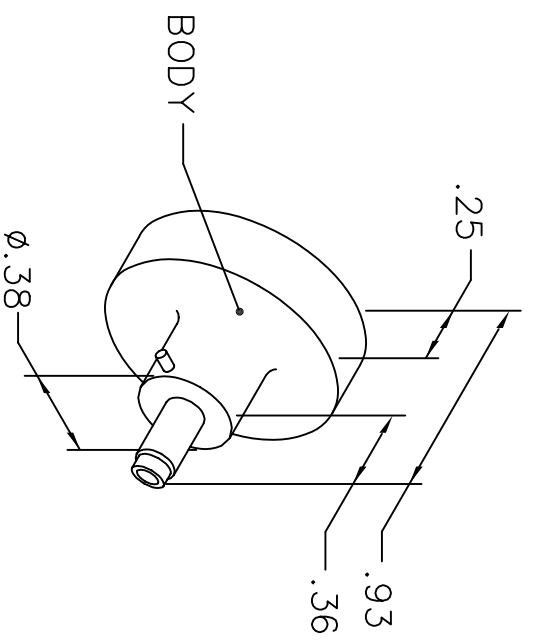


REVISIONS				
REV. SYM.	E.C.O. NUMBER	DESCRIPTION	BY DATE	APP'D DATE
1		ORIGINAL RELEASE	JMC 7-14-03	JWJ 7-14-03

**UNCONTROLLED DOCUMENT
WILL NOT BE UPDATED**



USE WITH CONTACTS

WIRE	20	22	24	26
SEL	7	6	5	4

MS3192A20A
MS3193A20A
NAS1662-20
NAS1663-20

NOTE: FOR USE WITH DANIELS CRIMP TOOLS
ACCOMMODATING "K" SERIES POSITIONERS

LOCATOR	
HOLE DIMENSIONS	ADDITIONAL FEATURES
∅.082 ∇.58	└┘ ∅.109 ∇.090

RESTRICTED & CONFIDENTIAL

CONFIDENTIAL PROPERTY OF DANIELS MANUFACTURING CORP. NOT TO BE DISCLOSED TO OTHERS, REPRODUCED OR USED FOR ANY OTHER PURPOSE, EXCEPT AS AUTHORIZED IN WRITING BY DANIELS MANUFACTURING. MUST BE RETURNED TO DANIELS MANUFACTURING CORP. ON COMPLETION OF ORDER OR OTHER PURPOSE FOR WHICH LENT.

DO NOT SCALE DRAWING

DRN. JMC	DATE 7-14-03	<p>DANIELS MANUFACTURING CORP. ORLANDO, FLORIDA CAGE 11851</p>
CHK'D. JWJ	DATE 7-14-03	
APP'D. _____	DATE _____	
<p>NOTE: THIS DRAWING IS AN OUTLINE DRAWING OF THE RESPECTIVE DMC PART NUMBER INDICATED. ACTUAL DMC PART NUMBER IS DRAWING NUMBER WITHOUT THE "-ENV" SUFFIX.</p>		<p>TITLE: POSITIONER ENVELOPE DRAWING</p> <p>WHERE USED: AFMB</p> <p>CAD P/N: K86-ENV</p> <p>DWG. NO.: K86-ENV</p>
<p>SIZE: A</p> <p>SCALE: NTS</p> <p>POSTING:</p>		<p>SHEET 1 OF 1</p> <p>REV. 1</p>