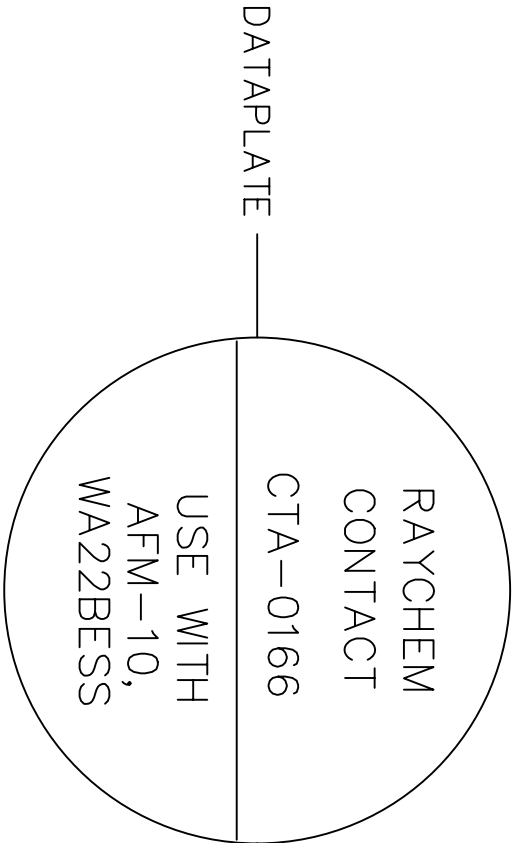
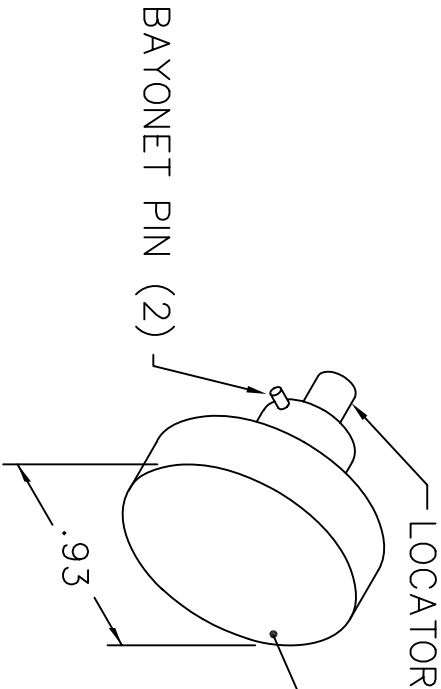
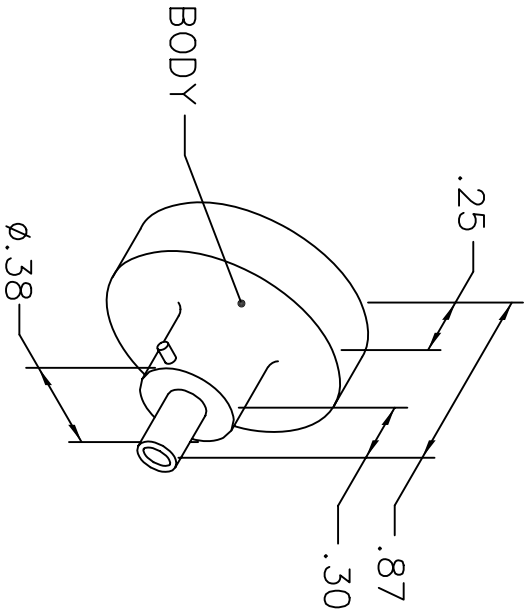


REVISIONS				
REV. SYM.	E.C.O. NUMBER	DESCRIPTION	BY DATE	APP'D DATE
2		P/N WAS K817-11BD WAS "USE WITH WA22BD"	AAM 7-21-99	RRR 7-21-99

UNCONTROLLED DOCUMENT
WILL NOT BE UPDATED



NOTE: FOR USE WITH DANIELS CRIMP TOOLS,
WA22BESS OR AFM-10.

LOCATOR	
HOLE DIMENSIONS	ADDITIONAL FEATURES
Ø.053 ±.290	L ±Ø.081 ±.08

RESTRICTED & CONFIDENTIAL

CONFIDENTIAL PROPERTY OF DANIELS MANUFACTURING CORP. NOT TO BE DISCLOSED TO OTHERS, REPRODUCED OR USED FOR ANY OTHER PURPOSE, EXCEPT AS AUTHORIZED IN WRITING BY DANIELS MANUFACTURING. MUST BE RETURNED TO DANIELS MANUFACTURING CORP. ON COMPLETION OF ORDER OR OTHER PURPOSE FOR WHICH LENT.

DO NOT SCALE DRAWING

DRN. A. MOO-YOUNG	DATE 6-24-99	<div><div>DMC</div><div>DANIELS MANUFACTURING CORP. ORLANDO, FLORIDA CAGE 11851</div></div>	
CHKD. RRR	DATE 6-24-99		
APPD.	DATE		
APPD.	DATE	TITLE POSITIONER ENVELOPE DRAWING	
NOTE: THIS DRAWING IS AN OUTLINE DRAWING OF THE RESPECTIVE DMC PART NUMBER INDICATED. ACTUAL DMC PART NUMBER IS DRAWING NUMBER WITHOUT THE "-ENV" SUFFIX.		WHERE USED: WA22BESS, AFM-10	
SIZE A	SCALE NTS	CAD P/N K817-11BE-ENV	SHEET 1 OF 1
POSTING		DMG. NO. K817-11BE-ENV	REV. 2