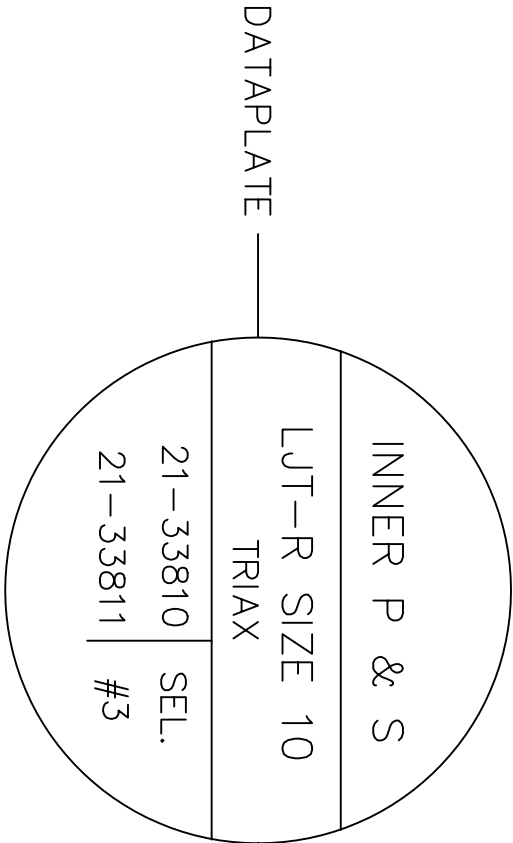
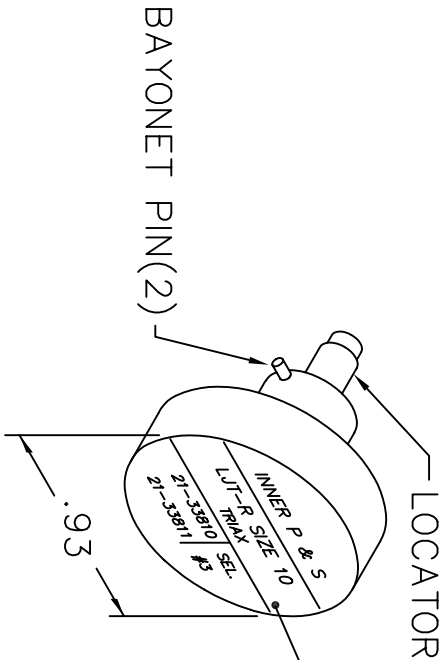
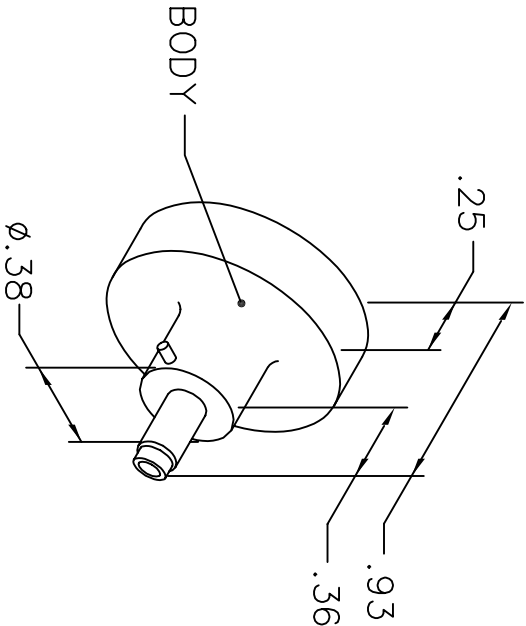


REVISIONS				
REV. SYM.	E.C.O. NUMBER	DESCRIPTION	BY DATE	APP'D DATE
1		ORIGINAL RELEASE	AAM 4-9-99	RRR 4-9-99

UNCONTROLLED DOCUMENT
WILL NOT BE UPDATED



NOTE: FOR USE WITH DANIELS CRIMP TOOLS
ACCOMMODATING "K" SERIES POSITIONERS

LOCATOR	
HOLE DIMENSIONS	ADDITIONAL FEATURES
$\phi .031$	$\perp \phi .041$
$\nabla .385$ MIN.	$\nabla .024$

RESTRICTED & CONFIDENTIAL	
CONFIDENTIAL PROPERTY OF DANIELS MANUFACTURING CORP. NOT TO BE DISCLOSED TO OTHERS, REPRODUCED OR USED FOR ANY OTHER PURPOSE, EXCEPT AS AUTHORIZED IN WRITING BY DANIELS MANUFACTURING. MUST BE RETURNED TO DANIELS MANUFACTURING CORP. ON COMPLETION OF ORDER OR OTHER PURPOSE FOR WHICH LENT.	
DRN. A. MOO-YOUNG	DATE 4-9-99
CHKD. RRR	DATE 4-9-99
APPD.	DATE
APPD.	DATE
NOTE: THIS DRAWING IS AN OUTLINE DRAWING OF THE RESPECTIVE DMC PART NUMBER INDICATED. ACTUAL DMC PART NUMBER IS DRAWING NUMBER WITHOUT THE "-ENV" SUFFIX.	
TITLE: ENVELOPE DRAWING POSITIONER	
WHERE USED: AFM8	
SIZE A	SCALE NONE
CAD P/N K803-ENV	SHEET 1 OF 1
DMC. NO. K803-ENV	REV. 1

DO NOT SCALE DRAWING