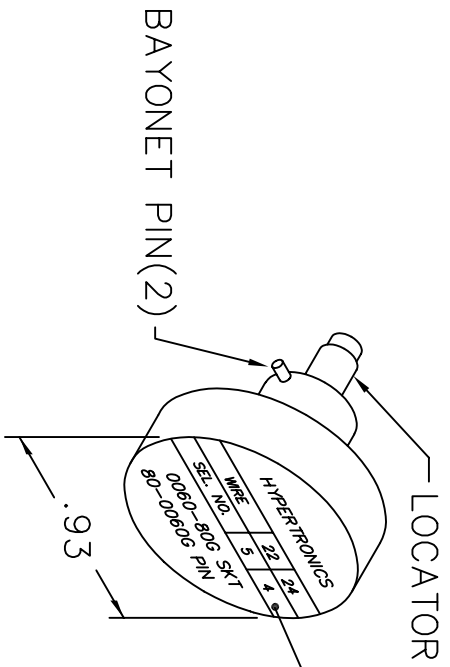
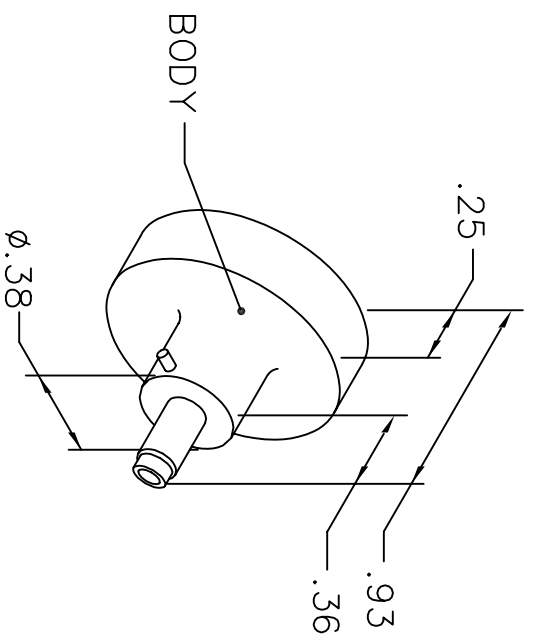


REVISIONS				
REV. SYM.	E.C.O. NUMBER	DESCRIPTION	BY DATE	APP'D DATE
2		REDRAWN	AAM 10-20-99	RRR 10-20-99
3		Ø.106 WAS Ø.089	AAM 6-5-01	RRR 6-5-01

**UNCONTROLLED DOCUMENT
WILL NOT BE UPDATED**



HYPERTRONICS		
WIRE	22	24
SEL. NO.	5	4
0060-80G SKT		
80-0060G PIN		

NOTE: FOR USE WITH DANIELS CRIMP TOOLS
ACCOMMODATING "K" SERIES POSITIONERS

LOCATOR	
HOLE DIMENSIONS	ADDITIONAL FEATURES
Ø.031	└┘ Ø.106
▽.58 MIN.	▽.484

RESTRICTED & CONFIDENTIAL

CONFIDENTIAL PROPERTY OF DANIELS MANUFACTURING CORP. NOT TO BE DISCLOSED TO OTHERS, REPRODUCED OR USED FOR ANY OTHER PURPOSE, EXCEPT AS AUTHORIZED IN WRITING BY DANIELS MANUFACTURING. MUST BE RETURNED TO DANIELS MANUFACTURING CORP. ON COMPLETION OF ORDER OR OTHER PURPOSE FOR WHICH LENT.

DO NOT SCALE DRAWING

DRN.	JS	DATE	6-15-89
CHK'D.	DH	DATE	6-16-89
APP'D.	AAM	DATE	6-19-89
APP'D.		DATE	

NOTE: THIS DRAWING IS AN OUTLINE DRAWING OF THE RESPECTIVE DMC PART NUMBER INDICATED. ACTUAL DMC PART NUMBER IS DRAWING NUMBER WITHOUT THE "-ENV" SUFFIX.

TITLE		WHERE USED:	
ENVELOPE DRAWING POSITIONER		AFM8	
SIZE	SCALE	CAD P/N	SHEET OF
A	NTS	K623-ENV	1 1
POSTING		DWG. NO.	REV.
		K623-ENV	3

DMC DANIELS MANUFACTURING CORP.
ORLANDO, FLORIDA
CAGE 11851