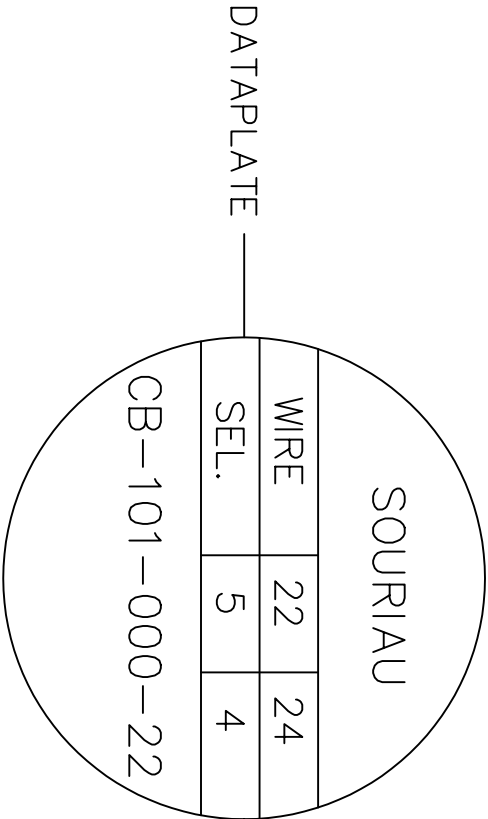
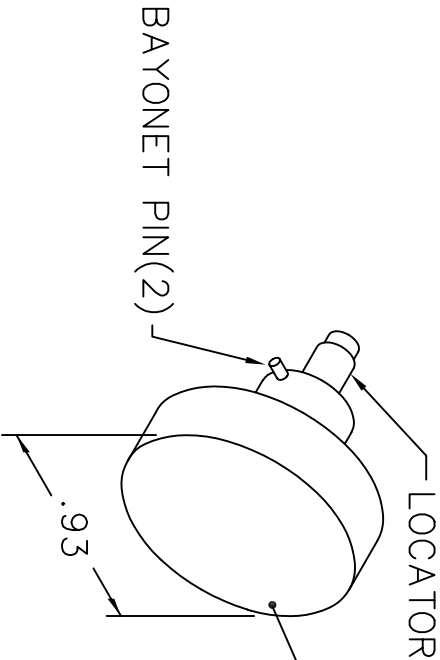
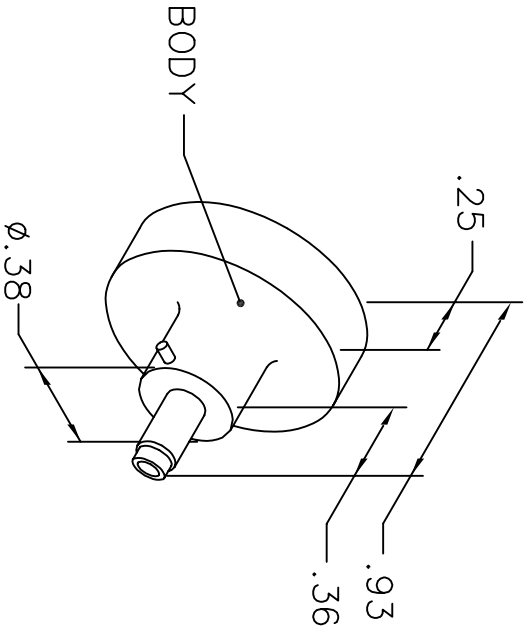


REVISIONS				
REV. SYM.	E.C.O. NUMBER	DESCRIPTION	BY DATE	APP'D DATE
1		ORIGINAL RELEASE	AAM 6-17-03	RRR 6-17-03

UNCONTROLLED DOCUMENT  
WILL NOT BE UPDATED



NOTE: FOR USE WITH DANIELS CRIMP TOOLS  
ACCOMMODATING "K" SERIES POSITIONERS

LOCATOR	
HOLE DIMENSIONS	ADDITIONAL FEATURES
$\phi .047$ $\nabla .235$	$\perp \phi .062$ $\nabla .133$

RESTRICTED & CONFIDENTIAL  CONFIDENTIAL PROPERTY OF DANIELS MANUFACTURING CORP. NOT TO BE DISCLOSED TO OTHERS, REPRODUCED OR USED FOR ANY OTHER PURPOSE, EXCEPT AS AUTHORIZED IN WRITING BY DANIELS MANUFACTURING. MUST BE RETURNED TO DANIELS MANUFACTURING CORP. ON COMPLETION OF ORDER OR OTHER PURPOSE FOR WHICH LENT.		DRN. A. MOO-YOUNG CHK'D. RRR APP'D. APP'D.		DATE 6-17-03 DATE 6-17-03 DATE DATE		TITLE ENVELOPE DRAWING POSITIONER		WHERE USED: AFM8 SIZE SCALE A NTS POSTING		CAD P/N K459-ENV DWC NO. K459-ENV		SHEET 1 OF 1 REV. 1	
DO NOT SCALE DRAWING		NOTE: THIS DRAWING IS AN OUTLINE DRAWING OF THE RESPECTIVE DMC PART NUMBER INDICATED. ACTUAL DMC PART NUMBER IS DRAWING NUMBER WITHOUT THE "-ENV" SUFFIX.											



DANIELS MANUFACTURING CORP.  
ORLANDO, FLORIDA  
CAGE 11851