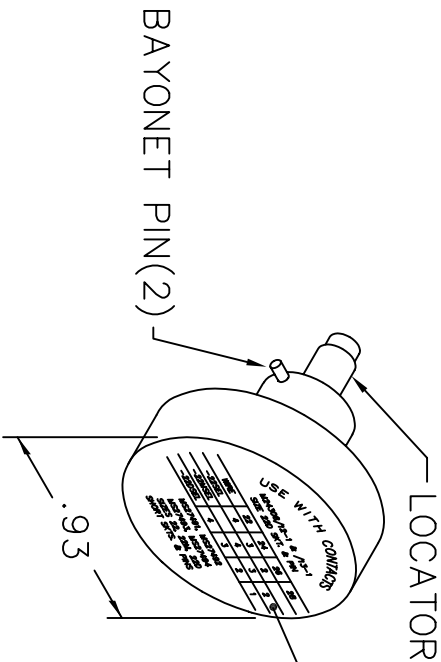
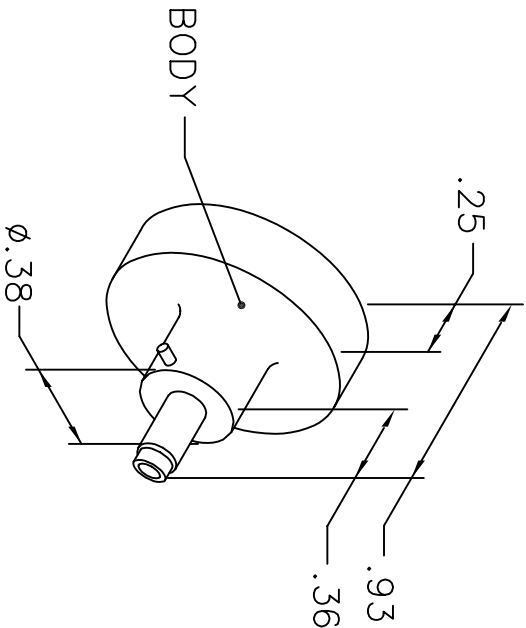


REVISIONS				
REV. SYM.	E.C.O. NUMBER	DESCRIPTION	BY DATE	APP'D DATE
1		ORIGINAL RELEASE	BY 1-14-87	MS 1-14-87

UNCONTROLLED DOCUMENT
WILL NOT BE UPDATED



USE WITH CONTACTS					
M24308/12-1 & /13-1					
SIZE 22D SKT. & PIN					
WIRE	22	24	26	28	
-22SEL	4	3	2		
-22MSEL		4	3	2	
-22DSEL	4	3	2	1	

MS27491, MS27492
MS27493, MS27494
SIZES 22, 22M, 22D
SHORT SKTS. & PINS

NOTE: FOR USE WITH DANIELS CRIMP TOOLS
ACCOMMODATING "K" SERIES POSITIONERS

LOCATOR	
HOLE DIMENSIONS	ADDITIONAL FEATURES
∅.032 ∇.430	└┐∅.063 ∇.415
	└┐∅.078 ∇.162

RESTRICTED & CONFIDENTIAL	
CONFIDENTIAL PROPERTY OF DANIELS MANUFACTURING CORP. NOT TO BE DISCLOSED TO OTHERS, REPRODUCED OR USED FOR ANY OTHER PURPOSE, EXCEPT AS AUTHORIZED IN WRITING BY DANIELS MANUFACTURING. MUST BE RETURNED TO DANIELS MANUFACTURING CORP. ON COMPLETION OF ORDER OR OTHER PURPOSE FOR WHICH LENT.	
DRN. BY DATE	1-14-87
CHK'D. MS	1-14-87
APP'D. AAM	1-14-87
APP'D. DATE	DATE
NOTE: THIS DRAWING IS AN OUTLINE DRAWING OF THE RESPECTIVE DMC PART NUMBER INDICATED. ACTUAL DMC PART NUMBER IS DRAWING NUMBER WITHOUT THE "-ENV" SUFFIX.	
WHERE USED: AFM8	
SIZE	SCALE
A	NTS
POSTING	DWG. NO.
K325-ENV	
SHEET 1 OF 1	
REV. 1	

DO NOT SCALE DRAWING

DANIELS MANUFACTURING CORP.
ORLANDO, FLORIDA
CAGE 11851

ENVELOPE DRAWING
POSITIONER