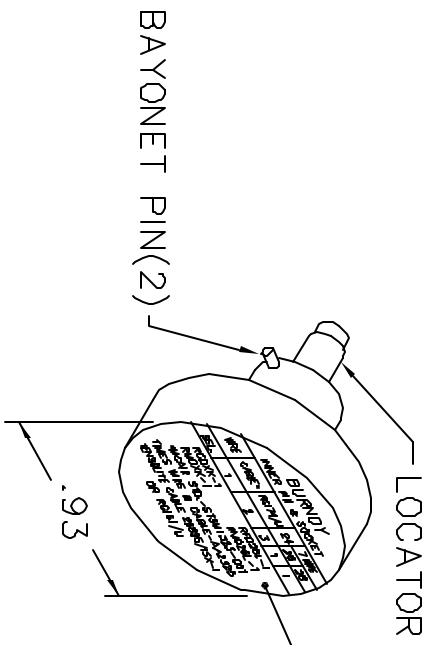
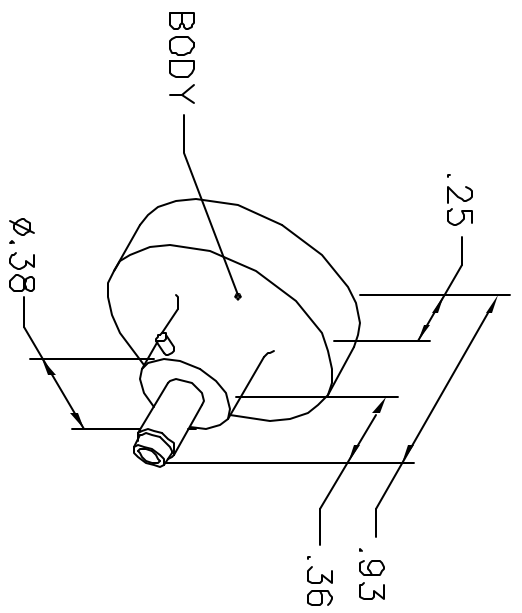


REVISIONS				
REV. SYM.	E.C.D. NUMBER	DESCRIPTION	BY DATE	APP'D DATE
1		ORIGINAL RELEASE	TS 11-1-88	DH 11-1-88

**UNCONTROLLED DOCUMENT
WILL NOT BE UPDATED**



BURNDY
INNER PIN & SOCKET

WIRE	CABLE*	RG174/U	24	7 WIRE	26	28
SEL.	1	2	3	1	1	1

RCDXK-1 RFD26L-1
 RMDXK-1 RMD26L-1
 *MCAIR STD.-ST5M1 323-001
 TIMES WIRE & CABLE-AA23225
 TENSOLITE CABLE 26895/15X-1
 OR RG161/U

NOTE: FOR USE WITH DANIELS CRIMP TOOLS
ACCOMMODATING "K" SERIES POSITIONERS

LOCATOR	ADDITIONAL FEATURES
HOLE DIMENSIONS	
∅.042	
∇.370	

RESTRICTED & CONFIDENTIAL

CONFIDENTIAL PROPERTY OF DANIELS MANUFACTURING CORP. NOT TO BE DISCLOSED TO OTHERS, REPRODUCED OR USED FOR ANY OTHER PURPOSE, EXCEPT AS AUTHORIZED IN WRITING BY DANIELS MANUFACTURING. MUST BE RETURNED TO DANIELS MANUFACTURING CORP. ON COMPLETION OF ORDER OR OTHER PURPOSE FOR WHICH LENT.

DO NOT SCALE DRAWING

DRN.	TS	DATE	DATE
CHKD.	DH	11-1-88	11-1-88
APP'D.	AAM	11-2-88	11-2-88
APP'D.	DATE		

NOTE: THIS DRAWING IS AN OUTLINE DRAWING OF THE RESPECTIVE DMC PART NUMBER INDICATED. ACTUAL DMC PART NUMBER IS DRAWING NUMBER WITHOUT THE "-ENV" SUFFIX.

TITLE	WHERE USED:	CAD P/N	SHEET	OF
ENVELOPE DRAWING POSITIONER	AMMB	K160-ENV	1	1

DANIELS MANUFACTURING CORP.
ORLANDO, FLORIDA
CAGE 17857

POSTING	DWG. NO.	REV.
A	K160-ENV	1