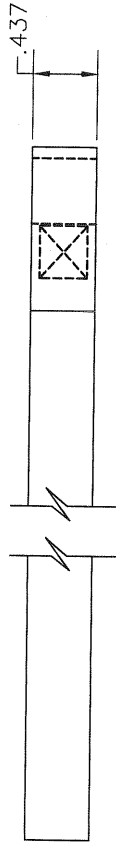
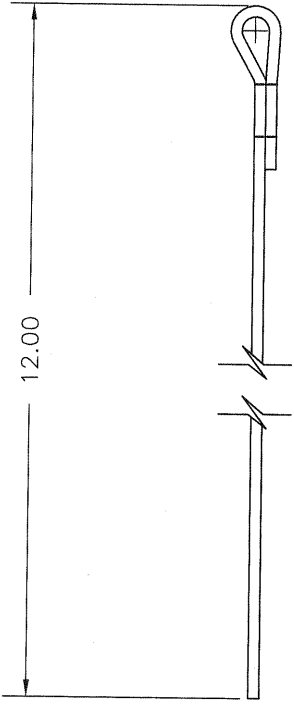


REV. SYM.		E.C.O. NUMBER	DESCRIPTION		BY DATE	APPD DATE
1			ORIGINAL RELEASE		7/23/10	4/10/02

REVISIONS



**UNCONTROLLED DOCUMENT  
WILL NOT BE UPDATED**  
DIMENSIONS IN INCHES - UNLESS OTHERWISE SPECIFIED

1. COLOR: BLACK

NOTES:

RESTRICTED & CONFIDENTIAL CONFIDENTIAL PROPERTY OF DANIELS MANUFACTURING CORP. IS NOT TO BE DISCLOSED TO OTHERS, REPRODUCED OR USED FOR ANY OTHER PURPOSE EXCEPT AS AUTHORIZED IN WRITING BY DANIELS MANUFACTURING. MUST BE RETURNED TO DANIELS MANUFACTURING CORP. ON COMPLETION OF ORDER OR OTHER PURPOSE FOR WHICH LENT.		MATERIAL		ITEM		PART NO.		QTY.		DESCRIPTION/REMARKS	
DO NOT SCALE DRAWING		HEAT TREAT		DRN. <i>Jerry Dilworth</i>		DATE 7/23/10		SCALE		DANIELS MANUFACTURING CORP. ORLANDO, FLORIDA CAGE 17851	
		FINISH		CHK'D.		DATE		SIZE		TITLE	
				APPD.		DATE		B		REPLACEMENT STRAP .437 WIDE ENVELOPE DRAWING	
				APPD.		DATE		NTS		WHERE USED:	
				NOTE: THIS DRAWING IS AN OUTLINE DRAWING OF THE RESPECTIVE DMC PART NUMBER INDICATED. ACTUAL DMC PART NUMBER IS DRAWING NUMBER WITHOUT THE "-ENV" SUFFIX.				POSTING		CAD P/N	
								1		BT-A-6300-ENV	
								1		SHEET OF	
								1		REV	
								1		BT-A-6300-ENV	