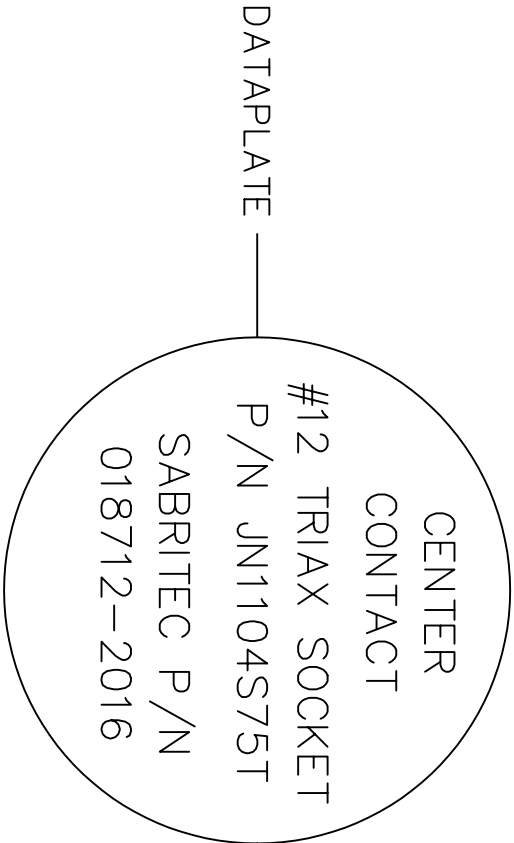
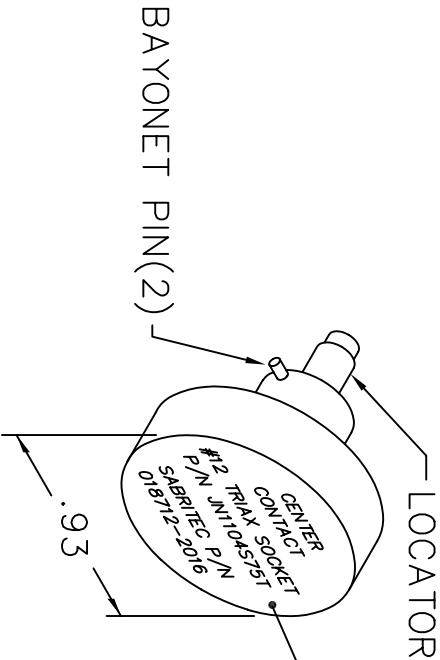
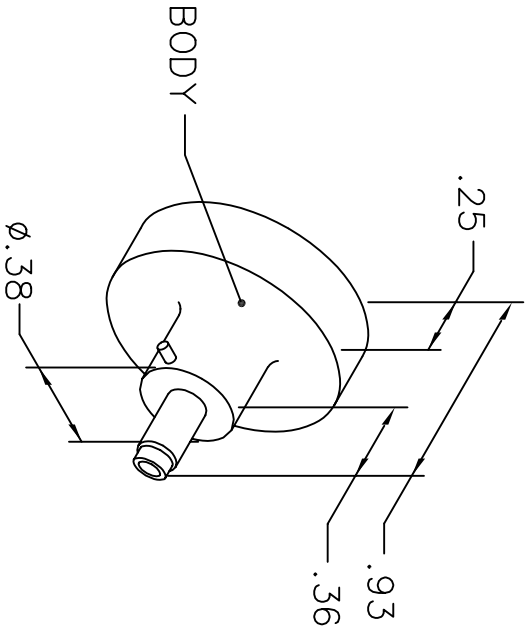


REVISIONS				
REV. SYM.	E.C.O. NUMBER	DESCRIPTION	BY DATE	APP'D DATE
1		ORIGINAL RELEASE	AAM 10-15-99	RRR 10-15-99
2		ADDED SABRITEC P/N	AAM 1-25-00	RRR 1-25-00

UNCONTROLLED DOCUMENT

WILL NOT BE UPDATED



NOTE: FOR USE WITH DANIELS CRIMP TOOLS ACCOMMODATING "K" SERIES POSITIONERS

LOCATOR	
HOLE DIMENSIONS	ADDITIONAL FEATURES
$\phi .035$	
$\nabla .475$	

RESTRICTED & CONFIDENTIAL

CONFIDENTIAL PROPERTY OF DANIELS MANUFACTURING CORP. NOT TO BE DISCLOSED TO OTHERS, REPRODUCED OR USED FOR ANY OTHER PURPOSE, EXCEPT AS AUTHORIZED IN WRITING BY DANIELS MANUFACTURING. MUST BE RETURNED TO DANIELS MANUFACTURING CORP. ON COMPLETION OF ORDER OR OTHER PURPOSE FOR WHICH LENT.

DRN. A. MOO-YOUNG

CHK'D. RRR

APP'D.

APP'D.

DATE 10-15-99

DATE 10-15-99

DATE

DATE

NOTE:

THIS DRAWING IS AN OUTLINE DRAWING OF THE RESPECTIVE DMC PART NUMBER INDICATED. ACTUAL DMC PART NUMBER IS DRAWING NUMBER WITHOUT THE "-ENV" SUFFIX.

TITLE

ENVELOPE DRAWING POSITIONER

WHERE USED: AFM8

SIZE A

SCALE NTS

CAD P/N K1366-ENV

SHEET 1 OF 1

POSTING

DMG. NO. K1366-ENV

REV. 2

DO NOT SCALE DRAWING

DANIELS MANUFACTURING CORP.
ORLANDO, FLORIDA
CAGE 11851