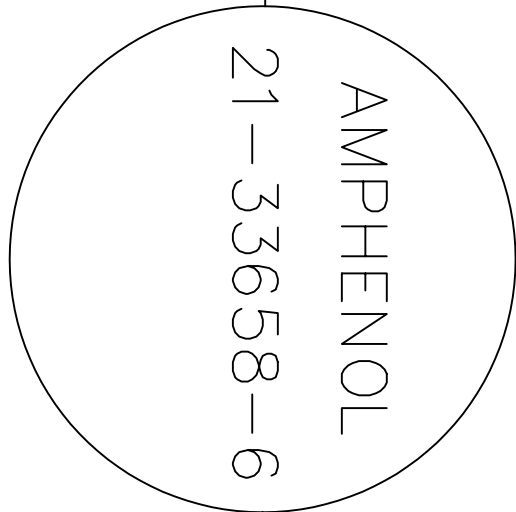
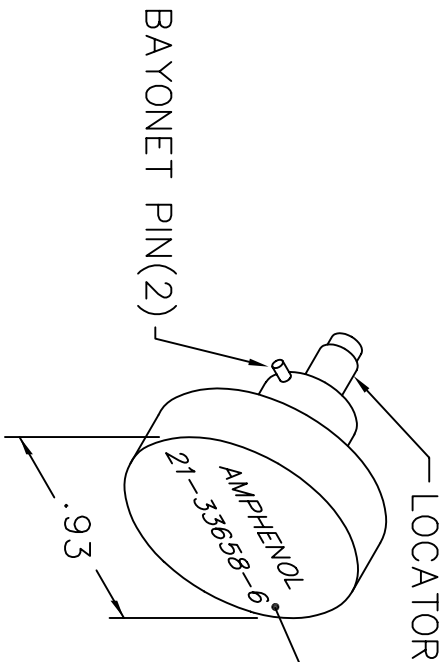
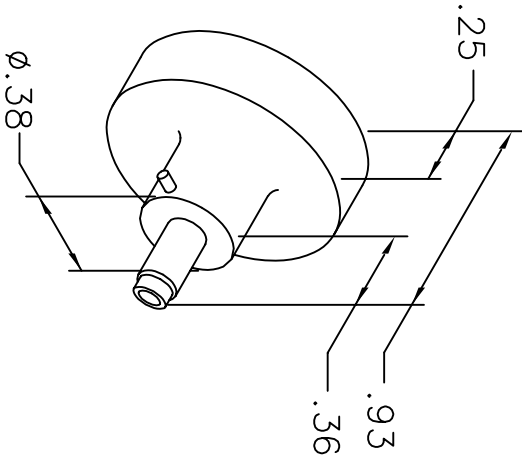


REVISIONS				
REV. SYM.	E.C.O. NUMBER	DESCRIPTION	BY DATE	APP'D DATE
1		ORIGINAL RELEASE	AAM 1-26-01	RRR 1-26-01

UNCONTROLLED DOCUMENT  
WILL NOT BE UPDATED




NOTE: FOR USE WITH DANIELS CRIMP TOOL, AFM8.

LOCATOR	
HOLE DIMENSIONS	ADDITIONAL FEATURES
$\phi .031$	$\perp \phi .055$
$\nabla .580$ MIN.	$\nabla .014$

RESTRICTED & CONFIDENTIAL

CONFIDENTIAL PROPERTY OF DANIELS MANUFACTURING CORP. NOT TO BE DISCLOSED TO OTHERS, REPRODUCED OR USED FOR ANY OTHER PURPOSE, EXCEPT AS AUTHORIZED IN WRITING BY DANIELS MANUFACTURING. MUST BE RETURNED TO DANIELS MANUFACTURING CORP. ON COMPLETION OF ORDER OR OTHER PURPOSE FOR WHICH LENT.

DO NOT SCALE DRAWING

DRN. A. MOO-YOUNG	DATE 1-26-01	 DANIELS MANUFACTURING CORP. ORLANDO, FLORIDA CAGE 11851	
CHKD. RRR	DATE 1-26-01		
APPD.	DATE		
APPD.	DATE	TITLE ENVELOPE DRAWING POSITIONER	
NOTE: THIS DRAWING IS AN OUTLINE DRAWING OF THE RESPECTIVE DMC PART NUMBER INDICATED. ACTUAL DMC PART NUMBER IS DRAWING NUMBER WITHOUT THE "-ENV" SUFFIX.		WHERE USED: AFM8	
SIZE A		SCALE NTS	CAD P/N K1104-ENV
POSTING		DWG. NO. K1104-ENV	SHEET 1 OF 1
			REV. 1