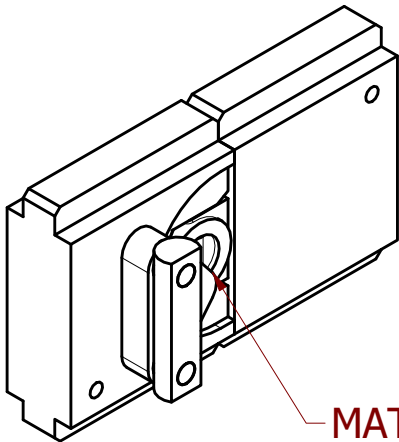
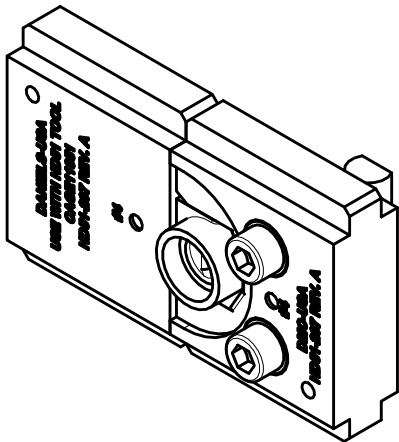
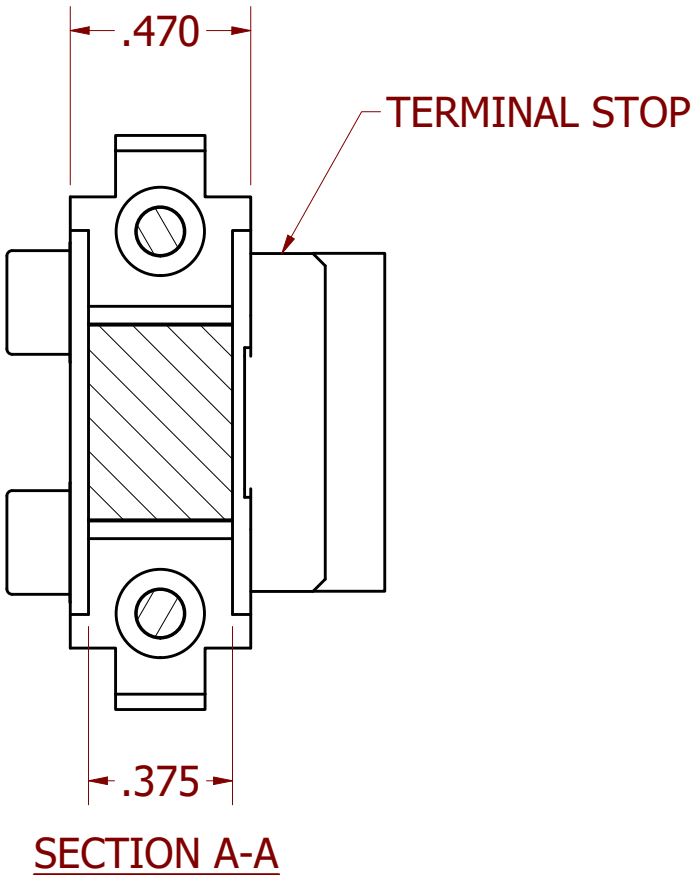
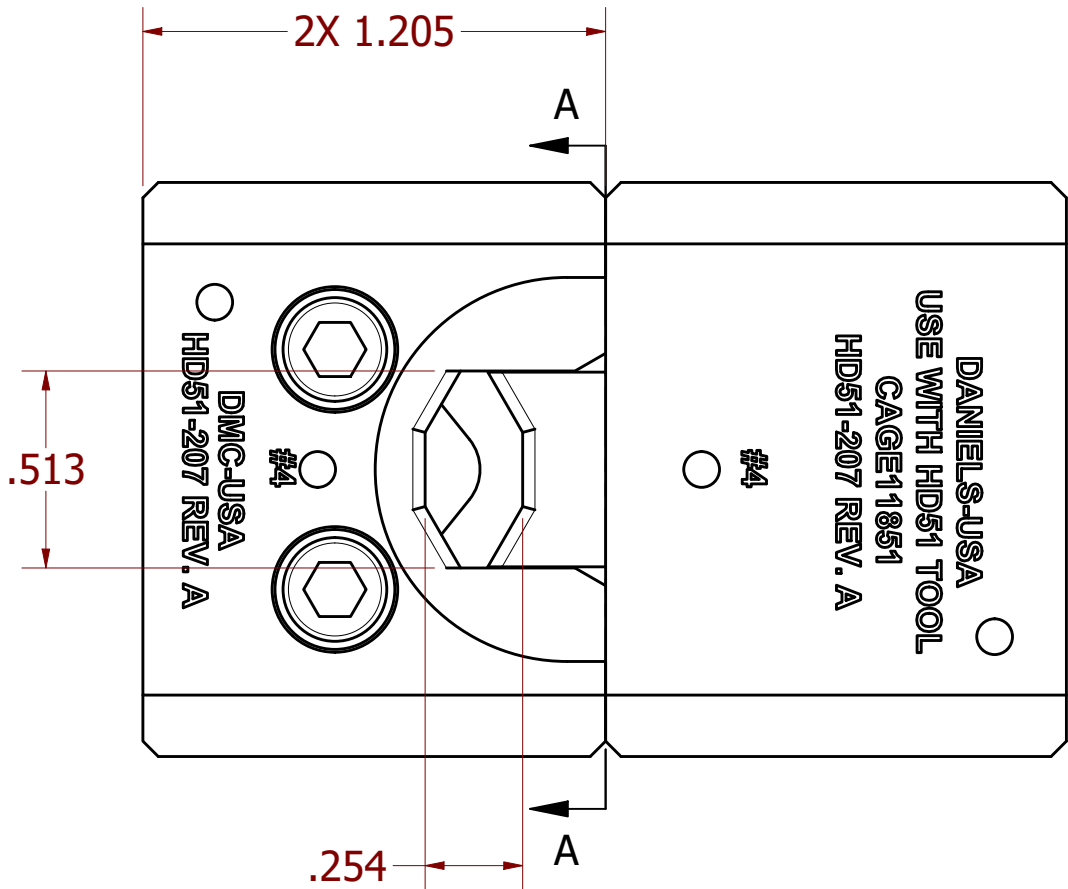


REVISIONS						
REV	ECO NO.	DESCRIPTION	BY	DATE	APP'D BY	DATE
1		ORIGINAL RELEASE	K. KOONS	3/15/2023		




MATING END OF WIRE BARREL GOES AGAINST TERMINAL STOP

**UNCONTROLLED DOCUMENT  
WILL NOT BE UPDATED**  
DIMENSIONS IN INCHES - UNLESS OTHERWISE SPECIFIED

1. TO CRIMP #4 AWG INSULATED COPPER LUGS AND SPLICES.  
NOTES:

**RESTRICTED & CONFIDENTIAL**  
CONFIDENTIAL PROPERTY OF DANIELS MANUFACTURING CORP. NOT TO BE DISCLOSED TO OTHERS. REPRODUCTION OR USED FOR ANY OTHER PURPOSE EXCEPT AS AUTHORIZED IN WRITING BY DANIELS MANUFACTURING. MUST BE RETURNED TO DANIELS MANUFACTURING CORP. ON COMPLETION OF ORDER OR PURPOSES FOR WHICH LENT.

DRN. KIRK C KOONS	DATE 1/13/2023	INTERPRET PER ASME Y14.5M-2018			
CHK'D JC	DATE 1/13/2023	 DANIELS MANUFACTURING CORP. ORLANDO, FLORIDA CAGE 11851			
APP'D JC	DATE 1/13/2023				
NOTE:  THIS DRAWING IS AN OUTLINE DRAWING OF THE RESPECTIVE DMC PART NUMBER INDICATED.		TITLE  DIE, #4 INSULATED Cu ENVELOPE DRAWING			
		WHERE USED:			
		SIZE  B	SCALE  N.T.S.	CAD NO. HD51-207-ENV  PART NO. HD51-207	SHEET 1 OF 1