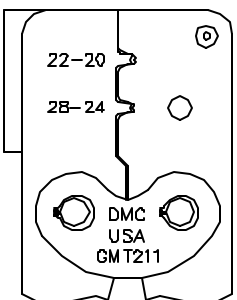
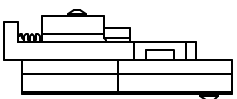
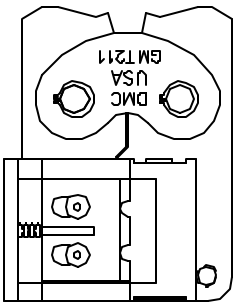
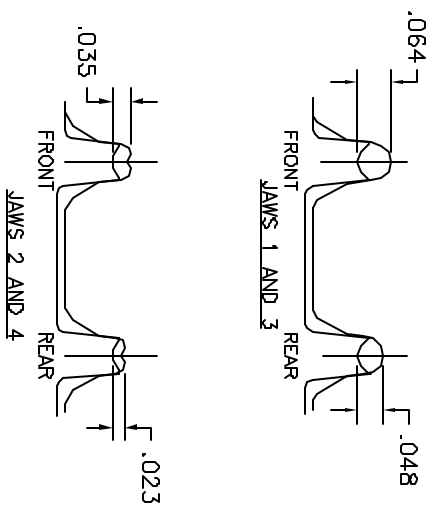
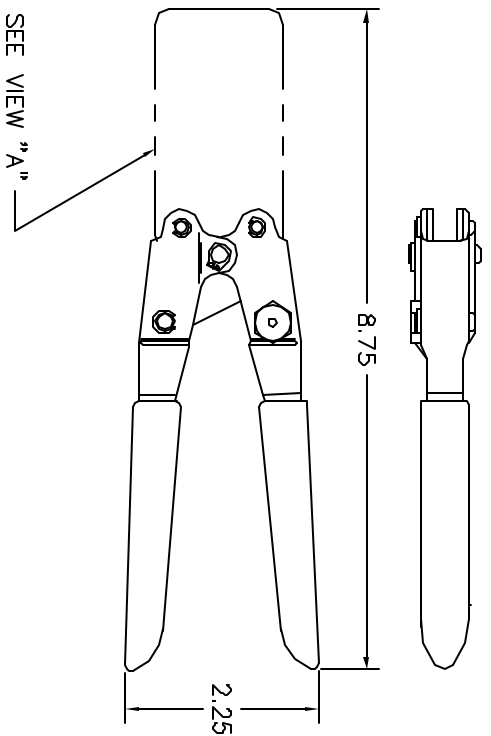


REVISIONS				
REV. NUMBER	E.C.D. NUMBER	DESCRIPTION	BY DATE	APP'D DATE
1		ORIGINAL RELEASE	JMU 9/25/88	RRR 9/25/88



VIEW "A"

**UNCONTROLLED DOCUMENT  
WILL NOT BE UPDATED**

- FOR JAWS 1, 2, 3 & 4, CRIMP  $\phi$ .09,  $\phi$ .05 OR  $\phi$ .03 50/50 SOLID SOLDER AND MEASURE WITH A BLADE MICROMETER.

NOTES:

RESTRICTED & CONFIDENTIAL CONFIDENTIAL PROPERTY OF DANIELS MANUFACTURING CORP. NOT TO BE DISCLOSED TO OTHERS. REPRODUCED OR USED FOR ANY OTHER PURPOSES, EXCEPT AS AUTHORIZED BY DANIELS MANUFACTURING. MUST BE RETURNED TO DANIELS MANUFACTURING CORP. ON COMPLETION OF ORDER OR OTHER PURPOSE FOR WHICH LOANED.		MATERIAL		ITEM		PART NO.		QTY.		DESCRIPTION/REMARKS	
		HEAT TREAT		DRW. L JOYCE CHK'D. RRR		DATE 8/25/88 DATE 8/25/88				DANIELS MANUFACTURING CORP. ORLANDO, FLORIDA CASE 11857	
DO NOT SCALE DRAWING		FINISH		APP'D. DATE		TITLE		WHICH USES		SHEET OF	
						CRIMP TOOL ENVELOPE DRAWING		SAD P/N GMT211-ENV		1 OF 1	
								P/M GMT211-ENV		1 REV.	