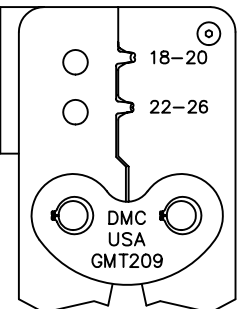
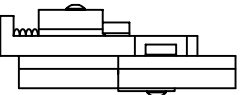
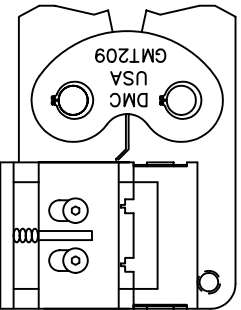
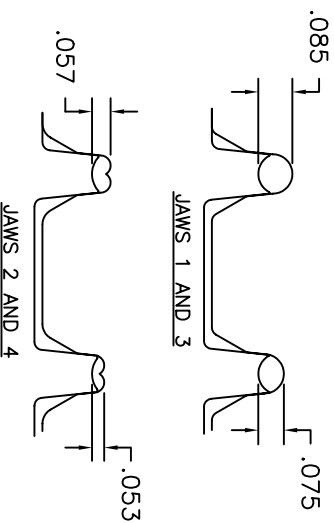
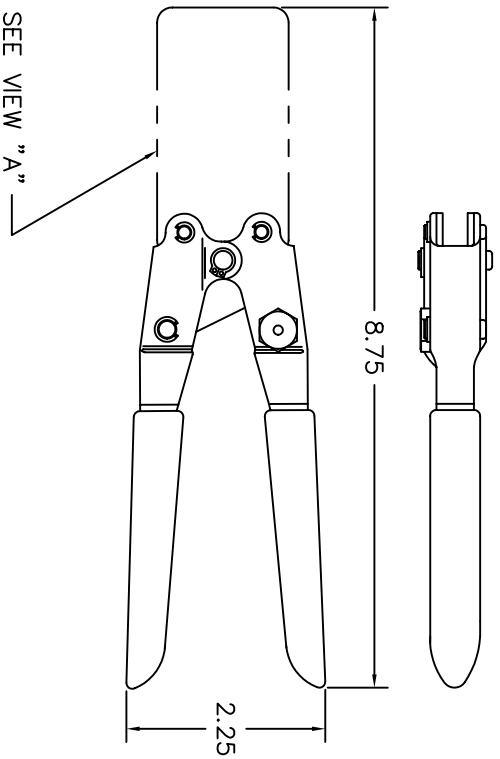


REVISIONS			
REV. SYM.	E.C.O. NUMBER	DESCRIPTION	BY DATE
3		REVISED CRIMP DIM'S	MM DATE 10/29/00 10/29/00



VIEW "A"

**UNCONTROLLED DOCUMENT
WILL NOT BE UPDATED**

- FOR GAGING: SAMPLE CRIMP INSULATION JAWS ON ϕ .093
50/50 SOLID SOLDER: SAMPLE CRIMP CONDUCTOR JAWS
ON ϕ .062 50/50 SOLID SOLDER. MEASURE WITH BLADE
MICROMETER OR VERNIER.

NOTES:

RESTRICTED & CONFIDENTIAL		MATERIAL		PART NO.		DESCRIPTION/REMARKS	
CONFIDENTIAL PROPERTY OF DANIELS MANUFACTURING CORP. REPRODUCED OR USED FOR ANY OTHER PURPOSE, EXCEPT AS AUTHORIZED IN WRITING, BY DANIELS MANUFACTURING, MUST BE RETURNED TO DANIELS MANUFACTURING CORP. ON COMPLETION OF ORDER OR OTHER PURPOSE FOR WHICH LENT.		DRG.	LME	DATE	DATE	DMC DANIELS MANUFACTURING CORP. ORLANDO, FLORIDA CAGE 11851	
		CHK'D.	MGS	DATE	DATE		
		APP'D.	DIR	DATE	DATE		
FINISH		HEAT TREAT		TITLE CRIMP TOOL ENVELOPE DRAWING		WHERE USED: SIZE SCALE B NTS POSTING	
DO NOT SCALE DRAWING		NOTE: THIS DRAWING IS AN OUTLINE DRAWING OF THE RESPECTIVE DMC PART NUMBER INDICATED. ACTUAL DMC PART NUMBER WITHOUT THE "ENV" SUFFIX.		CAD P/N GMT209-ENV		SHEET OF 1 1	
				DMC NO. GMT209-ENV		REV. OF 3 1	