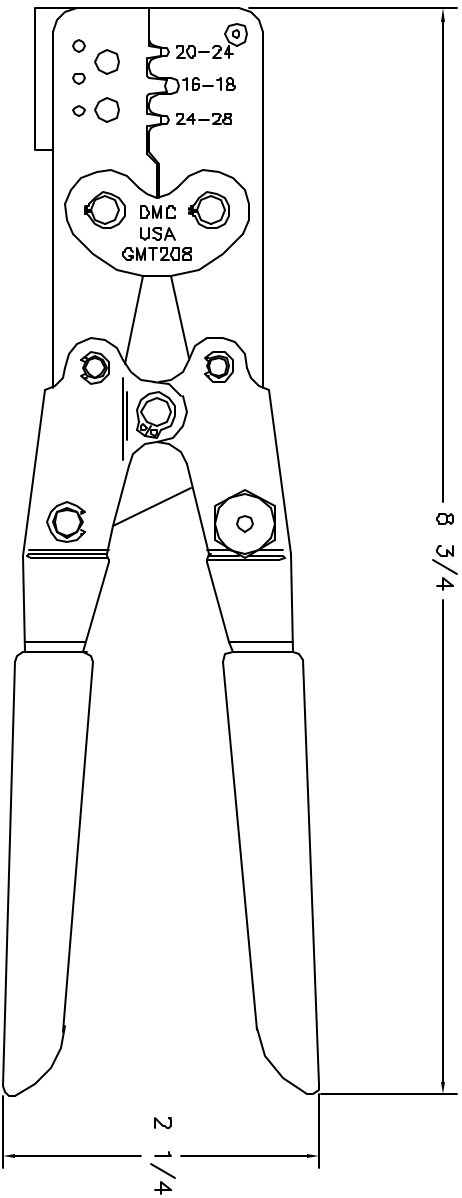


**UNCONTROLLED DOCUMENT  
WILL NOT BE UPDATED**



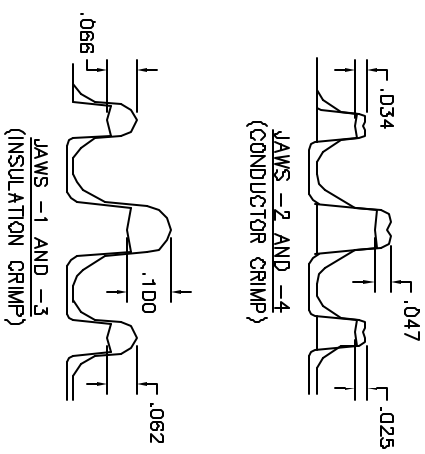
2. TOLERANCES ON ALL CRIMP HEIGHTS ±.005.
1. FOR GAGING: SAMPLE CRIMP INSULATION JAWS ON Ø.093 50/50 SOLID SOLDER; SAMPLE CRIMP CONDUCTOR JAWS ON Ø.062 50/50 SOLID SOLDER. MEASURE WITH BLADE MICROMETER OR VERNIER.

NOTES:

RESTRICTED & CONFIDENTIAL

CONFIDENTIAL PROPERTY OF DANIELS MANUFACTURING CORP. NOT TO BE DISCLOSED TO OTHERS, REPRODUCED OR USED FOR ANY OTHER PURPOSE, EXCEPT AS AUTHORIZED IN WRITING BY DANIELS MANUFACTURING CORP. ON COMPLETION OF ORDER OR OTHER PURPOSE FOR WHICH LENT.

REV. STA.	E.C.D. NUMBER	DESCRIPTION	BY DATE	APP'D. DATE
2		ADDED NOTE 2	JML 4/28/88	RRR 4/28/88



ITEM	PART NO.	QTY.	DESCRIPTION/REMARKS
DRM. DH	DATE 3/22/88		
CHK'D. TS	DATE 3/22/88		
APP'D. AAM	DATE 3/22/88		
APP'D.	DATE		
TITLE: CRIMP TOOL ENVELOPE DRAWING (AMP 90277 / 90066)			
WHERE USED:			
SIZE	SCALE	DWG P/N	SHEET OF
B	NTS	GMT208-ENV	1 1
POSTING		P/N GMT208-ENV	REV. 2