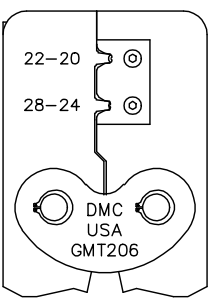
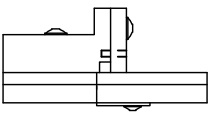
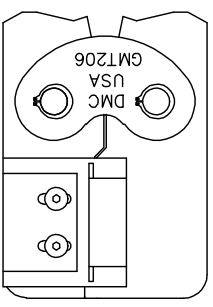
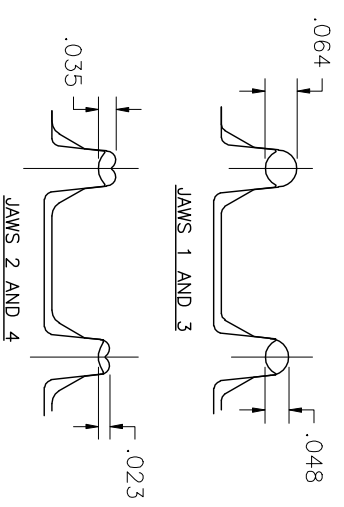
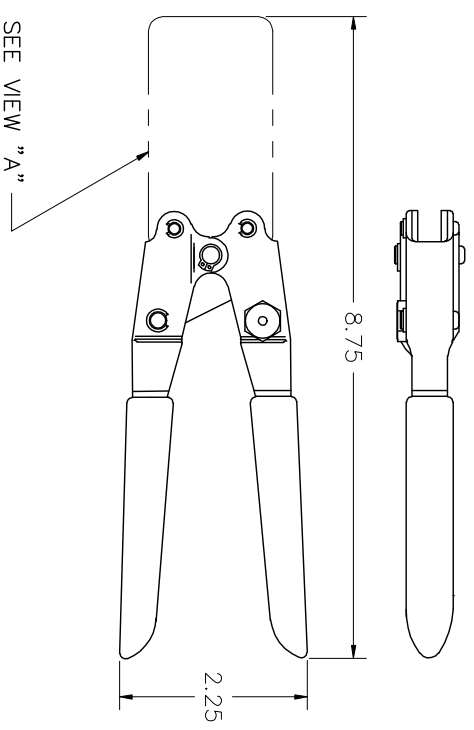


REVISIONS				
REV. STYL. NUMBER	E.C.O. NUMBER	DESCRIPTION	BY DATE	APP'D DATE
3		REVISED NOTES 1 & 2	JMU 2/22/07	RRR 2/22/07



VIEW "A"

**UNCONTROLLED DOCUMENT  
WILL NOT BE UPDATED**

- FOR JAWS 2, 3 & 4, CRIMP  $\phi$ .062 50/50 SOLDER AND MEASURE WITH A BLADE MICROMETER.
- FOR JAW 1, CRIMP  $\phi$ .093 50/50 SOLDER AND MEASURE WITH A BLADE MICROMETER.

NOTES:

RESTRICTED & CONFIDENTIAL CONFIDENTIAL PROPERTY OF DANIELS MANUFACTURING CORP. NOT TO BE DISCLOSED TO OTHERS. REPRODUCED OR TRANSMITTED IN ANY FORM OR BY ANY MEANS, WITHOUT PERMISSION IN WRITING BY DANIELS MANUFACTURING. MUST BE RETURNED TO DANIELS MANUFACTURING CORP. ON COMPLETION OF ORDER OR OTHER PURPOSE FOR WHICH SENT.		MATERIAL		FINISH		DO NOT SCALE DRAWING	
ITEM	PART NO.	QTY.	DESCRIPTION/REMARKS	HEAT TREAT	FINISH		
DRN. J. JOYCE	DATE 1/8/00		DANIELS MANUFACTURING CORP. ORLANDO, FLORIDA CAGE 11851				
CHK'D. RRR	DATE 1/8/00						
APP'D.	DATE						
APP'D.	DATE						
NOTE: THIS DRAWING IS AN OUTLINE DRAWING OF THE RESPECTIVE DMC PART NUMBER AND PART NUMBER IS DRAWING NUMBER WITHOUT THE "-ENV" SUFFIX.				WHERE USED: SCALE SIZE B SCALE NTS SHEET 1 OF 1			
TITLE CRIMP TOOL ENVELOPE DRAWING				CAD P/N GMT206-ENV Dwg. NO. GMT206-ENV			
				REV. 3			