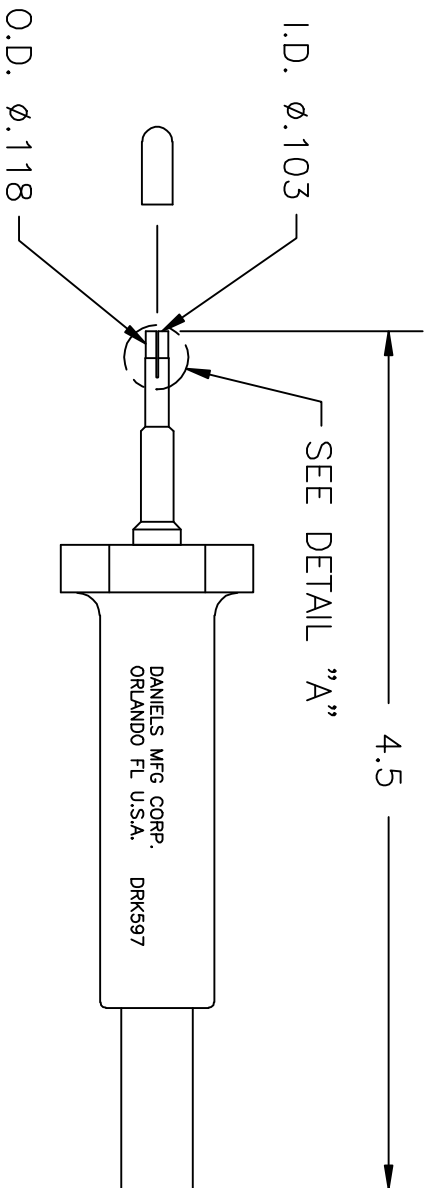
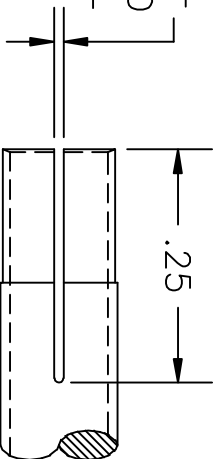


UNCONTROLLED DOCUMENT WILL NOT BE UPDATED

REV. SYM.		E.C.O. NUMBER	DESCRIPTION	BY DATE	APP'D DATE
2			ADDED DETAIL "A"	JWJ 6/1/99	RRR 6/1/99
3		21484	"COMPARABLE TO" WAS "EQUIVALENT"	KDH 11/06/09	RRR 11/06/09



2X .010 SLOT
EQUALLY SPACED
ORIENTATION OPTIONAL



DETAIL "A"

- NOTES:
1. COMPARABLE TO HUGHES TMC16RT008.

RESTRICTED & CONFIDENTIAL

CONFIDENTIAL PROPERTY OF DANIELS MANUFACTURING CORP. NOT TO BE DISCLOSED TO OTHERS, REPRODUCED OR USED FOR ANY OTHER PURPOSE, EXCEPT AS AUTHORIZED IN WRITING BY DANIELS MANUFACTURING. MUST BE RETURNED TO DANIELS MANUFACTURING CORP. ON COMPLETION OF ORDER OR OTHER PURPOSE FOR WHICH LENT.

MATERIAL		ITEM	PART NO.	DATE	QTY.	DESCRIPTION/REMARKS
FINISH		DRN. J. JOYCE		4/20/99		
HEAT TREAT		CHK'D. RRR		4/20/99		
		APP'D.		DATE		
		APP'D.		DATE		
<p>NOTE: THIS DRAWING IS AN OUTLINE DRAWING OF THE RESPECTIVE DMC PART NUMBER INDICATED. ACTUAL DMC PART NUMBER IS DRAWING NUMBER WITHOUT THE "-ENV" SUFFIX.</p> <p>WHERE USED:</p> <p>DMC DANIELS MANUFACTURING CORP. ORLANDO, FLORIDA CAGE 11851</p> <p>TITLE: REMOVAL TOOL ENVELOPE DRAWING</p>						
DO NOT SCALE DRAWING		SIZE A	SCALE FULL	CAD P/N DRK597-ENV	SHEET 1	OF 1
		POSTING		DWG. NO. DRK597-ENV	REV. 3	