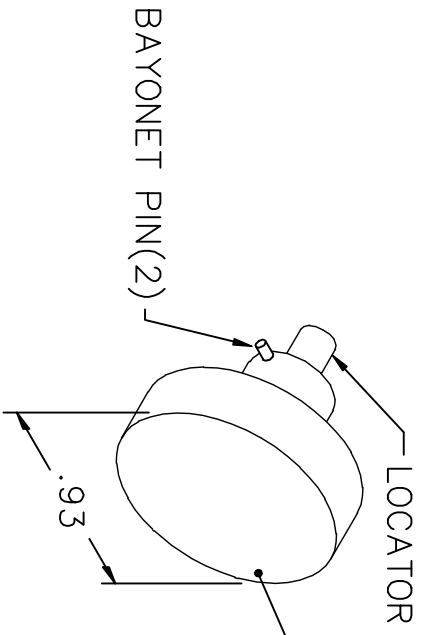
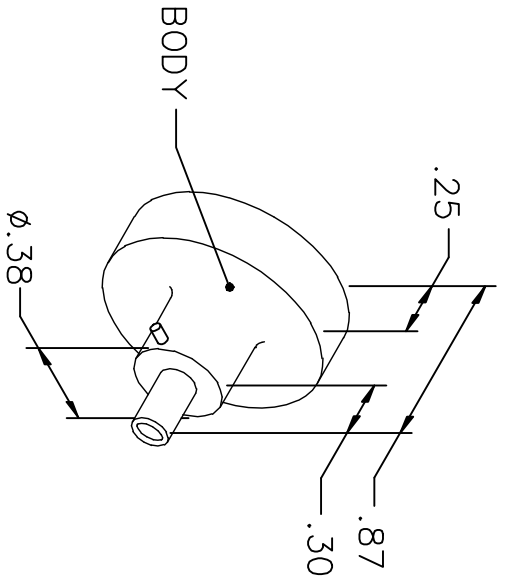
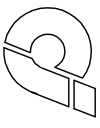


REVISIONS				
REV. SYM.	E.C.O. NUMBER	DESCRIPTION	BY DATE	APP'D DATE
2		REVISED & UPDATED	ED 6-30-94	PD 6-30-94





Jupiter

PART NO.: JBX 2 OUT LP09

WIRE SIZE	20	22	24
POS.	6	5	4

USE WITH CONTACT NO:
JBX 2 CT MCO9
ø0.9mm PIN, SIZE 2

NOTE: FOR USE WITH DANIELS CRIMP TOOLS
ACCOMMODATING "86" SERIES POSITIONERS

LOCATOR	
HOLE DIMENSIONS	ADDITIONAL FEATURES
∅.038 ∓.504	└┘ ∅.093 ∓.30

RESTRICTED & CONFIDENTIAL

CONFIDENTIAL PROPERTY OF DANIELS MANUFACTURING CORP. NOT TO BE DISCLOSED TO OTHERS, REPRODUCED OR USED FOR ANY OTHER PURPOSE, EXCEPT AS AUTHORIZED IN WRITING BY DANIELS MANUFACTURING. MUST BE RETURNED TO DANIELS MANUFACTURING CORP. ON COMPLETION OF ORDER OR OTHER PURPOSE FOR WHICH LENT.

DRN. ED		DATE 6-30-94		NOTE: THIS DRAWING IS AN OUTLINE DRAWING OF THE RESPECTIVE DMC PART NUMBER INDICATED. ACTUAL DMC PART NUMBER IS DRAWING NUMBER WITHOUT THE "-ENV" SUFFIX.	WHERE USED: MH860 SIZE SCALE A NTS POSTING	CAD P/N 86-204-ENV	SHEET 1 OF 1	REV. 2
CHK'D. PD		DATE 6-30-94						
APP'D.		DATE						
TITLE ENVELOPE DRAWING POSITIONER								
DMC DANIELS MANUFACTURING CORP. ORLANDO, FLORIDA CAGE 11851								
DO NOT SCALE DRAWING								