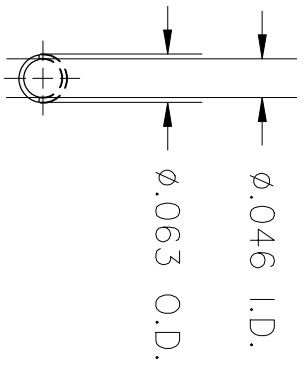
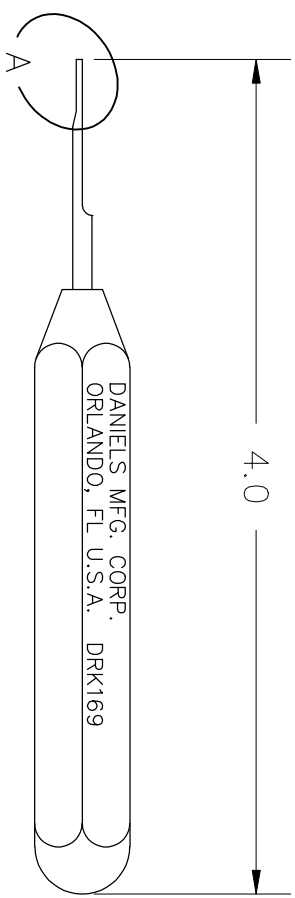


REVISIONS				
REV. SYM.	E.C.O. NUMBER	DESCRIPTION	BY DATE	APP'D DATE
1		ORIGINAL RELEASE	LME 7/22/86	TR 7/28/86



VIEW A



UNCONTROLLED DOCUMENT
WILL NOT BE UPDATED

RESTRICTED & CONFIDENTIAL CONFIDENTIAL PROPERTY OF DANIELS MANUFACTURING CORP. NOT TO BE DISCLOSED TO OTHERS, REPRODUCED OR USED FOR ANY OTHER PURPOSE, EXCEPT AS AUTHORIZED IN WRITING BY DANIELS MANUFACTURING. MUST BE RETURNED TO DANIELS MANUFACTURING CORP. ON COMPLETION OF ORDER OR OTHER PURPOSE FOR WHICH LENT.		MATERIAL		ITEM		PART NO.		QTY.		DESCRIPTION/REMARKS	
		HEAT TREAT		DRN.	LME	DATE	7/22/86	CHK'D.	MGS	DATE	7/28/86
FINISH		APP'D.	TR	DATE	7/28/86	APP'D.	WUP	DATE	7/28/86	TITLE	
				NOTE:		REMOVAL TOOL		WHERE USED:		ENVELOPE DRAWING	

DO NOT SCALE DRAWING				THIS DRAWING IS AN OUTLINE DRAWING OF THE RESPECTIVE DMC PART NUMBER INDICATED. ACTUAL DMC PART NUMBER IS DRAWING NUMBER WITHOUT THE "-ENV" SUFFIX.				CAD P/N		SHEET OF	
				POSTING		DRK169-ENV		DWG. NO.		1 1	
				DRK169-ENV		DRK169-ENV		DRK169-ENV		1 1	