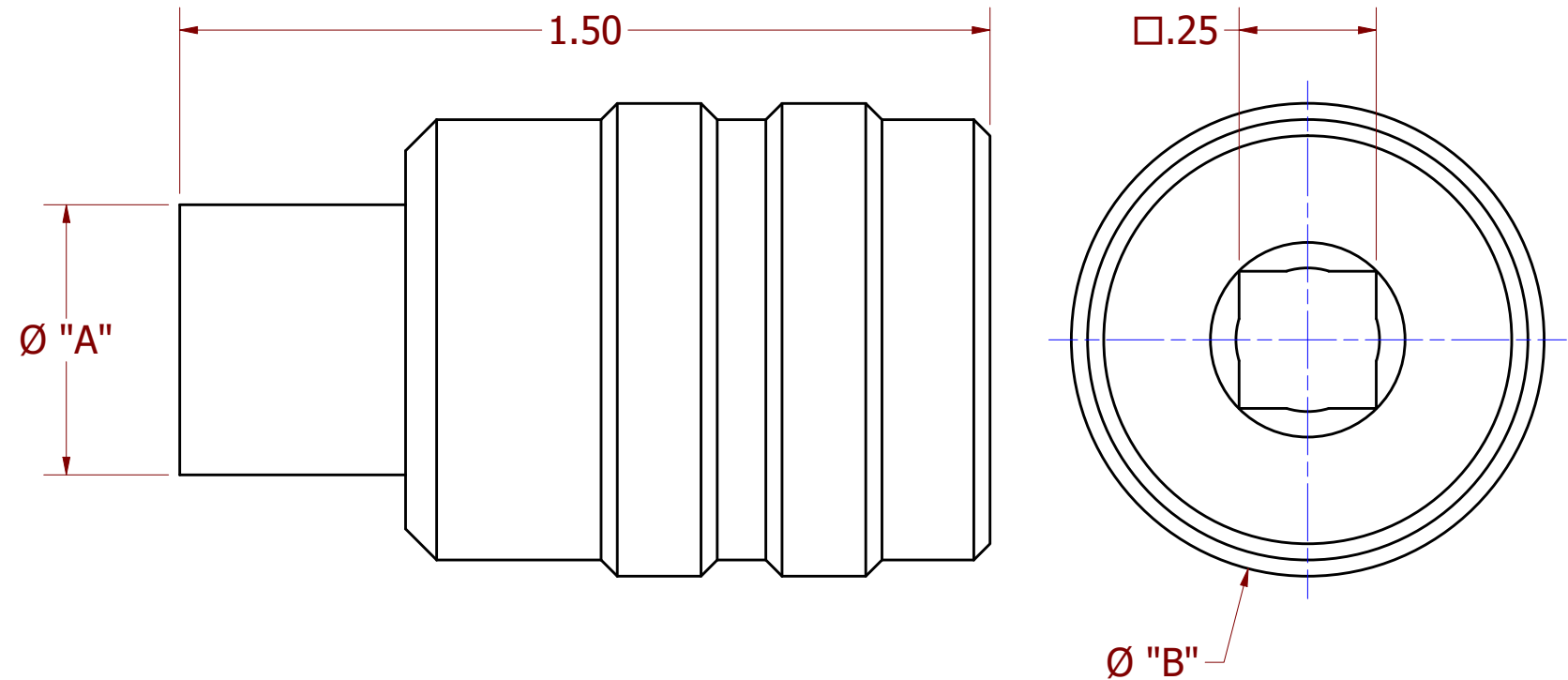


PART NUMBER	DIM "A"	DIM "B"	KEYING
CM801-05**	.28	.88	ALL
CM801-06**	.35	.88	ALL
CM801-07**	.40	.88	ALL
CM801-08**	.47	.88	ALL
CM801-09**	.53	.88	ALL
CM801-10**	.61	.88	ALL
CM801-13**	.77	1.00	ALL
CM801-16**	.98	1.25	ALL
CM801-17**	1.04	1.25	ALL
CM801-21**	1.29	1.50	ALL
CM801R-05**	.26	.88	ALL
CM801R-06**	.30	.88	ALL
CM801R-07**	.37	.88	ALL
CM801R-08**	.43	.88	ALL
CM801R-09**	.49	.88	ALL
CM801R-10**	.55	.88	ALL
CM801R-13**	.71	.88	ALL
CM801R-16**	.90	1.25	ALL
CM801R-17**	.94	1.25	ALL
CM801R-21**	1.17	1.44	ALL

REVISIONS						
REV	ECO NO.	DESCRIPTION	BY	DATE	APP'D BY	DATE
1		INITIAL RELEASE	DPH	11/2/2020		
2		ADDED NOTES 1 & 2	CJY	4/17/2026	K. KOONS	4/17/2026



** DENOTES PART NUMBER SUFFIX:

- AA = KEYING A
- BB = KEYING B
- CC = KEYING C
- DD = KEYING D
- EE = KEYING E
- FF = KEYING F

EXAMPLE PART NUMBER: CM801-08BB

1. ADAPTER TOOLS MADE TO FIT AMPHENOL 2M801 SERIES CONNECTORS.


* INDICATES THAT ADAPTER TOOLS WILL ALSO FIT GLENAIR 801 "MIGHTY MOUSE SERIES CONNECTORS.

NOTES:

**UNCONTROLLED DOCUMENT
WILL NOT BE UPDATED**

DIMENSIONS IN INCHES - UNLESS OTHERWISE SPECIFIED
RESTRICTED & CONFIDENTIAL

CONFIDENTIAL PROPERTY OF DANIELS MANUFACTURING CORP. NOT TO BE DISCLOSED TO OTHERS. REPRODUCTION OR USED FOR ANY OTHER PURPOSE EXCEPT AS AUTHORIZED IN WRITING BY DANIELS MANUFACTURING. MUST BE RETURNED TO DANIELS MANUFACTURING CORP. ON COMPLETION OF ORDER OR PURPOSES FOR WHICH LENT.

DRN. DANIEL HENDESS	DATE 11/2/2020	INTERPRET PER ASME Y14.5M-2018			
CHK'D K. KOONS	DATE 11/2/2020	 DANIELS MANUFACTURING CORP. ORLANDO, FLORIDA CAGE 11851			
APP'D T. KUHL	DATE 4/17/2026				
NOTE: THIS DRAWING IS AN OUTLINE DRAWING OF THE RESPECTIVE DMC PART NUMBER INDICATED.		TITLE: SERIES 2M801/801 ADAPTOR TOOLS ENVELOPE DRAWING WHERE USED:			
SIZE B	SCALE N.T.S.	CAD NO. CM801_ENV	SHEET 1 OF 1	REV. 2	
		PART NO. CM801			